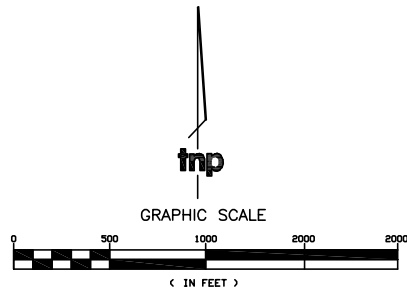
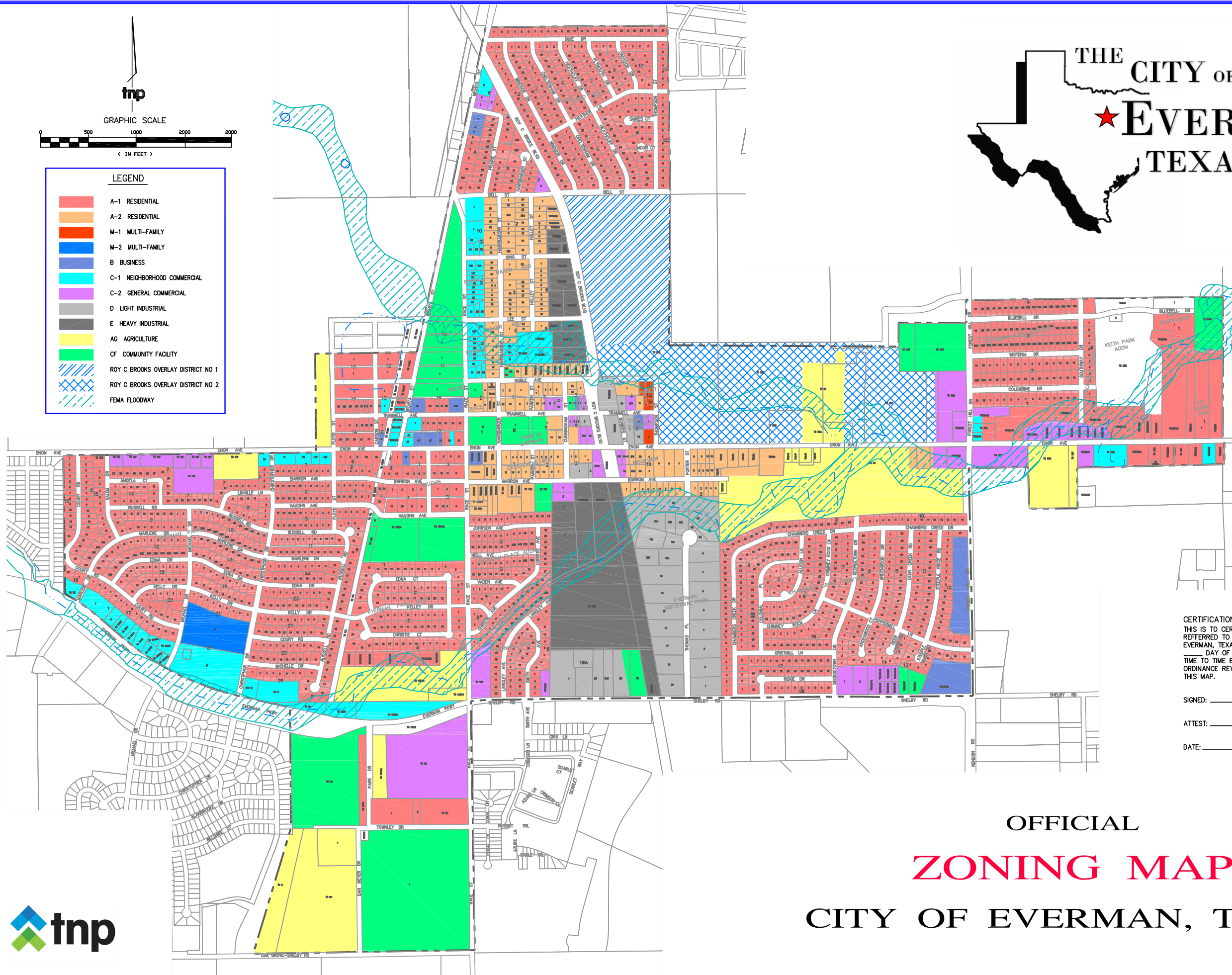


THE CITY OF
EVERMAN
 TEXAS



LEGEND

	A-1 RESIDENTIAL
	A-2 RESIDENTIAL
	M-1 MULTI-FAMILY
	M-2 MULTI-FAMILY
	B BUSINESS
	C-1 NEIGHBORHOOD COMMERCIAL
	C-2 GENERAL COMMERCIAL
	D LIGHT INDUSTRIAL
	E HEAVY INDUSTRIAL
	AG AGRICULTURE
	CF COMMUNITY FACILITY
	ROY C BROOKS OVERLAY DISTRICT NO 1
	ROY C BROOKS OVERLAY DISTRICT NO 2
	FEMA FLOODWAY



CERTIFICATION:
 THIS IS TO CERTIFY THAT THIS IS THE OFFICIAL ZONING DISTRICT MAP REFERRED TO IN ZONING ORDINANCE NO. 433, OF THE CITY OF EVERMAN, TEXAS, AS ADOPTED BY THE CITY COUNCIL ON THE _____ DAY OF _____, 20____, AND AS MAY BE AMENDED FROM TIME TO TIME BY THE CITY COUNCIL ACTION, AS INDICATED BY ORDINANCE REVISION NUMBERS AND DATES SHOWN ELSEWHERE ON THIS MAP.

SIGNED: _____

ATTEST: _____

DATE: _____

OFFICIAL
ZONING MAP
 CITY OF EVERMAN, TEXAS

