

Phase II MS4 Annual Report

For



Stormwater Management Program
Year 4
(January 1, 2022 – December 31, 2022)
Permit Authorization Number: TXR040103

Prepared For



Texas Commission on Environmental Quality

July 2023

Prepared By



5237 N. Riverside Drive, Suite 100
Fort Worth, TX 76137
(817) 336-5773

TNP PROJECT # EVR 22142



Phase II MS4 Annual Report Form TPDES General Permit Number TXR040000

A. General Information

Authorization Number: TXR040103

Reporting Year: Year 4

Annual Report Year: Calendar Year

Beginning and End Dates: January 1, 2022 – December 31, 2022

MS4 Operator Level: Level 1

Name of MS4/Permittee: City of Everman MS4

Contact Name: Mr. Gilberto Ramirez, Director of Public Works

Telephone Number: 817-293-0525

Mailing Address: 213 North Race Street
Everman, TX 76140

Email Address: gramirez@evermantx.net

A copy of the annual report was submitted to the TCEQ Region.

Yes

No

Region the annual report was submitted to: TCEQ Region 4.

B. Status of Compliance with the MS4 GP and SWMP (Part IV Section B.2(a))

1. Provide information on the status of complying with permit conditions: (TXR040000 Part IV.b.2)

	Yes	No	Explain
Permittee is currently in compliance with the SWMP as submitted to and approved by the TCEQ.	<input type="checkbox"/>	<input checked="" type="checkbox"/>	Progress has been made towards meeting the goal.
Permittee is currently in compliance with recordkeeping and reporting requirements.	<input type="checkbox"/>	<input checked="" type="checkbox"/>	Report is being submitted for Year 4 2022.
Permittee meets the eligibility requirements of the permit (e.g., TMDL requirements, Edward Aquifer limitations, compliance history, etc.).	<input type="checkbox"/>	<input checked="" type="checkbox"/>	Everman meets the eligibility requirements of the permit.
Permittee conducted an annual review of its SWMP in conjunction with preparation of the annual report.	<input checked="" type="checkbox"/>	<input type="checkbox"/>	Everman conducted an annual review of the City's SWMP.



Phase II MS4 Annual Report Form

TPDES General Permit Number TXR040000

2. Provide a general assessment of the appropriateness of the selected BMPs. Use table below or attach a summary, as appropriate:

MCM	BMP	BMP is appropriate for reducing the discharge of pollutants in stormwater (yes or no). Explain.
1	Educational Brochures	Yes, educating the public about stormwater is an important part of reducing pollution that enters into stormwater runoff.
1	Park Cleanup	Yes, cleaning up litter, and educating residents about stormwater pollution reduces the amount of pollutants that may enter into storm drains.
1	Pet Waste Management	Yes, by teaching residents to pick up after their pets, the amount of bacteria entering local waterways can be decreased
1	Storm Drain Marking	Yes, a marker on the storm drains will remind residents that storm drains discharge directly to creeks and streams. This can prevent and may prevent dumping and discharge of pollutants into the storm drain.
1	Youth Education	Yes, educating children about stormwater pollution increases awareness and reinforces what can be done to reduce it.
1	Stormwater Education	Yes, it is important to educate residents about the importance of the program.
1	SWMP Annual Review	Yes, it is important to review the program annually to ensure the program is clear, specific, and measurable.
2	Illicit Discharge Ordinance	Yes, regulating and enforcing illicit discharges is important in reducing pollution.
2	Storm Drainage Outfall Map	Yes, being able to easily identify the source of illicit discharges is vital to protecting stormwater quality.
2	Education & Training on Illicit Discharges	Yes, educating the City staff on identifying and taking corrective actions can eliminate future illicit discharges.
2	Public Reporting and Response Procedures	Yes, enabling citizens to report illicit discharges is very important for the City to locate and address the discharges in a timely manner.
2	Source Investigation & Elimination	Yes, determining the source of an illicit discharge is important in order to begin corrective actions and eliminate future discharges.



Phase II MS4 Annual Report Form

TPDES General Permit Number TXR040000

MCM	BMP	BMP is appropriate for reducing the discharge of pollutants in stormwater (yes or no). Explain.
3	Erosion and Sediment Control Ordinance	Yes, by allowing the City to enforce erosion and sediment control on construction sites, pollutants from stormwater runoff are reduced.
3	Construction Plan Review Procedures	Yes, by ensuring that construction sites are enacting appropriate erosion and sediment control BMPs.
3	Construction Site Inspections & Enforcement	Yes, performing the site inspections will ensure proper installation and maintenance of erosion and sediment controls and reduce transport of sediment load.
3	Construction Stormwater Training	Yes, stormwater pollution can be reduced by properly training staff to identify, report, and correct improper erosion control practices on construction sites.
4	Post-Construction Ordinance	Yes, allows the City to enforce post-construction and long term maintenance requirements, reducing the amount of pollution that might enter the storm drain from runoff.
4	Long-Term Maintenance of Post-Construction BMPs	Yes, developing long-term operation and maintenance requirements ensures that post-construction BMPs will be maintained according to the City's criteria.
5	Facility & Stormwater Control Inventory	Yes, maintaining an inventory of City-owned facilities and stormwater controls identifies facilities and controls of concern in order to establish pollution prevention measures and sources of pollution.
5	Municipal Employee Training Program	Yes, by training employees to identify, and properly record, and respond to any illicit discharges or illegal dumping around the city, stormwater pollution may be reduced.
5	Contractor Requirements & Oversight	Yes, developing contractual requirements will ensure that contractors are using appropriate control measures and standard operating procedures when working within the MS4.
5	Municipal Operation & Maintenance Activities	Yes, performing the assessment identifies possible pollutants and solutions to prevent pollution.



Phase II MS4 Annual Report Form TPDES General Permit Number TXR040000

3. Describe progress towards reducing the discharge of pollutants to the maximum extent practicable. Summarize any information used (such as visual observation, amount of materials removed or prevented from entering the MS4, or if required monitoring data, etc.) to evaluate reductions in the discharge of pollutants. Use a table or attach a narrative description as appropriate.

MCM	BMP	Information Used	Quantity	Units	Does BMP Demonstrate a Direct Reduction in Pollutants? (yes or no, explain)
1	Educational Brochures	City Event	0	Event	Yes, educating the public about stormwater pollution is an important part of the stormwater program.
1	Park Cleanup	Cleanup Event	0	Event	Yes, picking up litter is a direct reduction of pollutants
1	Pet Waste Management	City Event	0	Event	Yes, educating the public about stormwater pollution is necessary for a successful program.
1	Storm Drain Marking	Inlets Inspected	33	Inlets	Yes, by marking storm drains, it could deter residents/commercial businesses from putting waste down the storm drain, which leads to less pollution in the waterways.
1	Youth Education	Number of Educational Material Distributed	0	Educational Brochures	Yes, educating the youth on stormwater pollution is an important part of the stormwater program.
1	SWMP Annual Review	BMPs Reviewed	21	BMPs	Yes, reviewing the program and BMPs annually ensures the program is compliant with TPDES permit.
2	Illicit Discharge Ordinance	Number of Violations	0	Violations	Yes, the City needs to be able to enforce the ordinance to deter the public from putting pollutants in waterways.
2	Storm Drainage Outfall Map	Outfalls Mapped	100%	Outfalls	Yes, the BMP allows staff to easily track and respond to illicit discharges.
2	Education & Training on Illicit Discharges	Number of Training Attendees	0	Attendee	Yes, providing educational information allows the staff to identify and take corrective actions on illicit discharges.



Phase II MS4 Annual Report Form

TPDES General Permit Number TXR040000

MCM	BMP	Information Used	Quantity	Units	Does BMP Demonstrate a Direct Reduction in Pollutants? (yes or no, explain)
2	Public Reporting and Response Procedures	Number of Illicit Discharge Inspection	0	Illicit Discharge Inspection	Yes, public reporting allows the City to have a quicker response to any illicit discharges.
2	Source Investigation & Elimination	Number of Violations	0	Violations	Yes, it is important that the City follows proper procedures for addressing the source of an illicit discharge to prevent any future illicit discharges.
3	Erosion and Sediment Control Ordinance	Number of Construction Sites	0	Construction Inspections	Yes, placing requirements on construction sites reduces the amount of pollution in the storm drains from site runoff.
3	Construction Plan Review Procedures	Number of Construction Plans Reviewed	1	Construction Plans	Yes, it is important the City have proper review procedures to ensure that construction sites are enacting appropriate pollutant reducing BMPs.
3	Construction Site Inspections & Enforcement	Number of Construction Sites	5	Construction Inspections	Yes, it is important for the City to have proper inspection procedures to ensure the construction sites are complying the City's Erosion and Sediment Control Ordinance.
3	Construction Stormwater Training	Number of Training Attendees	0	Attendee	Yes, it is important that inspectors be trained such that they can identify and correct improper erosion control practices and prevent stormwater pollution from construction sites.
4	Post-Construction Ordinance	Number of Post-Construction Inspections	0	Post-Construction Inspections	Yes, requiring developers to install post-construction runoff control measures reduces the amount of pollution from the site long term
4	Long-Term Maintenance of Post-Construction BMPs	Number of Maintenance Plan Implemented	0	Maintenance Plans	Yes, developing long-term operation and maintenance requirements ensures post-construction BMPs will be maintained according to the City's criteria.



Phase II MS4 Annual Report Form

TPDES General Permit Number TXR040000

MCM	BMP	Information Used	Quantity	Units	Does BMP Demonstrate a Direct Reduction in Pollutants? (yes or no, explain)
5	Facility and Stormwater Control Inventory	Facilities & Stormwater Controls	12	Controls	Yes, it is important to identify City-owned facilities and stormwater controls in order to establish pollution prevention measures and sources of pollution.
5	Municipal Employee Training Program	Number of Training Attendees	0	Attendee	Yes, training the employees is important so that stormwater pollution may be prevented or reduced.
5	Contractor Requirements & Oversight	Number of Contractual Requirements	0	Contractual Requirements	Yes, implementing contractual requirements and oversight ensures that MS4-hired contractors are accountable to the MS4'd pollution reduction goals.
5	Municipal Operations & Maintenance Activities	Number of Inspections	0	Inspections	Yes, performing the assessment on municipal operations and maintenance activities identifies possible pollutants and will help develop standard operating procedures to reduce and minimize pollutant discharges.



Phase II MS4 Annual Report Form TPDES General Permit Number TXR040000

4. Provide the measurable goals for each of the MCMs, and an evaluation of the success of the implementation of the measurable goals.

MCM	Measurable Goal	Success
1	Provide brochures to the public at City facilities. Distribute brochures to at least one City event each year.	Partially Met Goal – The City provides brochures to the public at City facilities. However, the City has not distributed stormwater information at City events.
1	Advertise the cleanup at least once on the City's website.	Did Not Meet Goal – The City did not advertise a cleanup event this year.
1	Coordinate at least once annual cleanup event.	Did Not Meet Goal – The City did coordinate an annual cleanup event.
1	Provide educational material about pet waste at 1 City event annually.	Did Not Meet Goal – The City did not provide educational material about pet waste at an annual City event.
1	Annually inspect 20% of marked inlets. Perform any maintenance.	Did Not Meet Goal – The City did not conduct inspection of 20% of the marked inlets.
1	Distribute educational material to local schools.	Did Not Meet Goal – The City did not provide educational material to local schools.
1	Post SWMP on City's website no later than 30 days after the approval date.	Will post on website once SWMP is approved.
1	Post annual report on City's website no later than 30 days after the due date.	Met Goal – The City has posted Year 1 and 2 annual reports on the City's website.
1	Annually review SWMP to ensure compliance.	Met Goal – The City reviewed the program and deemed no changes necessary.
2	Conduct 100% of illicit discharge inspections.	Did Not Meet Goal – The City did not conduct 100% of illicit discharge inspections.
2	Investigate 100% of illicit discharges reported.	Did Not Meet Goal – The City did not investigate 100% of illicit discharges reported.
2	Annually update the storm drainage system maps as necessary.	Met Goal – 100% of the outfalls have been mapped.
2	Provide annual IDDE training at least once a year for designated City staff and new hires.	Did Not Meet Goal – Annual IDDE training was not conducted for designated City staff and new hires.
2	Investigate 100% of illicit discharges reported.	Did Not Meet Goal – The City did not investigate 100% of illicit discharges reported.
2	Conduct 100% of illicit discharge inspections.	Did Not Meet Goal – The City did not conduct 100% of illicit discharge inspections.



Phase II MS4 Annual Report Form

TPDES General Permit Number TXR040000

MCM	Measurable Goal	Success
2	Investigate 100% of illicit discharges reported.	Did Not Meet Goal – The City did not investigate 100% of illicit discharges reported.
3	Inspect 100% of construction sites each year.	Did Not Meet Goal – The City did not conduct construction inspections.
3	Inspect 100% of complaints driven site each year.	Did Not Meet Goal – The City did not investigate 100% of construction complaints.
3	Administer the construction plan review process for 100% of new regulated construction projects.	Met Goal – The City engineer administered construction plan review for 1 new regulated construction projects.
3	Inspect 100% of construction sites each year.	Did Not Meet Goal – The City did not conduct construction inspections.
3	Inspect 100% of complaint driven site each year.	Did Not Meet Goal – The City did not investigate 100% of construction complaints.
3	Conduct annual construction stormwater training at least once a year for designated City staff and new hires.	Did Not Meet Goal – The City did not conduct annual construction stormwater training.
4	Investigate 100% of post-construction violations or complaints.	Met Goal – There are currently no post-construction BMPs installed.
4	Implement maintenance plans for new owners or operators once post-construction BMPs is installed.	Met Goal – The City has requirements set in place for long-term maintenance and operations.
5	Maintain an inventory of City-owned and operated facilities and stormwater controls and update as necessary.	Met Goal – City maintains inventory of City-owned and operated facilities.
5	Provide annual municipal employee training at least once a year for designated staff and new hires.	Did Not Meet Goal – The City did not conduct annual construction stormwater training.
5	Implement contractual requirements to new contractors.	Met Goal – The City has requirements set in place for contractors. However, the City only occupies contractor for emergency maintenance.
5	Maintain contracts with current contractors and revise as necessary.	Met Goal – The City has requirements in place for contractors to comply with current stormwater requirements.
5	Inspect 100% of municipal operations and facilities once a year.	Did Not Meet Goal – The City did not annually inspect municipal operations and/or facilities.



Phase II MS4 Annual Report Form TPDES General Permit Number TXR040000

C. Stormwater Data Summary (Part IV Section B.2. (b))

1. Provide a summary of all information used, including any lab results (if sampling was conducted) to assess the success of the SWMP at reducing the discharge of pollutants to the MEP.

The following BMPs were used to evaluate the success of the SWMP at reducing pollutants to the maximum extent practicable.

- Public Reporting & Response Procedures
 - The City actively encourages, tracks, and responds to residents observations of illicit discharges. While this does not require City forces to actively monitor, it allows for more “boots on the ground”, more visual coverage, and city awareness and response.
- Source Investigation and Elimination
 - The City has developed written procedures for responding to illicit discharges including inspections, investigations, and corrective actions. Additionally, City staff that are routinely exposed to pollutant sources are trained to monitor and observe conditions as part of their day-to-day operations.
- Construction Site Inspections and Enforcement
 - This BMP requires city stormwater personnel to be actively monitoring construction sites for stormwater pollutants.
- Municipal Operation and Maintenance Activities
 - Observing the municipal operations and maintenance activities identifies possible pollutants that can be discharged into storm drains. In future years, the City has identified a BMP that will define monitoring and inspection frequencies which will result in active monitoring and observance of potential pollution.

D. Impaired Waterbodies (Part IV Section B.2. (c))

1. **Identify whether an impaired water within the permitted area was added to the latest EPA-approved 303(d) list of the Texas Integrated Report of Surface Water Quality for CWA Sections 305(b) and 303(d). List any newly-identified impaired waters below by including the name of the waterbody and cause of impairment.**

- The City of Everman discharges into North Fork Chambers Creek, South Fort Chamber Creek and Village Creek. The state classified waterbody that ultimately receives the discharge from Everman is Lake Arlington (#0828). While this waterbody is not located within a TMDL watershed, Village Creek is listed as impaired on the TCEQ 2014 303d Impaired Waterbodies list for bacteria. The City of Everman has implemented BMPs specifically targeting bacteria, including Pet Waste Management and Park Cleanups. The City will monitor and determine the effectiveness of these BMPs throughout the permit term and make any changes as needed.

2. **If applicable, explain below any activities taken to address the discharge to impaired waterbodies, including any sampling results and a summary of the small MS4's BMPs used to address the pollutant of concern.**

- Not applicable. The City of Everman discharges into an impaired water body (Village Creek) without an approved TMDL by TCEQ or EPA.



Phase II MS4 Annual Report Form TPDES General Permit Number TXR040000

3. Describe the implementation of targeted controls if the small MS4 discharges to an impaired waterbody with an approved TMDL.

- Not applicable. The City of Everman discharges into an impaired water body (Village Creek) without an approved TMDL by TCEQ or EPA.

4. Report the benchmark identified by the MS4 and assessment activities:

- Not applicable. The City of Everman discharges into an impaired water body (Village Creek) without an approved TMDL by TCEQ or EPA.

5. Provide an analysis of how the selected BMPs will be effective in contributing to achieving the benchmark:

- Not applicable. The City of Everman discharges into an impaired water body (Village Creek) without an approved TMDL by TCEQ or EPA.

6. If applicable, report on focused BMPs to address impairment for bacteria:

Description of bacteria-focused BMP	Comments/ Discussion
Park Cleanup	The program reduces the amount of trash in the local waterways.
Pet Waste Management	Informing residents about picking up after their pets can decrease the amount of bacteria entering local waterways.
Source Investigation and Elimination	The City has developed written procedures for responding to illicit discharges including inspections, investigations, and corrective actions. Additionally, City staff that are routinely exposed to pollutant sources are trained to monitor and observe conditions as part of their day-to-day operations.

7. Access the progress to determine BMP's effectiveness in achieving the benchmark.

- Not applicable. The City of Everman discharges into an impaired water body (Village Creek) without an approved TMDL by TCEQ or EPA.



Phase II MS4 Annual Report Form TPDES General Permit Number TXR040000

E. Stormwater Activities (Part IV Section B.2. (d))

Describe any stormwater activities the MS4 operator has planned for the next reporting year.

MCM	BMP	Stormwater Activity	Description/Comments
1	Educational Brochures	Provide brochures to the public at City facilities. Distribute brochures to at least one City event each year.	The City will continue to provide educational brochures to at City facilities.
1	Park Cleanup	Advertise the park cleanup at least once of the City's website.	The City will advertise the park cleanup on the City's website.
1	Park Cleanup	Coordinate at least once annual cleanup event.	The City will continue to host an annual cleanup event.
1	Pet Waste Management	Provide educational material pet waste at 1 City events annually.	The City will distribute educational material about pet waste management to residents.
1	Storm Drain Marking	Annually inspect 20% of marked inlets. Perform any maintenance if necessary.	The City will continue to maintain storm drains each year.
1	Youth Education	Distribute educational material to local schools.	The City will continue to educate material to local schools.
1	Stormwater Education	Post SWMP on City's website no later than 30 days after the approval date.	The City will post the SWMP once the program is approved.
1	Stormwater Education	Post annual reports on City's website no later than 30 days after the due date.	The City will post the annual reports on the City's website.
1	SWMP Annual Review	Annually review SWMP to ensure compliance.	The City will annually review the SWMP to ensure compliance.
2	Illicit Discharge Ordinance	Conduct 100% of illicit discharge inspections.	The City will continue to enforce the illicit discharge ordinance and document any actions taken.



Phase II MS4 Annual Report Form TPDES General Permit Number TXR040000

MCM	BMP	Stormwater Activity	Description/Comments
2	Illicit Discharge Ordinance	Investigate 100% of illicit discharges reported.	The City will continue to investigate 100% of illicit discharges.
2	Storm Drain Outfall Map	Annually update the storm drainage system maps as necessary.	The City will update the storm drain outfall map based on development or redevelopment.
2	Education and Training on Illicit Discharges	Provide annual IDDE training at least once a year for designated City staff and new hires.	The City will provide illicit discharge training for pertinent City staff and document attendees and training materials used.
2	Public Reporting and Response Procedures	Investigate 100% of illicit discharges reported.	The City will investigate 100% of illicit discharges reported.
2	Source Investigation and Elimination	Conduct 100% of illicit discharge inspections.	The City will conduct 100% of illicit discharge inspections.
2	Source Investigation and Elimination	Investigate 100% of illicit discharges reported.	The City will investigate 100% of illicit discharges reported.
3	Erosion and Sediment Control Ordinance	Inspect 100% of construction sites each year.	The City will inspect 100% of construction sites each year.
3	Erosion and Sediment Control Ordinance	Inspect 100% of complaints driven site each year.	The City will inspect 100% of complaint driven site each year.
3	Construction Plan Review Procedures	Administer the construction plan review process for 100% of new regulated construction projects.	The City will continue to administer the review process for all new construction.
3	Construction Site Inspections and Enforcement	Inspect 100% of construction sites each year.	The City's inspector(s) will administer the inspection and enforcement program and document construction site inspections and follow ups.
3	Construction Site Inspections and Enforcement	Inspect 100% of complaint driven site each year.	The City will inspect 100% of complaint driven site each year.



Phase II MS4 Annual Report Form

TPDES General Permit Number TXR040000

MCM	BMP	Stormwater Activity	Description/Comments
3	Construction Stormwater Training	Conduct annual construction stormwater training at least once a year for designated City staff and new hires.	The City will continue to implement and track the training program for the designated employees.
4	Post Construction Ordinance	Investigate 100% of post-construction violations or complaints.	The City will implement and enforce the newly enacted Post-Construction Ordinance and document any enforcement actions taken.
4	Long-Term Maintenance of Post-Construction BMPs	Implement maintenance plans for new owners or operators once post-construction BMPs is installed.	The City will develop requirements for the long-term operation and maintenance of structural controls installed on the development sites.
5	Facility and Stormwater Control Inventory	Maintain an inventory of City-owned and operated facilities and stormwater controls and update as necessary.	The City will prepare and maintain an inventory of City-owned and operated facilities and stormwater controls.
5	Municipal Employee Training Program	Provide annual municipal employee training at least once a year for designated staff and new hires.	The City will implement the municipal employee training program and maintain a training attendee list with signatures.
5	Contractor Requirements and Oversight	Implement contract requirements to new contractors.	The City will develop contractual requirements for applicable contractor agreements and written oversight procedures.
5	Contractor Requirements and Oversight	Maintain contracts with current contractors and revise as necessary.	The City will maintain contracts with current and new contractors.
5	Municipal Operation and Maintenance Activities	Inspect 100% of municipal operations and facilities once a year.	The City will develop pollution prevention measures for municipal O&M activities and select inspection frequencies.



Phase II MS4 Annual Report Form TPDES General Permit Number TXR040000

F. Stormwater Modifications (Part IV Section B.2.(e))

1. The SWMP and MCM implementation procedures are reviewed each year.

Yes No

2. Changes have been made or are proposed to the SWMP since the NOI or the last annual report, including changes in response to TCEQ's review.

Yes No

If "Yes", report on changes made to measurable goals and BMPs:

G. Additional BMPs (Part IV Section B.2.(f))

Provide a description and schedule for implementation of additional BMPs that may be necessary, based on monitoring results, to ensure compliance with applicable TMDLs and implementation plans.

- No additional BMPs are anticipated for the City of Everman at this time.

H. Additional Information (Part IV Section B.2.(g))

1. Is the permittee relying on another entity/ies to satisfy some of its permit obligations?

Yes No

2.a. Is the named permittee sharing a SWMP with other entities?

Yes No

2.b. If 'yes,' is this a system-wide annual report including information for all permittees?

Yes No

I. Construction Activities (Part IV Section B.2.(h-i))

1. The number of construction projects in the jurisdiction of the MS4 where the permittee was not the construction site operator (as provided in submittals to the MS4 operator via notices of intent or site notices). 0

2. Does the permittee utilize the optional seventh MCM related to construction?

Yes No

2.b. If 'yes' then provide the following info for this permit year:



Phase II MS4 Annual Report Form TPDES General Permit Number TXR040000

The number of municipal construction activities authorized under this general permit	N/A
The total number of acres disturbed for municipal construction projects	N/A

J. Certification

I certify under penalty of law that this document and all attachments were prepared under my direction or supervision in accordance with a system designed to assure that qualified personnel properly gathered and evaluated the information submitted. Based on my inquiry of the person or persons who manage the system, or those person directly responsible for gathering the information, the information submitted is, to the best of my knowledge and belief, true, accurate, and complete. I am aware that there are significant penalties for submitting false information, including the possibility of fine and imprisonment for knowing violations.

Name: Craig W. Spencer

Title: City Manager

Signature:  _____

Date: 01/04/2024



STORMWATER MANAGEMENT PROGRAM

ANNUAL REPORT FORM

MCM: **Public Education, Outreach, & Involvement**

BMP Title: **Educational Brochures**

Responsible Department: Public Works

Measurable Goal: Year 4 – Provide brochures to the public at City facilities. Distribute brochures to at least one City event each year.

1. Was the measurable goal accomplished for this permit year? Yes No

(a) If so, explain what was done to accomplish the measurable goal.

Stormwater Education flyers are available for residents and visitors at City Hall and the Library.

(b) If not, why was the measurable goal not accomplished?

Unfortunately, the City did not distribute educational information at a City event this year.

2. Was this BMP appropriate to meet the intended MCM(s)? Yes No

3. Was this BMP considered to be successful? Yes No

(a) Please explain.

The BMP is considered partially successful. The City understands that educating the public about stormwater pollution is paramount to a successful program and raises awareness of stormwater pollution.

4. Are any changes to this BMP recommended for the next permit term? Yes No

(a) If so, please explain.

5. Will a Notice of Change (NOC) be issued for this BMP? Yes No

Landscape Irrigation

A "TAKE CARE OF TEXAS" GUIDE

One of the most important steps in maintaining a healthy landscape is effective irrigation. A properly watered lawn and garden is more resistant to pests and other lawn problems. However, much of the water used to maintain our landscapes is wasted through inefficient watering techniques. By developing a water-efficient lawn and garden, you can maintain a healthy and beautiful yard that benefits the environment.

Water-Efficient Landscapes

A water-efficient landscape starts with plant selection. Choosing plants adapted to the area will help make your landscape both beautiful and water-efficient. Plants native to your area typically require less maintenance and smaller amounts of pesticides, fertilizers, and supplemental water.

Keep in mind, though, that newly established landscaping will require

more water than an established area. Adjust your watering schedule according to the needs of your plants.*

Watering Mistakes

Much of the water applied to lawns and gardens never gets absorbed by the plants. Common ways that water is wasted include:

- **Runoff.** Applying water too rapidly causes runoff, because grass and plants can only absorb so much water at a time. When runoff occurs, soil, fertilizers, and pesticides can be carried to nearby streams.
- **Evaporation.** Watering in the middle of the day or using a sprinkler that sprays a fine mist causes much of the water you apply to be lost through evaporation. Plants don't have enough time to absorb the water before it is evaporated by the sun.
- **Underwatering.** Watering too little is wasteful because it does

little to alleviate any drought stress that the plants may have.

- **Overwatering.** Applying too much or too often causes the greatest waste of water. In addition to overwatering the plant, excessive irrigation can leach nutrients deep into the soil away from plant roots, which increases the chances of runoff pollution.

Good Watering Techniques

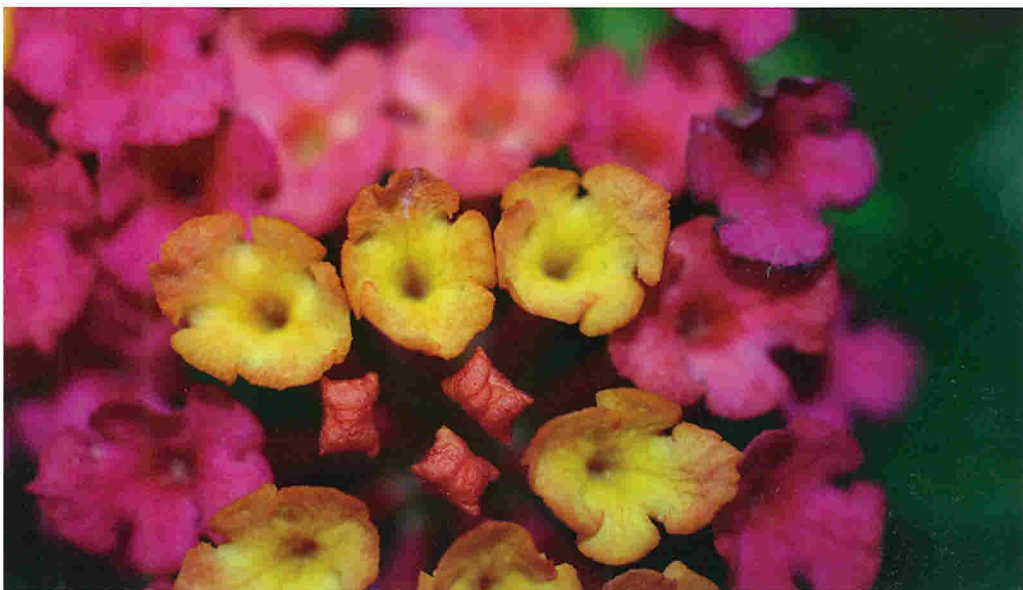
The key to watering lawns is to apply water infrequently, yet thoroughly. This creates a deep, well-rooted lawn that efficiently uses the water that is stored in the soil. To know when to water your lawn, simply observe the grass. Wilting and discoloration are signs of water stress. At the first sign of wilting, you have 24 to 48 hours before damage occurs.

To water properly, apply 1 inch of water to the lawn as rapidly as possible without runoff.

- An easy way to measure your application of water is to place a 6-ounce tuna can on your lawn. When the can is full, you have applied enough water.
- If you start to notice runoff before the can is full, turn off the water. Then, wait for approximately one hour to allow the grass to absorb the water, turn the water on again, and wait for the tuna can to fill.

Water early in the morning, before 10 a.m. Avoid watering from mid-morning to late afternoon, when you can lose one-third of your water to evaporation. Also avoid watering in the evening, because lawns and plants that are left wet overnight are more prone to disease.*

**Always comply with your water system's water-use restrictions.*



Irrigation Systems

The goal of any irrigation system is to give plants a sufficient amount of water without wasting any. You can effectively achieve water conservation in your landscape using underground sprinkler, hose-end sprinkler, or drip irrigation systems.

To make sure your underground or drip irrigation system works properly and conserves water, discuss your landscaping needs and plans with a licensed irrigator. You can design and install your own landscape irrigation system but it must meet required state and local design standards. You may also hire a licensed irrigator to install a system for you. To locate a licensed irrigator in Texas, visit <www2.tceq.texas.gov/lic_dpa/>.

Please note that all built-in irrigation systems are required to be connected using an approved backflow-prevention method.

Spray systems can consist of "hose-end" sprinklers that you can set up and move around the yard, or can be built-in irrigation systems. Your area may have specific requirements for built-in irrigation systems, including obtaining

Rainwater Harvesting

Rainwater harvesting can offer you another effective way to conserve water in your yard. An easy way to begin harvesting rainwater is by directing a gutter downspout into a barrel and using the collected water in gardens or on potted plants. Rainwater is free, and it's better for your plants than treated water, because it does not contain hard minerals.

For more information, see the publications *Rainwater Harvesting with Rain Barrels: A "Take Care of Texas" Guide* (GI-383) <www.tceq.texas.gov/goto/gi-383> and *Rainwater Harvesting* (GI-404, reprinted courtesy of the Texas A&M AgriLife Extension Service) <www.tceq.texas.gov/goto/gi-404>.

a permit for the system and installing the appropriate backflow-prevention assembly.

Make sure that the hose-end sprinkler heads are adjusted so as to avoid watering sidewalks and driveways or other hard surfaces. A hose-end sprinkler head should spray large droplets of water instead of a fog of fine mist, which wastes water by evaporation and wind drift. Set a timer, so that you remember to turn off the hose-end sprinkler.

When used properly, built-in automatic sprinkler systems can help you water effectively. Many underground irrigation systems use timed controllers

that turn off the system when a measured amount of water is used. Moisture sensors help prevent watering in the rain and are now required in most Texas counties. Check with your local water supplier to make sure your irrigation system meets the requirements that are in place for your area.

Built-in sprinkler systems require maintenance and adjustments. This can be done by you or a licensed irrigator or plumber.

Don't just set the built-in system in the spring and leave it on all season. Check your settings periodically to make sure that water is being applied properly, and make adjustments as needed. Many times, you can reduce the amount of time that your irrigation system is operating by 25 percent without affecting the health of your plants.

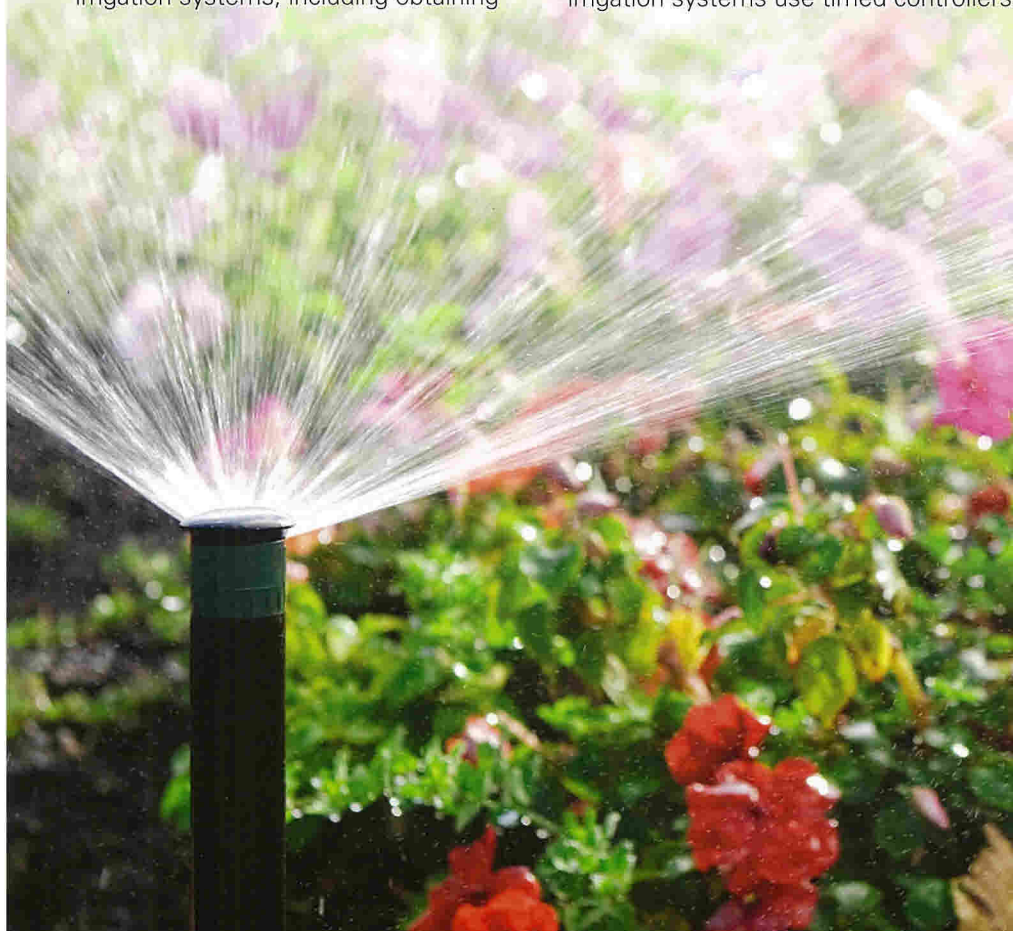
Check your sprinkler heads regularly. Remove any dirt or debris that may be clogging the nozzle and make sure that water is flowing at the proper pressure. Check for leaks, and repair them promptly.

Not all areas of your yard will necessarily have the same watering requirements. Some plants and trees may require less water than grass does; make sure you reduce the sprinkler run time for these areas.

For more information on irrigation systems, see *Landscape Irrigation: A Consumer's Guide to Landscape Irrigation in Texas* (TCEQ publication GI-390) <www.tceq.texas.gov/goto/gi-390>.

Drip Irrigation

Drip irrigation can offer a more efficient method of watering than a sprinkler can, particularly in small areas. Installation can be inexpensive and, with maintenance, a drip system can last as long as other irrigation systems. You can install



drip irrigation systems on or below the ground's surface, so consider the use and care of the area being irrigated. Consult a licensed irrigator to determine the appropriate type of drip irrigation system for your needs.

Drip irrigation applies water to the soil slowly. The water flows under low pressure through emitters, bubblers, or spray heads placed at intervals. Because drip irrigation systems distribute water slowly, the run time may be significantly longer than that for a traditional sprinkler system. However, there will be less evaporation and loss due to runoff.

There are many benefits to drip irrigation:

- With proper management, drip irrigation reduces water loss by 60 percent or more, compared with traditional watering methods. Because drip irrigation applies water just where it is needed, there is little chance of waste through evaporation or runoff.
- The soil moisture remains relatively constant.
- Water contact with the leaves, stems, and fruit of plants is minimized, preventing disease.
- Rows between plants remain dry, which reduces weed growth.
- Once installed, little labor is required to operate or maintain a drip irrigation system.

Operating a drip system is mostly a matter of deciding how often to turn it on and how long to leave it on. The object is to maintain adequate soil moisture without wasting water by applying too much.

- For newly seeded gardens, the system should run only a short time every day for a few days, to keep the surface soil from drying out.
- Plants loaded with fruit will need an inch of water every other day.

Use drip irrigation for watering vegetables, ornamental and fruit trees, shrubs, vines, and container-grown plants outdoors. Drip irrigation is not well suited for solid plantings of shallow-rooted plants such as grass and some ground covers.*

Soaker Hoses

Soaker hoses can offer an easier and cheaper alternative to drip irrigation. A soaker hose is a porous hose that you can connect to an outside faucet, garden hose, or rain barrel and lay out along the base of plants. This system works well with plants that are close together, like ornamental beds with clumped flowers or ground covers.

However, you should not use a soaker hose to irrigate plants, trees, or shrubs that are spaced far apart,

because the area between the plants will be excessively watered, which wastes water and could lead to weaker plants.

Cross-Connection Control and Backflow Prevention

To help maintain the quality of our drinking-water supplies, it is important that all Texas homeowners and landscapers help ensure the proper control of cross-connections and the prevention of possible backflow when using any irrigation system.

What is a cross connection?

A cross-connection is a physical connection between drinkable water and a liquid or gas that could make the water unsafe to drink.

What is backflow?

Backflow is water flowing against its intended direction, which can contaminate the water supply. Backflow can be caused by either a loss of pressure in the supply lines or an increase in pressure on the customer's side.

There are several ways that you can prevent backflow in your irrigation system:

- Make sure that the end of your garden hose is never submerged in water not suitable for drinking.
- Install a hose bibb vacuum breaker on each of your outside faucets. These inexpensive devices are available in most hardware stores and are designed to allow water to flow in only one direction.
- Schedule a licensed tester of backflow-prevention assemblies to perform a test to confirm that your backflow-prevention assembly is operating properly. Keep in mind that you must have the licensed tester examine all backflow-prevention assemblies upon installation.** Check with your water provider about more stringent regulations that may apply, which could require annual testing of backflow prevention assemblies.



* Always comply with your water system's water-use restrictions.

** Property owners who are not connected to a public water system, such as those using only their own well, may be exempt from this requirement.

For More Information

If you are thinking about installing your own irrigation system or would like to know more about the requirements for irrigation systems and licensed landscape irrigators, the rules explaining those requirements can be found in Title 30, Texas Administrative Code, Chapter 344.

The TCEQ's *Landscape Irrigation Program: Implementation* (RG-466) <www.tceq.texas.gov/goto/rg-466> explains the new rules (effective Jan. 1, 2009) relating to landscape irrigation for both licensed professionals and customers.

The Environmental Protection Agency's *Cross-Connection Control Manual* <water.epa.gov/infrastructure/drinkingwater/pws/crossconnectioncontrol/crossconnectioncontrol_manual.cfm> offers information on cross-connection controls and methods of backflow prevention.

Always contact your local water supplier before planning or installing an irrigation system to ensure that you comply with any requirements.

Landscape Irrigation complements the "Take Care of Texas" *Guide to Yard Care*, which is meant to be a general overview of ways you can help take care of Texas in your own yard. For more detailed information, see the following other TCEQ "Take Care of Texas" guides at <TakeCareOfTexas.org/news-publications/publications>:

- *The "Take Care of Texas" Guide to Yard Care* (GI-28)
- *Mulching and Composting* (GI-36)
- *Rainwater Harvesting with Rain Barrels* (GI-383)
- *Managing 10 Common Texas Yard Pests* (GI-405)
- *Managing Lawn Problems in Texas* (GI-407)

Additional Resources

General Information

Texas Commission on Environmental Quality
www.tceq.texas.gov

Texas Water Development Board
www.twdb.texas.gov

Texas A&M AgriLife Extension Service
agrillifeextension.tamu.edu

Yard Care


Texas A&M AgriLife Extension, EarthKind
earthkind.tamu.edu

For more information, contact:

Pollution Prevention and Education, MC 108
Texas Commission on Environmental Quality
PO Box 13087
Austin TX 78711-3087
512-239-3143
www.tceq.texas.gov

How is our customer service? www.tceq.texas.gov/customersurvey

The TCEQ is an equal opportunity employer. The agency does not allow discrimination on the basis of race, color, religion, national origin, sex, disability, age, sexual orientation or veteran status. In compliance with the Americans with Disabilities Act, this document may be requested in alternate formats by contacting the TCEQ at 512-239-0028, Fax 512-239-4488, or 800-RELAY-TX (TDD), or by writing P.O. Box 13087, Austin, TX 78711-3087.

 Printed on recycled paper using vegetable-based ink.

Managing Lawn Problems in Texas

A "TAKE CARE OF TEXAS" GUIDE

Choose Your Landscape

When choosing a landscape for your yard, it is important to consider not only what you want your yard to look like, but the amount of resources and time necessary to maintain it. Lawn alternatives, such as drought tolerant native plants, can save water and energy as well as time and money by requiring little maintenance. For more information on selecting a landscape, visit <earthkind.tamu.edu>.

If you decide to have a lawn, consider planting a less extensive grass landscape and choose a turf that is right for your region and environment.

Choose Your Turf

When properly maintained, turfgrass can have a positive impact on the environment. Turfgrass that is actively

growing can be beneficial to your yard and the environment by helping to:

- stabilize soil;
- conserve water;
- filter air- and water-borne pollutants;
- suppress and control dust, glare, and noise; and
- dissipate heat.

Choosing the right type of turfgrass is an important first step in maintaining a healthy lawn. The most commonly used grasses in Texas are St. Augustine, Bermuda, buffalo, centipede, tall fescue, and zoysia, which are generally compatible with the state's diverse climate conditions. When choosing what type of grass to use, keep in mind its tolerance to shade, drought, traffic, cold, salinity, and disease. Properly adapted turfgrass will require less maintenance

and smaller amounts of fertilizer and supplemental water.

For more information on selecting grasses, visit Aggie Turf, at <aggieturf.tamu.edu>.

Maintain Your Lawn

Maintaining a healthy turf will help you avoid many common lawn problems, as well as the need for many pesticides—including insecticides, herbicides, and fungicides. The following tips will help you keep your lawn healthy and beautiful:

- Choose the correct turf for your light conditions and lawn use.
- Establish an adequate depth of healthy soil (at least 6 inches under your turf).
- Aerate your lawn once a year to improve drainage and reduce soil compaction.
- Irrigate efficiently, making sure to:
 - » water in the morning, before 10 a.m.,*
 - » wet the soil to a depth of 4–6 inches, and
 - » allow the soil to dry out between watering.
- Mow properly, taking no more than one-third of the grass blade off with each mowing.
- Be careful not to overfertilize, which can weaken turf, as well as contribute to water pollution by causing excess nutrients to be released into rainfall runoff. Choose natural or organic fertilizers, such as compost, which typically slow-release their nutrients and can often be used in smaller amounts.
- Test your soil periodically to determine which nutrients are lacking, before you decide whether or not to fertilize.

*Always comply with your water system's water-use restrictions.



Common Lawn Problems

Fungal Diseases



Take-All Patch

Take-all patch first appears as a yellowing of the grass and a darkening of the grass roots, followed by a thinning of the turf in irregular shapes. The darkening of the roots indicates rotting, and the roots can rot so extensively that the grass can be easily pulled up.

Infestation and Attack

Take-all patch most commonly affects St. Augustine, zoysia, and Bermuda grasses, and can rot roots so badly that it eventually kills the entire lawn. It spreads mainly during the fall, winter, and spring, when there is more moisture and cool or mild temperatures. However, the symptoms generally do not appear until the hot, stressful days of summer.

Prevention and Solutions

- Maintain good drainage in your lawn area.
- Avoid overfertilization of turf areas, as excessive nitrogen seems to promote take-all patch.
- Raise the mowing height on your mower to reduce stress to your turf.
- Avoid the use of broadleaf herbicides, which may weaken your turf.
- Avoid urea-based fertilizers.



Brown Patch

Brown patch first causes circular patterns of dead grass blades; in two to three weeks, new leaves may emerge in the center of the circular patch, giving diseased areas a donut-shaped appearance. The affected grass turns brown and grass blades rot and break off from the runners.

Infestation and Attack

Brown patch most commonly attacks St. Augustine grass and can spread in an area of 1 to 50 square feet. It occurs in late fall through early spring and is promoted by wet weather or frequent irrigation.

Prevention and Solutions

- Avoid overfertilization or overwatering of your lawn.
- Aerate your lawn once a year.
- At the first sign of the disease, apply a fungicide to the affected area.

Lawn Stresses



Shade Stress

Turf grass that is affected by shade stress (lack of sunlight) thins and disappears, leaving bare patches of soil and/or areas of weeds.

Infestation and Attack

Buffalo and Bermuda grasses do not grow well in shaded areas—these grasses are the most susceptible to shade stress.

Prevention and Solutions

- For planting in shady areas, choose shade-tolerant groundcovers or shade-tolerant turf grasses (such as St. Augustine or zoysia).
- Thin out tree branches a bit to “brighten” shady areas.
- Raise the mowing height on your mower to allow more grass blade to capture sunlight.





Iron Chlorosis

Iron Chlorosis causes the blades of the grass to develop green and yellow stripes, or to turn completely yellow. It occurs in alkaline (high pH) soils with high phosphorus levels, and under cool and wet soil conditions.

Infestation and Attack

St. Augustine grass is most susceptible to Iron Chlorosis.

Prevention and Solutions

- Do not use fertilizers that are high in phosphorus.
- Topdress your turf with 1/4- to 1/3-inch of compost.
- Aerate your lawn once a year.
- For temporary relief, try adding iron supplements to your lawn.



Drought Stress

Grass affected by drought stress looks blue-green or silverish, and individual blades curl. Footprints remain in the lawn after you step on it. The soil under the lawn is dry.

Tolerance to Drought

All turf can survive some drought stress, although some types of turf require less water than others.

- *St. Augustine*: drought tolerant in shade only
- *Bermuda*, *zoysia*: drought tolerant
- *Buffalo*: very drought tolerant

Prevention and Solutions

- Choose drought-tolerant turf grass.
- Irrigate efficiently.
- For sloped areas, consider alternatives to turf.

Weeds

The two most common types of weeds are:

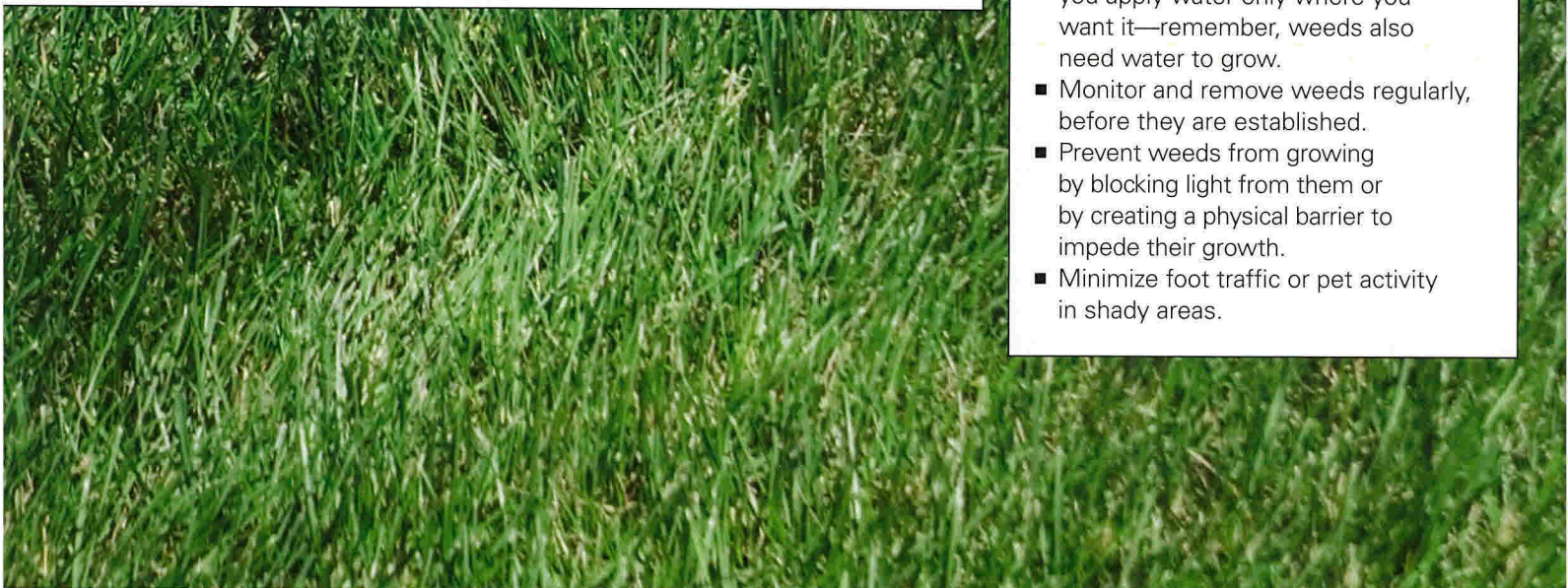
- **Grassy.** Grassy weeds have jointed, hollow stems. Their leaf blades have veins parallel to the margins and are several times longer than they are wide. Their roots are fibrous and multi-branching and their flowers are usually inconspicuous.
- **Broadleaf.** Broadleaf weeds often have showy flowers. Their leaves have a network of veins at diverse angles to one another. Their stems are often pithy and they usually have a taproot.

Infestation and Attack

Weeds are often the result of poor-quality turf, rather than being the cause of it. Weeds are aggressive and reproduce quickly, enabling them to invade areas of thin, weak turf.

Prevention and Solutions

- Keep plants healthy—this will help them outcompete weeds.
- Do not let weeds flower or go to seed—this will greatly increase their potential population.
- Do not bring soil with weed seeds or weed roots on-site.
- Use drip irrigation in beds so that you apply water only where you want it—remember, weeds also need water to grow.
- Monitor and remove weeds regularly, before they are established.
- Prevent weeds from growing by blocking light from them or by creating a physical barrier to impede their growth.
- Minimize foot traffic or pet activity in shady areas.



FREQUENTLY ASKED QUESTIONS



TEST YOUR SOIL

Grass and other plants can be weak and unhealthy for a variety of reasons, including over-application of fertilizer. The best and only sure way to know if the soil in your yard lacks sufficient nutrients is to get a soil test from a qualified soil lab. A soil test can tell you just what your soil needs, and how much of it.

A basic soil test covers soil hydrogen ion concentration (pH or acidity/alkalinity) and the primary nutrients: nitrogen, phosphorus, and potassium (NPK). For an additional fee, you can request testing for micronutrients, organic matter, and soil texture. Your county Texas A&M AgriLife Extension agent can help you get an inexpensive soil test, go over the results with you, and advise you on the best subsequent course of action. For information on your local Texas A&M AgriLife Extension office, visit <agrilifeextension.tamu.edu>.

If you do encounter a problem in your lawn, try solving it using natural, non-invasive methods.

What can I do to make sure my soil is healthy?

A soil test is the best way to find out which nutrients your soil lacks. Contact your local Texas A&M AgriLife Extension office for assistance in obtaining a test.

In most cases, compost is the best soil additive you can use. Compost contains micronutrients—such as iron and manganese—that are often absent in synthetic fertilizers. Compost also balances both acidic and alkaline soils, bringing pH levels into the optimum range for nutrient availability.

For more information, see *Mulching and Composting: A "Take Care of Texas" Guide* (GI-36) <TakeCareOfTexas.org/publications>.

Is it okay to use some pesticides?

Synthetic chemical pesticides can be effective at wiping out pests, but rarely provide long-term solutions, and may create additional problems by wiping out beneficial plants and animals along with the pests. Ensuring that your lawn and soil are healthy, as well as using native and adapted plants, will help you reduce the need for pesticides.

If you decide to use pesticides:

- Look for the least-toxic products that will do the job, and make sure they target the particular pest you're facing.
- Read the label first, including all precautions and restrictions, and then follow the directions carefully.

How frequently should I fertilize my yard?

The best times to apply fertilizer, if it's needed, are at the beginning and end of the growing season, which will vary according to the temperature range in your region. To prevent runoff, do not overwater after applying fertilizer and avoid fertilizing just before a rainstorm.

What are some tips for mowing?

- Avoid cutting grass too short. Mow often enough that each mowing removes no more than one-third of the grass blade. For example, if you set your cutting height at 2 inches, then cut before the grass is more than 3 inches tall.
- Keep your mower's blades sharp and clean, and mow when the grass is dry.
- Mow over leaves, so that they will decompose along with the grass clippings.
- Consider using mulching blades/kits to shred clippings and leaves as you mow.
- Consider use of more efficient equipment to help keep our air clean. Hand tools, such as push reel mowers, are lightweight, quiet, and easy to use and do not generate emissions.

Managing Lawn Problems in Texas complements the "Take Care of Texas" *Guide to Yard Care*, which is meant to be a general overview of ways you can help Take Care of Texas in your own yard. For more detailed information, see the following other TCEQ "Take Care of Texas" guides at <TakeCareOfTexas.org/publications>:

- *The "Take Care of Texas" Guide to Yard Care* (GI-28)
- *Mulching and Composting* (GI-36)
- *Rainwater Harvesting with Rain Barrels* (GI-383)
- *Managing 10 Common Texas Yard Pests* (GI-405)
- *Landscape Irrigation* (GI-409)

How is our customer service? www.tceq.texas.gov/customersurvey

The TCEQ is an equal opportunity employer. The agency does not allow discrimination on the basis of race, color, religion, national origin, sex, disability, age, sexual orientation or veteran status. In compliance with the Americans with Disabilities Act, this document may be requested in alternate formats by contacting the TCEQ at 512-239-0028, Fax 512-239-4488, or 800-RELAY-TX (TDD), or by writing P.O. Box 13087, Austin, TX 78711-3087.

♻️ Printed on recycled paper using vegetable-based ink.

Be Water Wise at Home



Turn off the water while you brush your teeth and save up to 4 gallons a minute. That's up to 200 gallons a week for a family of four.

Plug the sink instead of running the water to rinse your razor and save up to 300 gallons a month.



A faucet leaking at a rate of one drop per second can waste up to 3,000 gallons of water a year.



Reducing a 10-minute shower to 5 minutes will save 12.5 gallons of water in each occasion.



Install more efficient appliances and plumbing fixtures. A water-efficient showerhead can reduce water use by 25 to 60 percent, saving up to \$145 a year.



4,000 gallons

Water-efficient toilets save up to 4,000 gallons of water a year.

If your toilet flapper doesn't close properly after flushing, replace it.

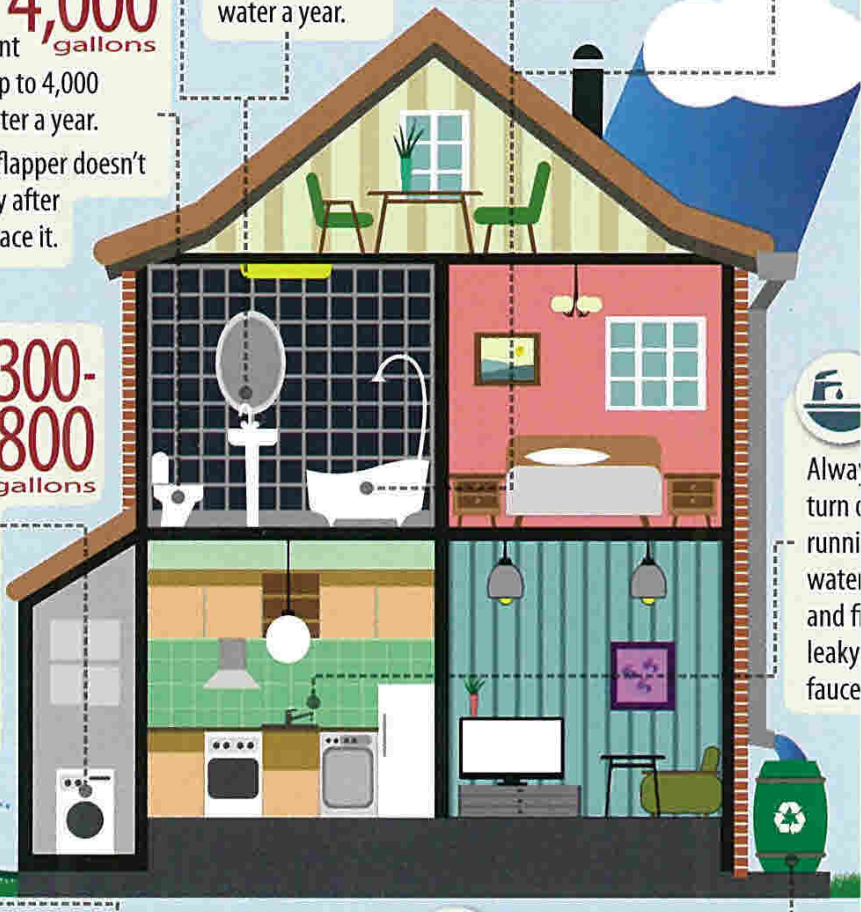


300-800 gallons

Save 300-800 gallons of water a month by washing dishes and laundry only when the machine is full.



Always turn off running water and fix leaky faucets.



Sea Prudente con el Agua en Casa



Cierre la llave mientras se cepille los dientes y ahorre hasta 4 galones por minuto. Eso es hasta 200 galones por semana en el caso de una familia de 4 personas.

Apague el lavabo en lugar de dejar que corra el agua para enjuagar su rastrillo y ahorre hasta 300 galones al mes.



Los inodoros modernos y eficientes en agua ahorran hasta 4,000 galones de agua al año.

Si el sello, o sapo, de su inodoro no cierra bien después de la descarga, cámbielo.



Ahorre de 300 a 800 galones de agua al mes lavando platos y ropa sólo cuando la máquina esté llena.

300-800
galones



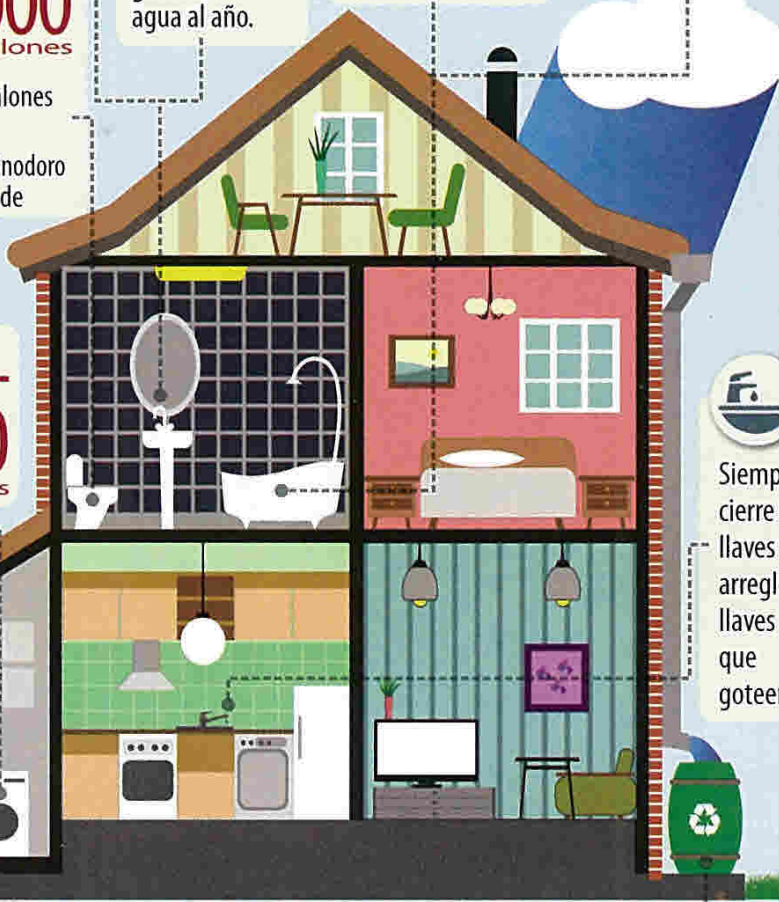
Una llave que gotea a razón de una gota por segundo puede desperdiciar hasta 3,000 galones de agua al año.



Reducir una ducha de 10 minutos a 5 minutos ahorrará 12.5 galones de agua en cada ocasión.



Instale electrodomésticos y dispositivos de plomería más eficiente. Un cabezal de regadera eficiente e agua puede reducir uso de agua en 25 a 60 por ciento, ahorrando hasta \$145 al año.



Siempre cierre llaves arregle llaves que goteen



Ahorrar agua ahorra dinero.

Pruebe estas sencillas sugerencias que le ayudarán a conservar agua y a ahorrar dinero en su cuenta también.

Riegue prudentemente.

El riego del pasto y el jardín forma el 40% del uso total de agua en el hogar. Riegue su jardín a fondo, pero sólo según sea necesario: por lo general no más de una pulgada, una vez por semana.* Considere usar riego por goteo para plantas y jardines, y riegue temprano por la mañana para minimizar la evaporación.

Revise las llaves y los inodoros para ver si tienen goteras.

Una llave que gotea puede desperdiciar hasta 3,000 galones de agua al año. Las tazas que gotean: hasta 73,000 galones de agua al año.

Instale artefactos de plomería que usen agua eficientemente y aireadores para las llaves.

Artefactos de plomería que usen agua eficientemente pueden reducir el consumo de agua entre 25 y 60%. Instalar aireadores reducirá por la mitad la cantidad de agua usada por cada llave.

La Comisión de Calidad Ambiental de Texas (TCEQ, por el nombre en inglés) es un empleador con igualdad de oportunidades. La agencia tiene prohibido la discriminación por motivos de raza, color de piel, religión, origen nacional, sexo, discapacidad, edad, orientación sexual o condición de veterano.

Lave cargas completas de ropa.

Lavando sólo cargas completas de ropa puede ahorrar hasta 3,400 galones de agua al año. ¿Necesita una nueva lavadora? Invierta en un modelo calificado como Energy Star, que típicamente usa 50% menos agua y 37% menos energía.

Pruebe plantas nativas en su paisaje y use agua de lluvia captada.

Plantas nativas típicamente requieren menores cantidades de agua, pesticidas, fertilizantes y mantenimiento. Recolectar agua de lluvia para usar en el jardín no sólo es buenísimo para las plantas, sino que también le puede ahorrar agua y dinero.

¿Cómo cuida usted a Texas?

Visite GuideaTexas.org para más sugerencias sobre la conservación del agua y otras maneras de hacer su parte. ¡Entre al internet y comprométase a Cuidar a Texas!

*Siempre cumpla con las restricciones sobre el uso de agua de su departamento de servicio de agua.

GuideaTexas.org

¿Cómo le parece nuestro servicio al cliente?

www.tceq.texas.gov/encuesta



Impreso en papel reciclado
usando tinta vegetal.



Saving Water Saves Money.

Try these simple tips to help you conserve water and save money on your bill, too.

Water Wisely.

Lawn and garden watering make up as much as 40% of total household water use. Water your yard thoroughly, but only as needed—usually no more than 1 inch, once a week.* Consider using drip irrigation for plants and gardens, and water early in the morning to minimize evaporation.

Check Faucets and Toilets for Leaks.

A leaky faucet can waste up to 3,000 gallons of water per year. Toilet leaks: up to 73,000 gallons a year.

Install Water-Efficient Plumbing Fixtures and Faucet Aerators.

Water-efficient plumbing fixtures can reduce water consumption by 25% to 60%. Installing aerators will cut in half the amount of water used by each faucet.

The Texas Commission on Environmental Quality is an equal opportunity employer. The agency does not allow discrimination on the basis of race, color, religion, national origin, sex, disability, age, sexual orientation, or veteran status.

Wash Full Loads of Laundry.

Washing only full loads of laundry can save up to 3,400 gallons of water each year. Need a new clothes washer? Invest in an Energy Star-qualified model, which typically uses 50% less water and 37% less energy per load.

Try a Native Landscape and Use Collected Rainwater.

Plants that are native to Texas typically require lesser amounts of water, pesticides, fertilizers, and maintenance. Collecting rainwater for landscape use is not only great for the plants, but can save you water and money.

How Do You Take Care of Texas?

Visit TakeCareOfTexas.org for more water-conservation tips and other ways to do your part. Go online and pledge to Take Care of Texas!

**Always comply with your water system's water-use restrictions.*

Take Care of Texas.org

How is our customer service? www.tceq.texas.gov/customerurvey



61-400 (Revised 6/13)



STORMWATER MANAGEMENT PROGRAM

ANNUAL REPORT FORM

MCM: **Public Education, Outreach, & Involvement**

BMP Title: **Park Cleanup**

Responsible Department: Public Works

Measurable Goal: Year 4 – Advertise the cleanup at least once on the City’s website. Coordinate at least once annual cleanup event.

1. Was the measurable goal accomplished for this permit year? Yes No

(a) If so, explain what was done to accomplish the measurable goal.

(b) If not, why was the measurable goal not accomplished?

The City of Everman did not host an annual cleanup event for Year 4.

2. Was this BMP appropriate to meet the intended MCM(s)? Yes No

3. Was this BMP considered to be successful? Yes No

(a) Please explain.

The BMP is considered unsuccessful because it was not completed. The City understands that keeping the City’s stream and channels clear from trash and debris lead to better water quality.

4. Are any changes to this BMP recommended for the next permit term? Yes No

(a) If so, please explain.

5. Will a Notice of Change (NOC) be issued for this BMP? Yes No



STORMWATER MANAGEMENT PROGRAM

ANNUAL REPORT FORM

MCM: **Public Education, Outreach, & Involvement**

BMP Title: **Pet Waste Management**

Responsible Department: Public Works

Measurable Goal: Year 4 – Provide educational material about pet waste at 1 City events annually.

1. Was the measurable goal accomplished for this permit year? Yes No

(a) If so, explain what was done to accomplish the measurable goal.

The BMP was partially completed. The City continues to provide educational flyer at City Hall about proper pet waste disposal and the harmful effects pet waste has in waterbodies.

(b) If not, why was the measurable goal not accomplished?

However, the City was unable to distribute educational material to City events.

2. Was this BMP appropriate to meet the intended MCM(s)? Yes No

3. Was this BMP considered to be successful? Yes No

(a) Please explain.

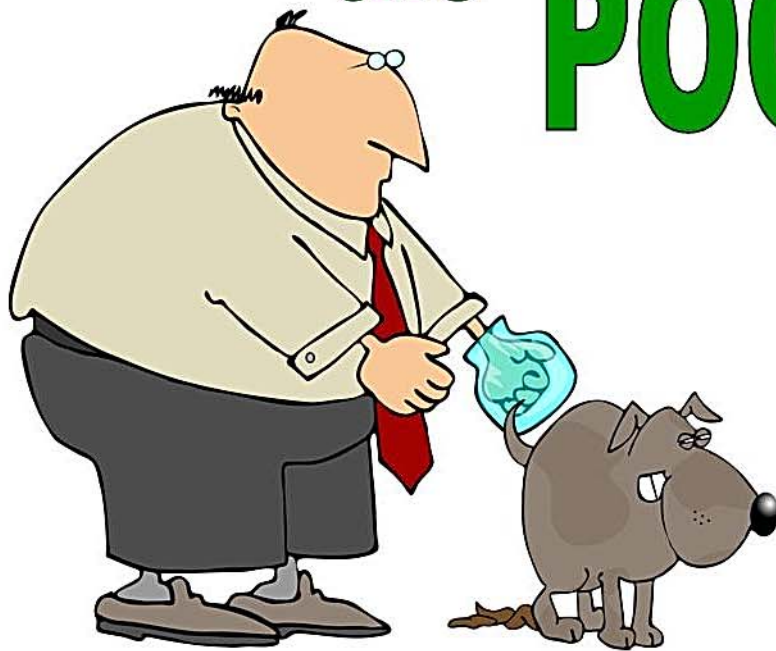
The BMP is partially successful because educational material is provided at City Hall and the public library, but not distributed at City events. The City understands the importance of educating the public about how pet waste impacts stormwater quality.

4. Are any changes to this BMP recommended for the next permit term? Yes No

(a) If so, please explain.

5. Will a Notice of Change (NOC) be issued for this BMP? Yes No

SCOOP the POOP



Always use a bag or scooper to clean up your pet's waste.



Poop left on the ground washes into local streams, lakes & rivers.



Dog droppings are a leading cause of E.coli pollution in local waters.

Do your part: Scoop the Poop to keep our water clean!



STORMWATER MANAGEMENT PROGRAM

ANNUAL REPORT FORM

MCM: **Public Education, Outreach, & Involvement**

BMP Title: **Storm Drain Marking**

Responsible Department: Public Works

Measurable Goal: Year 4 – Annually inspect 20% of marked inlets. Perform any maintenance if necessary.

1. Was the measurable goal accomplished for this permit year? Yes No
- (a) If so, explain what was done to accomplish the measurable goal.

(b) If not, why was the measurable goal not accomplished?

The BMP is considered partially successful. The City has marked all of the inlets, but did not inspect 20% of marked inlets.

2. Was this BMP appropriate to meet the intended MCM(s)? Yes No
3. Was this BMP considered to be successful? Yes No
- (a) Please explain.

Marking storm drains is a great way to deter residents or commercial businesses from dumping waste or pollutants. Storm drain message reminds residents the storm drain goes straight to the creek, not a wastewater treatment plant.

4. Are any changes to this BMP recommended for the next permit term? Yes No
- (a) If so, please explain.

5. Will a Notice of Change (NOC) be issued for this BMP? Yes No



STORMWATER MANAGEMENT PROGRAM

ANNUAL REPORT FORM

MCM: **Public Education, Outreach, & Involvement**

BMP Title: **Youth Education**

Responsible Department: Public Works

Measurable Goal: Year 4 – A minimum of 20% of all schools will be educated every year on stormwater pollution by providing local schools in the City with materials, including brochures, coloring books, and other media.

1. Was the measurable goal accomplished for this permit year? Yes No
(a) If so, explain what was done to accomplish the measurable goal.

(b) If not, why was the measurable goal not accomplished?

The City did not distribute educational material to local schools.

2. Was this BMP appropriate to meet the intended MCM(s)? Yes No
3. Was this BMP considered to be successful? Yes No
(a) Please explain.

The City understands providing stormwater education for youth audiences is an important part of the stormwater program. The more people that are educated, the more likely a reduction in pollutants in stormwater will occur.

4. Are any changes to this BMP recommended for the next permit term? Yes No
(a) If so, please explain.

5. Will a Notice of Change (NOC) be issued for this BMP? Yes No



STORMWATER MANAGEMENT PROGRAM

ANNUAL REPORT FORM

MCM: **Public Education, Outreach, & Involvement**

BMP Title: **SWMP Annual Review**

Responsible Department: Public Works

Measurable Goal: Year 4 – Annually review SWMP to ensure compliance.

1. Was the measurable goal accomplished for this permit year? Yes No
(a) If so, explain what was done to accomplish the measurable goal.

The City of Everman reviewed the Stormwater Management Program along with the current BMPs. No revisions were deemed necessary.

- (b) If not, why was the measurable goal not accomplished?

2. Was this BMP appropriate to meet the intended MCM(s)? Yes No
3. Was this BMP considered to be successful? Yes No
(a) Please explain.

It is important to review the SWMP annually to ensure BMPs are clear, specific, and measurable.

4. Are any changes to this BMP recommended for the next permit term? Yes No
(a) If so, please explain.

5. Will a Notice of Change (NOC) be issued for this BMP? Yes No



STORMWATER MANAGEMENT PROGRAM

ANNUAL REPORT FORM

MCM: **Illicit Discharge Detection and Elimination**

BMP Title: **Illicit Discharge Ordinance**

Responsible Department: Public Works

Measurable Goal: Year 4 – Conduct 100% of illicit discharge inspections.
Investigate 100% of illicit discharges reported.

1. Was the measurable goal accomplished for this permit year? Yes No

(a) If so, explain what was done to accomplish the measurable goal.

The City continues to enforce the illicit discharge ordinance. There was no violations reported for Year 4.

(b) If not, why was the measurable goal not accomplished?

2. Was this BMP appropriate to meet the intended MCM(s)? Yes No

3. Was this BMP considered to be successful? Yes No

(a) Please explain.

Having an ordinance to enforce illicit discharges is an important aspect of the stormwater management program. It allows the City to act on potentially harmful impacts to water quality.

4. Are any changes to this BMP recommended for the next permit term? Yes No

(a) If so, please explain.

5. Will a Notice of Change (NOC) be issued for this BMP? Yes No



STORMWATER MANAGEMENT PROGRAM

ANNUAL REPORT FORM

MCM: **Illicit Discharge Detection and Elimination**

BMP Title: **Storm Drainage Outfall Map**

Responsible Department: Public Works

Measurable Goal: Year 4 – Annually update the map to include any new outfall from development or redevelopment

1. Was the measurable goal accomplished for this permit year? Yes No
(a) If so, explain what was done to accomplish the measurable goal.

The City mapped 100% of the outfalls. The City annually review and update the outfall map include any outfalls from development or redevelopment.

- (b) If not, why was the measurable goal not accomplished?

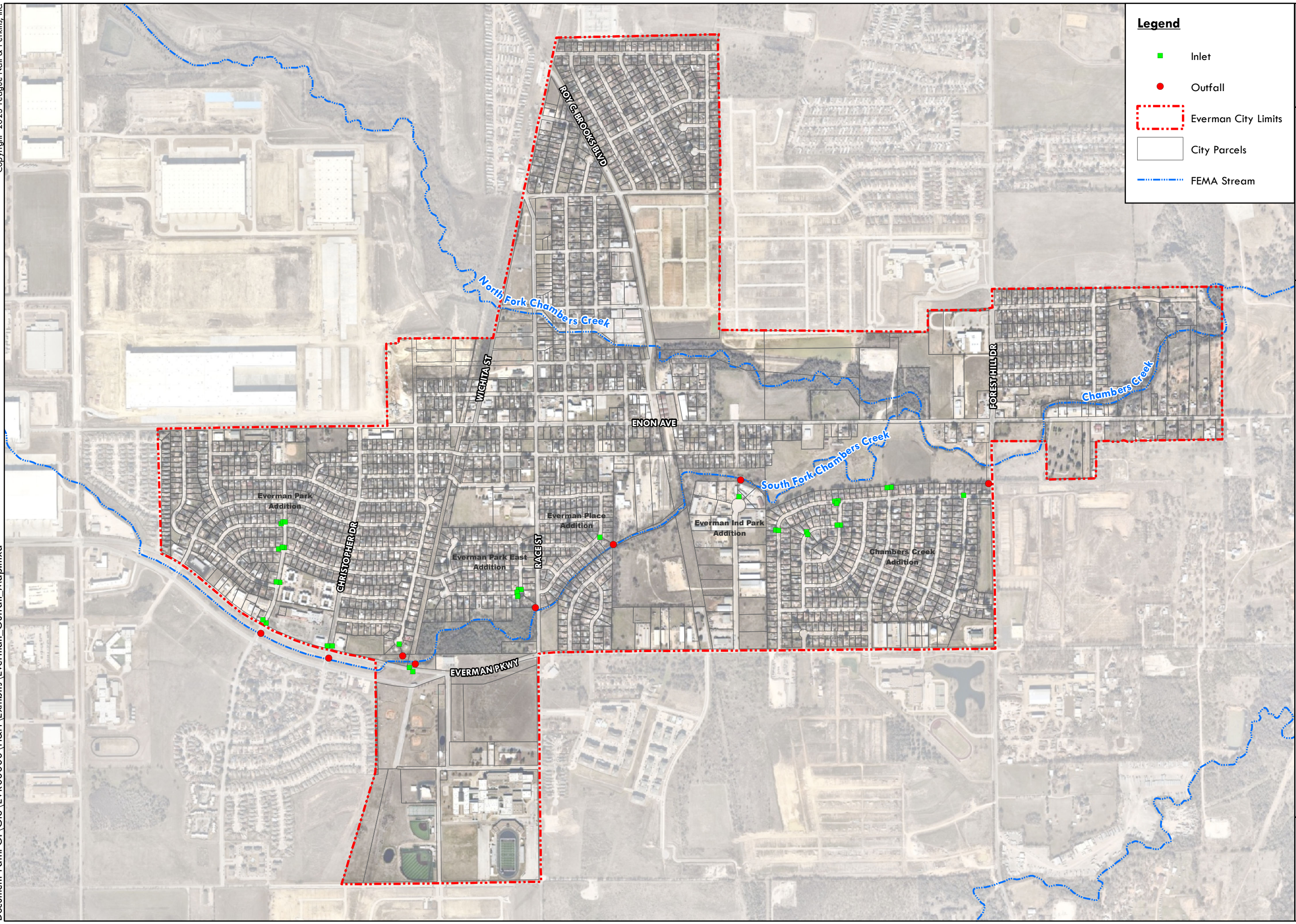
2. Was this BMP appropriate to meet the intended MCM(s)? Yes No
3. Was this BMP considered to be successful? Yes No
(a) Please explain.

The storm drainage outfall map is vital to the success of the illicit discharge detection and elimination program. The map is used to track the location of upstream pollutant discharges when performing the dry weather field inspections.

4. Are any changes to this BMP recommended for the next permit term? Yes No

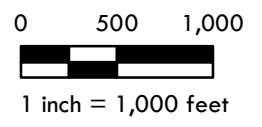
- (a) If so, please explain.

5. Will a Notice of Change (NOC) be issued for this BMP? Yes No



Legend

- Inlet
- Outfall
- Everman City Limits
- City Parcels
- FEMA Stream



Everman, Texas
Everman Stormwater Management Program

EXHIBIT 1
OUTFALL MAP
 May 2023





STORMWATER MANAGEMENT PROGRAM

ANNUAL REPORT FORM

MCM: **Illicit Discharge Detection and Elimination**

BMP Title: **Education and Training on Illicit Discharges**

Responsible Department: Public Works

Measurable Goal: Year 4 – Provide annual IDDE training at least once a year for designated City staff and new hires.

1. Was the measurable goal accomplished for this permit year? Yes No
- (a) If so, explain what was done to accomplish the measurable goal.

(b) If not, why was the measurable goal not accomplished?

The City of Everman did not conduct IDDE training for designated staff or new hires. The City will conduct IDDE training in Year 5.

2. Was this BMP appropriate to meet the intended MCM(s)? Yes No
3. Was this BMP considered to be successful? Yes No
- (a) Please explain.

The City understands educating and training the staff on illicit discharges is important because it identifies any possible illicit discharges and how to resolve them. Reporting and acting when discharges happen can result in minimizing pollution to lakes and streams.

4. Are any changes to this BMP recommended for the next permit term? Yes No
- (a) If so, please explain.

5. Will a Notice of Change (NOC) be issued for this BMP? Yes No



STORMWATER MANAGEMENT PROGRAM

ANNUAL REPORT FORM

MCM: **Illicit Discharge Detection and Elimination**

BMP Title: **Public Reporting & Response Procedures**

Responsible Department: Public Works

Measurable Goal: Year 4 – Investigate 100% of illicit discharges reported.

1. Was the measurable goal accomplished for this permit year? Yes No
- (a) If so, explain what was done to accomplish the measurable goal.

The City has a posted number for residents and businesses to report illegal dumping and illicit discharges on the City website. This year, no reports were received, but the City encourages residents to report any type of illicit discharge.

- (b) If not, why was the measurable goal not accomplished?

2. Was this BMP appropriate to meet the intended MCM(s)? Yes No
3. Was this BMP considered to be successful? Yes No
- (a) Please explain.

Allowing the public to be part of a reporting system helps target and address illicit discharges in a timely manner. City staff alone, is not large enough to be monitoring all waterways at all times.

4. Are any changes to this BMP recommended for the next permit term? Yes No
- (a) If so, please explain.

5. Will a Notice of Change (NOC) be issued for this BMP? Yes No



Timestamp	Submitter's Name	Location of problem	Type	Describe the problem	Status	Notes
2/14/2023 9:14:57	Doug Kilgore	Unit 125	Vehicle/Fleet	Registration is expired/Vehicle has new TSI	In Progress	
3/14/2023 13:00:23	Colby Rhea	Unit 120	Vehicle/Fleet	Vehicle is running rough and overheating almost constantly despite being full of coolant.	In Progress	Reported to need new engine- 190 5-26-23
3/17/2023 5:08:24	L. RAPER 716	NORTH PARKING LOT CAMERA	Computer/IT	NOTICED THE CAMERA SYSTEM WILL NOW SHOW THE NORTH PARKING LOT AND UPON WALKING OUTSIDE TO TEH DRIVEWAY, THE CAMERA APPEARS TO BE OFF, NONE OF ITS NORMAL LIGHTS ARE ON.	Completed	Camera has been replaced
3/19/2023 19:26:50	Jeremy Joiner	Communications position 3	Furniture	The cable that connects to the left handle to raise and lower the keyboard tray on the desk has popped out the bracket side and the tray can't be adjusted.	In Progress	
4/7/2023 11:45:51	Jon Dezaruba	Fire Department	National Telesystem	National Telesystems never returned to fire station to connect the day room phone up.	In Progress	
4/7/2023 13:28:22	Windy McGarrey	Dispatch	Computer/IT	Position 3 - The phone box on the right side of the console is not working properly. The left port seems to have gone out.	In Progress	Both ports have been checked and settings were adjusted. Follow up to occur- BP 6/8
4/13/2023 7:41:19	Erica Soto	DISPATCH-need more brown folders	Dispatch	Need more brown folders	Completed	Manila folders will be used moving forward with new Mansfield and scanning processes - BP 6/8
4/22/2023 12:18:26	C. RHEA # 258	Laptop	Computer/IT	Laptop wont allow login and says that there are too many users when I try to connect with net mobility. The laptop is in the patrol room with 258 attached on a sticky note. The serial number IC number is 216A-CFWL12A	In Progress	
4/23/2023 13:52:21	randy harris	Dispatch	Computer/IT	CAD freezes as you're typing, logging entries, or switching functions	In Progress	
4/23/2023 19:49:11	SGT J. Thompson	Patrol Office	Computer/IT	WatchGuard Video EL4 need to be reinstall on Patrol-01 computer	In Progress	
4/27/2023 15:38:45	Ofc. Bobby Pender #271	Unit #122	Vehicle/Fleet	Leaking washer fluid tank (Needs Replacement)	In Progress	At Bruce Lowrie
4/27/2023 15:41:51	Ofc. Bobby Pender	Unit #122	Vehicle/Fleet	Randomly shifting hard when coming to stop. Check engine light flashing off and on. It then goes off.	In Progress	At Bruce Lowrie
3/27/2023 6:50:50	M. TREPPA	UNIT #122	Computer/IT	AVL NOT WORKING / #235 REQUEST WORK ORDER	Completed	Fixed
4/9/2023 14:03:47	L. RAPER 716	TLETS Printer	Computer/IT	The printer does not seem to be connecting to the TLETS on Everman side. Position 4	In Progress	
4/29/2023 19:20:10	Beverly chavez	Radio/phone jack port	Phone jack/ radio port	Callers/radio are not able to hear dispatcher, switched port to left side, somewhat better, echoes.	In Progress	Adjustments have been made will do a follow up-BP 6/8
5/2/2023 21:31:49	Laura L Lopez	Communications Center	Computer/IT	Unable to read PDF files due to Adobe wanting me to log in. When closing out the sign in box, Adobe closes the entire document. This is on the work computer under my log in. Unsure if others are having same issue. This issue started appx two weeks ago. Beverly was notified via email about the issue when it started.	In Progress	
5/5/2023 11:12:30	Windy McGarrey	Dispatch	Computer/IT	the standalone printer Samsung ML 3312ND needs ink/toner	In Progress	
5/8/2023 5:16:43	SGT Thompson	Street intersections	Street Maintenance (including signs)	The flashing red lights are not working at the following locations. Roy C. Brooks & Enon Roy C. Brooks & Wichita Race and Enon Westbound Race & Enon Northbound Race & Enon Southbound	Completed	Bought and replaced all faulty lights. 11/1/23
5/9/2023 23:46:07	Dispatch/Teresa	Police Department	Computer/IT	Requesting login credentials for Forest hill cameras, the monitor updated and system restarted.	In Progress	
5/10/2023 13:50:59	Jared Quintero	720 VAUGHN AVE	Street Maintenance (including signs)	A big hole in the street and her Driveway	Completed	9/19/23

5/11/2023 15:11:58	Bobby Pender	Unit 123	Vehicle/Fleet	Came in on 05/10 to find the front push bumper rubber was offset on one side like the push bumper had been used. The push bumper was loose. Only needs tightening. Verified with Cpl. Bolliger. The windshield washer fluid tank was filled completely at the beginning of the shift. Upon getting fuel at the end of shift, the tank was almost completely empty if not empty. The fluid was actively leaking on the ground underneath the tank. In addition, it is missing the cap. The tank needs to be replaced. Confirmed on Bodycam.	Completed	Taken to Bruce Lowrie
5/12/2023 14:05:43	Jared Quintero	The entire road of Wichita St all the way to the Freeway 20	Street Maintenance (including signs)	A lot of Pot holes	Completed	This is not our jurisdiction
5/13/2023 9:10:44	randy harris	Dispatch	Computer/IT	The new Utility5 wifi network has a weak signal and very low speeds less than 5mbps	In Progress	
5/14/2023 7:43:31	ERICA SOTO	SWITCH BOX FOR KEYBOARD AND MOUSE	Computer/IT	NEAR CONSOLE 6319	In Progress	
5/15/2023 12:13:27	Scott Dabbs	Corner of W Trammell and N Race St	Landscaping	The trees and shrubs at the city owned house, on the corner of W Trammell and N Race Street, are blocking view of the stop sign. You can't see the stop sign until you're almost on top of it.	Completed	
5/16/2023 13:26:50	Craig Spencer	Roy C Brooks	Street Maintenance (including signs)	Appears that a vehicle lost control, ran off the roadway, and ran over a speed limit sign.	Completed	6/14/23
5/20/2023 21:18:51	SGT J. THOMPSON	PITTMAN BASKETBALL COURT	BASKETBALL COURT LIGHTS	BASKETBALL COURT LIGHTS DO NOT COME ON AT NIGHT	Completed	
5/24/2023 13:44:38	Jared Quintero	433 Chambers Creek Dr	Street Maintenance (including signs)	Tree branch about to fall to the street, the branch is soo low that the firetruck would not go thru	Completed	
5/25/2023 10:36:04	Jared Quintero	700 block Heathcliff	Street Maintenance (including signs)	Tree branches are covering the street light, making it difficult to know if it is green or red.	Completed	Completed 723 and 717 Heathcliff whice was the worse ones. Everything else was decent. If I missed something let me know to take care of it.
5/26/2023 20:40:27	L. RAPER 716	JAIL CELL PHONES	Computer/IT	Jailers have sent over an email stating that 2 of the male jail cell phones are not working. Cell 53 and Seg 103.	In Progress	
5/27/2023 19:14:23	Erica Soto	MONITOR 4 CONSOLE 6319	Computer/IT	MONITOR 4 CONSOLE- BLACK SCREEN	In Progress	
5/28/2023 6:59:20	Randy Harris	Dispatch	Computer/IT	A Pos 4 CAD monitor is not connecting, leaving the CAD with only three functioning monitors	In Progress	
6/1/2023 12:43:18	Windy McGarrey	Police Department Sallyport	Building Maintenance	While outside I noticed a roller on the ground from the west sallyport door. I looked up and noticed one of the hinges broke in half. The door may cave in.	In Progress	
6/2/2023 7:02:54	Windy McGarrey	Police Department	Building Maintenance	The air conditioner is not working in the main building nor the jail.	Completed	Ac Company went out and repaired
6/2/2023 9:01:14	Jared Quintero	501 Georgetown Dr right in the ir	Street Maintenance (including signs)	Big hole in front of her house	Completed	7/11/23
6/2/2023 20:27:20	Ashley Bolliger	Pittman Park	Basketball courts	Lights at the basketball courts are going out.	Completed	
6/5/2023 7:07:37	Erica Soto	KUV SWITCH NEAR CONSOLE	Computer/IT	THE KUV SWITCH IS NOT RECOGNIZING ANY USB CONNECTED. KEYBOARD/MOUSE NOT WORKING.	In Progress	
6/5/2023 11:42:24	Jared Quintero	405 and 401 Christie Ave	Street Maintenance (including signs)	Street cracked and sometimes there is water visible	Completed	Have investigated no water leak
6/5/2023 19:53:03	Laura L Lopez	Communications POS4	Computer/IT	Epson scanner not connecting again. Made several attempts at correcting the problem unsuccessfully. PDF files still closing out on working computer. Unable to bring up a PDF file and read it. I can PRINT them if I'm fast enough, but the box comes up wanting me log on to my Adobe account in which I have none and will not be purchasing said program for my personal use. Several attempts with City Manager/Chief Spencer upon first submitting request were also unsuccessful. Switcher for TLETS / Working Computer is no longer working again.	In Progress	
1/29/2023 0:28:39	Jon Dezaruba	Fire Department	Computer/IT	Printers in day room not printing, IT issue.	Completed	
2/15/2023 2:40:53	TROY SCHRADER	PATROL 2 COMPUTER	Computer/IT	LOCAL DISC MEMORY IS FULL. PROBLEMS WITH LOOKING AT ATTACHMENTS FROM EMAILS DUE TO IT.	Completed	

3/11/2023 17:00:54	TROY SCHRADER	#126	Vehicle/Fleet	BATTERY FOR IN CAR MIC DOESN'T LAST AS LONG AND IS MISSING CLIP.	Completed	Belt clip replaced.
3/29/2023 15:02:17	WINDY MCGARREY	Mens Restroom	Building Maintenance	The men's bathroom sink near patrol is leaking water onto the floor. There is a large puddle there.	Completed	
4/3/2023 19:05:38	Pender #271	Patrol Unit 127 - Police Department	Vehicle/Fleet	Brakes squealing/grinding, Ignition coil misfire (check engine light)	Completed	Brakes replaced and no codes were found. back in service-190
4/27/2023 15:39:58	Ofc. Bobby Pender #271	Unit #122	Vehicle/Fleet	Take down emergency equipment flickering when activated	Completed	Issue would not replicate with siddons tech
5/1/2023 9:01:52	Irene Medina	517 edna ct	Street Maintenance (including signs)	pot holes on edna ct in front of 517 edna ct	Completed	5/26/23
5/10/2023 11:35:11	Jared Quintero	Shelby Dr and Forest Hill Dr	Street Maintenance (including signs)	Pot holes making traffic in the intersection	Completed	5/26/23
5/24/2023 12:34:41	Tyler Peel	Everman Pkwy and S Race St	Street Maintenance (including signs)	Pothole	Completed	5/26/23
5/25/2023 12:25:58	Cynthia Newell	500 blk Edna Ct	Street Maintenance (including signs)	Residents complaining about pot holes all over Edna Ct	Completed	Took care of all the ones we saw. There is a few that may pop up soon if it keeps on raining.
1/28/2023	Gilbert Ramirez	Peppermill & Deer Creek Rd	Street Maintenance (including signs)	Pothole in the middle of the street	Completed	
3/11/2023 18:54:29	TROY SCHRADER	837 COURY AND CHRISTPOHER	Street Maintenance (including signs)	LARGE POT HOLE	Completed	
3/23/2023 8:46:09	Jon Dezaruba	Fire Department	Computer/IT	Wifi continues to crash even after resetting router.	Completed	User error
4/4/2023 19:27:53	TROY SCHRADER	UNIT 126	Vehicle/Fleet	BRAKES STARTING TO SQUEEL CONSTANTLY. BELIEVE ITS TIME FOR NEW BRAKES.	Completed	Vehicle taken to Gault's and brake job completed.
4/28/2023 8:16:27	Resident	Kelly and Christie Ct	Street Maintenance (including signs)	Big hole, Pot holes	Completed	
3/11/2023 18:41:40	TROY SCHRADER	516 EDNA CT	Street Maintenance (including signs)	MULTIPLE SMALL, MED, LARGE POT HOLES IN ROADWAY.	Completed	Actually the multiple Small potholes are at 500 EdnaCt and Celeste St, those are done, the one
4/14/2023 21:38:01	L Lopez	Jailer Office / Old Dispatch	Building Maintenance	Jailer came into dispatch advising that the office was unusually hot. Said the thermostat in hallway set on 68, yet the temperature was showing 75 degrees in hallway.	Completed	Ac Company inspected the system low on freon has been fixed
4/15/2023 10:35:48	Windy McGarrey	Air Conditioner - Main Building	Building Maintenance	I don't believe the air conditioning is working in the main building. It is warm out there. The thermostat is set at 68 since yesterday but reads to be 74 in the building.	Completed	Ac Company inspected the system low on freon has been fixed
3/24/2023 10:07:20	ESOTO 717	PD BACK DOOR NEAR PATROL ROOM	Building Maintenance	PD BACK DOOR NOT CLOSING SINCE LAST NIGHT 3/23/23 7PM	Completed	Has been checked found nothing wrong with the door
1/28/2023	Laurent Raper	Police Department	Building Maintenance	North Gate has not been closing since the cold weather week	Completed	Both gates can be open
2/3/2023 10:33:59	Craig Spencer	City Hall	Building Maintenance	The glass window on the south side of the council chambers has a large crack in it from the ice storm. There is also a window in Susanne's office that has a crack in it. Need to be replaced.	Completed	Has been accomplished 4/28/2023
2/24/2023 8:33:14	CARLOS VELASQUEZ	Shelby and Georgetown UNIT 123. FRONT PASSENGER SIDE OF THE VEHICLE	Street Maintenance (including signs)	Pothole	Completed	4/3/23
2/28/2023 8:42:05	ENRIQUE MORADO	THOMPSON AND HEATEHR	Vehicle/Fleet	Unit 123 has a noticeable leak under the passenger side of the vehicle. reddish/brown color liquid	Completed	Taken to Bruce Lowrie
3/7/2023 19:48:14	TROY SCHRADER	CHRISTIE CT & KELLEY	Street Maintenance (including signs)	MASSIVE POT HOLE IN INTERSECTION. LARGE, DEEP POT HOLE IN MIDDLE OF ROADWAY.	Completed	4/3/23
3/11/2023 18:37:18	TROY SCHRADER	500 EDNA CT	Street Maintenance (including signs)	TWO LARGE POT HOLES IN ROADWAY.	Completed	4/5/23
3/11/2023 18:40:31	TROY SCHRADER	COURY AT MICHAEL	Street Maintenance (including signs)	MULTIPLE MED/LRG POT HOLES.	Completed	4/13/23
3/11/2023 18:50:25	TROY SCHRADER	1101 COURY RD EVERMAN TX	Street Maintenance (including signs)	BIG POTHOLE ON STREETSIDE OF DRIVEWAY	Completed	4/5/23---2 Potholes
3/14/2023 14:10:46	BRENDA RODRIGUEZ				Completed	4/5/23
1/29/2023 16:49:21	Craig Spencer	Everman Police Department	Building Maintenance	There has been a significant amount of construction in the Police Department over the past year. As a result, there is a tremendous amount of dust and debris in the building. Would like to have all ducts professionally cleaned and filters replaced as soon as possible to limit the impact on employees.	Completed	C and S has been contacted they will give me a call.
3/11/2023 9:13:23	Randy Harris	Jail Office	Computer/IT	The camera system is not displaying for jail staff	Completed	Fixed by Spencer
3/17/2023 7:45:29	Windy McGarrey	PD	Computer/IT	Everman Pd Camera 15 shows to be disconnected.	Completed	Duplicate Report
3/19/2023 15:14:47	Randy Harris	PD Cameras	Computer/IT	The camera that looks towards the north gate is no longer working	Completed	Duplicate Report
1/29/2023 17:28:00	Craig Spencer	Dispatch	Computer/IT	Need ethernet cables ran from the old radio system (Telex) to Position 5 in order to hook-up the Telex radio console. This console is needed in order to activate the outdoor warning sirens and as a back-up radio position.	Completed	

2/5/2023 23:26:08	SGT J. Thompson	Unit 127	Vehicle/Fleet	The docking mount will not charge tablet. When you try and turn on the tablet you get the following error message. Alert! The AC power adapter wattage type cannot be determined. The battery may not charge. The system will adjust the performance to match the power available.	Completed	Vehicle is at Defender. They advised there was a loose pin and they had to order the part.
2/9/2023 19:05:30	C. Rhea # 258	Brazos Ticket Writers	Computer/IT	When issuing CTWs the Ticket writer populates White Settlement PD as the issuing agency and doesn't give any options to change it.	Completed	E-mail sent to Tyler Technologies.
2/12/2023 16:48:49	TROY SCHRADER	ROY C BROOKS	Street Maintenance (including signs)	40 MPH SIGN IN THE 600 BLK RCB, LETTERING AND NUMBERS ARE PEELING OFF.	Completed	3/15/23 Replaced both signs on the side of the new house construction side because both were peeling off.
2/27/2023 18:07:20	Doug Kilgore	1000 S Race	Street Maintenance (including signs)	Northbound school zone light inop.	Completed	3/15/23 Replaced New Assembly
2/6/2023 8:58:56	Susan Mackey	100 Blk N. Forest Hill Drive (southbound side)	Street Maintenance (including signs)	Large pothole - between doughnut shop & gas station. Very deep.	Completed	If is the one going southbound, and on the edge of the street to the right then its been taken care of.
2/10/2023 17:18:29	Roberto Alonzo	Unit 123	Vehicle/Fleet	passenger side light is out, as well as the light switch, when it's placed on auto the headlights don't come on, on unit 123	Completed	Headlight has been replaced.
1/28/2023	Mike Treppa	Pittman Park Ladies Room	Building Maintenance	UPON INSPECTING AND SECURING THE PARKS, I OBSERVED THE PITTMAN PARK LADIES RESTROOM HAD BEEN VIOLATED. BOTH TOILETS ARE PACKED WITH FECAL MATTER AND THE RR IS UNUSABLE IN IT'S CURRENT CONDITION. I LEFT THE RESTROOM LOCKED UNTIL THE MATTER CAN BE ADDRESSED BY THE APPROPRIATE PERSON.	Completed	Restroom is cleaned and ready to use. Finished on 2-7-23. Ready to be closed and open.
1/28/2023	Troy Schrader	Pittman Park Men's Bathroom	Building Maintenance	Sink inside men's bathroom was destroyed and the stall divider was also destroyed. Report was made, 22PD025730.	Completed	The sink has been replaced and is operational. Divider was fixed. Finished on 2-8-23. Ready to be closed and open everyday.
2/6/2023 9:00:20	Susan Mackey	Everman Public Library Parking Lot	Street Maintenance (including signs)	Parking stop is broken and pulled out into the parking space. It is located on the south side of the building.	Completed	2-9-23- Has been reposition to its correct location
2/6/2023 9:01:06	Craig Spencer	Everman Parkway (Eastbound) @ S. Race St	Street Maintenance (including signs)	Large pothole at the stop sign - main eastbound lane	Completed	2/7/23
2/6/2023 18:29:21	TROY SCHRADER	MEMORIAL PARK	PARKS	USAF AND EFD19 FLAGS WERE CONNECTED BY ONE LOOP. PULLY SYSTEMS FOR BOTH POLES FAILED/BROKE. FLAGS HAVE BEEN REMOVED TO BE STORED UNTIL THEY CAN BE PLACED ON FLAG POLES AGAIN. USAF IN SGT OFFICE, EFD AT FD.	Completed	2/10/23- Fixed broken pulley on Air Force flag pole, Fixed rope in Police Dept flag, Fixed pulley on the Fire Dept flag.
1/29/2023 0:22:45	Jon Dezaruba	Fire Department	Phone System	LT Office phone not work with day room phone still needing to be connected.	Completed	02/02 - Technician will be on site Friday morning to resolve. 01/30 - Reported to National Telesystems Support - Ticket #409368
1/28/2023	Mike Treppa	Georgetown & Peppermill	Street Maintenance (including signs)	OVERHANGING LIMBS FROM 420 GEORGETOWN, WERE CLIPPED BY A DELIVERY TRUCK GOING THROUGH THE INTERSECTION SB ON GEORGETOWN @ PEPPERMILL. THE LIMBS WERE PULLED OUT OF THE ROADWAY AND PLACED ALONG THE CURB AT THE INTERSECTION, UNTIL THEY CAN BE REMOVED BY THE CITY CREW.	Completed	1/3/23 It has been investigated, and there are no limbs on the curb. Someone has picked them up.
1/29/2023 14:55:52	TROY SCHRADER #260	UNIT 126	Computer/IT	AVL IS MOSTLY EITHER DOWN OR ATTEMPTING TO LOCATE. AVL HAS ME IN HOUSTON AT THE CRIMES HQ WHEN SEARCHING LOCATION. SOMETIMES ITLL WORK THEN STOP DURING THE SHIFT OR WEEK. MY AVL IS MOSTLY THE ONE THAT DOESNT WORK WHEN OTHER UNITS AVL DO. HAVE BEEN AN ISSUE FOR SOMETIME.	Completed	01/31 - Sgt. Thompson sent an e-mail to CRIMES advising that the AVL seemed to have corrected itself. Will advise CRIMES if any further issues arise. 01/29 - Forwarded to CRIMES Help Desk for solution.
1/28/2023	Colby Rhea	Unit 122	Vehicle/Fleet	Front Push bumper is extremely loose	Completed	Vehicle was taken to Gault's Auto Shop and fixed. Front Push bumper is no longer loose
1/28/2023	Colby Rhea	PD Unit 120	Computer/IT	Need an aircard for wifi and fuel card that can be assigned to this unit	Completed	Fuel Card Ordered 01/28 - New air cards have arrived and will be programmed this next week
1/28/2023	James Thompson	Police Department	Computer/IT	The WiFi at the PD is not working	Completed	Doug replaced the router
1/28/2023	James Thompson	Wichita & Enon	Street Maintenance (including signs)	The pole with the Do Not Enter & Left Turn Only signs was hit by a vehicle and knocked over.	Completed	Pole & Signs were replaced by Public Works.
1/28/2023	T. Schrader #260	Unit 126	Vehicle/Fleet	Unit 126 does not have a fuel card assigned.	Completed	Replacement card ordered 01/28
1/30/2023 16:19:33	Phillip Rogers	Fire station Kitchen gas Range	Gas stove	Needing two new igniters for stove	Completed	Ordered 1/30/22 A-shift to complete install
2/13/2023 7:10:21	Doug Kilgore	Laptop Unit 125	Computer/IT	CAL 7 won't open. I need ASAP to run reports	Completed	Put in contact with CRIMES
3/7/2023 11:14:50	BRENDA RODRIGUEZ	Pittman Park	Building Maintenance	Restroom at Pittman Park has been locked for a couple of days.	Completed	Got them unlocked. Open for public.

3/23/2023 15:40:56	Linda Sanders	Georgetown & Shelby Rd	Street Maintenance (including signs)	Large Pothole in the intersection that needs to be filled.	Completed	4/3/23
3/27/2023 7:07:55	Pender	Unit #123-Engine Compartment	Vehicle/Fleet	Driver-side motor mount going out. Confirmed with Power-brake method. Slapped bottom of hood.	Completed	At Bruce Lowrie. Replaced motor mount
3/27/2023 9:13:59	Brenda Rodriguez	KELLY ST AND CHRISTI CT	Street Maintenance (including signs)	HUGE POT HOLE PER RESIDENT	Completed	4/5/23
3/31/2023 14:00:21	BRENDA RODRIGUEZ	3713 COLUMBINE AND 3717 COLUMBINE	Street Maintenance (including signs)	BIG POT HOLE AND STREET SIGN NOT READABLE	Completed	4/3/23
4/3/2023 14:51:51	TROY SCHRADER	1000 S RACE ST	Street Maintenance (including signs)	NB SCHOOL ZONE INDICATOR FLASHING LIGHT DOESN'T FLASH DURING HOURS.	Completed	4/3/23. The school zone light switch was off, but made sure time was programmed correctly just to be on safe side.
4/4/2023 17:53:04	TROY SCHRADER	PITTMAN PARK WALKING TRAIL	P.W, PARKS.	BENCH SEAT IS DISCONNECTED FROM THE FRAME. BENCH IS LOCATED ON THE WICHITA SIDE NEXT TO THE DRIVEWAY FOR THE CIVIC CENTER.	Completed	4/5/23 Missing bolts, but already taken care of.
4/8/2023 15:58:11	TROY SCHRADER	TICKET WRITERS	Computer/IT	ATTEMPTED TO LOGIN WITH 2 DIFFERENT LOGINS, BOTH TIMES IT SAID INVALID USERNAME/PASSWORD. ATTEMPTED SEVERAL TIMES.	Completed	Officers are able to log in now. They needed to put in the correct info to log in.
4/13/2023 7:39:20	Kilgore	School zone light at Forest Hill and Columbine	Street Maintenance (including signs)	School zone lights on Forest Hill and Columbine are inop. At least during the morning hours	Completed	4/17/23
5/6/2023 15:58:33	Bobby Pender #271	Patrol unit #126	Vehicle/Fleet	Dashcam monitor needs to be remounted in unit. Windshield washer fluid tank needs to be replaced. Cap missing and not holding fluids correctly.	Completed	Dashcam mount fixed. Washer fluid cap has been replaced. Tank is fine and hold fluid.
5/20/2023 4:00:40	Bolliger #270	Unit #126	Vehicle/Fleet	Passenger side headlight is out.	Completed	Replaced
5/20/2023 4:02:11	Bolliger #270	Patrol body cameras	Computer/IT	Body cam #8 only shows to be booting in the doc. It does not appear on watchguard to checkout.	Completed	Reset camera. It is now showing in the VISTA dashboard
5/21/2023 15:37:08	randy harris	PD Sally Port	Building Maintenance	Considerable amount of ANTS on the east side of the sally port along the outside wall working their way into the sally port. I was able to spray what I could with household ant spray	Completed	Poured some Ant Killer on 5/23/23
6/7/2023 14:56:12	Jared Quintero	In the intersection of Peppermill &	Street Maintenance (including signs)	Big pot hole	Completed	7/11/23
6/8/2023 5:14:47	Laurent Raper	Forest Hill Public Works	Building Maintenance	I've received two calls in the past 3 months from the Forest Hill PB Supervisor stating there has been alarms going off, but we haven't responded. He said that the Alarm Comp. is supposed to contact dispatch when an alarm goes off. We haven't received anything.		
6/8/2023 15:29:51	Jared Quintero	in the intersection Southway and	Street Maintenance (including signs)	Hard to miss 4 inch holes that has a lot of water running in the road.	Completed	Did not see 4 in potholes
6/10/2023 17:27:03	WINDY MCGARREY	PD -- JAIL	Building Maintenance	The AC in the jail is still not working. I was just advised by the staff that it is very hot and not coming on.	Completed	Fixed on 6/12/23 Ac guy came over to check it out and it got taken care off. Came back on 6-15-23 because it had issues again.
6/10/2023 17:32:45	ERICA SOTO	KUV SWITCH NEAR CONSOLE	Computer/IT	THE KUV SWITCH IS NOT RECOGNIZING ANY USB CONNECTED. KEYBOARD/MOUSE NOT WORKING.		
6/14/2023 14:37:12	Abdiel Quintero	410 Holley St	Street Maintenance (including signs)	There is a tree branch near the road.	Completed	Owner has to take care of it.
6/15/2023 7:01:20	Justin Zacek	Jail	Building Maintenance	AC appears to not be working or keeping up. Last night the jail was very warm and humid.	Completed	
6/18/2023 16:50:15	TROY SCHRADER	126	Vehicle/Fleet	WASHER FLUID PUMPS MIGHT BE OUT, FLUID IS TOPPED OFF BUT NOTHING SHOOTS OUT TO THE FRONT OR REAR WINDOW.		
6/18/2023 16:51:15	TROY SCHRADER	126	Vehicle/Fleet	WIPER BLADES NEED TO BE REPLACED, REQUESTING TO ORDER OR BUY FROM AUTOSTORE. THEYRE CRACKED AND STARTING TO DRY ROT.	Completed	Wiper blades replaced
6/18/2023 18:25:56	TROY SCHRADER	S FH DR @ SHELBY	Street Maintenance (including signs)	STOP SIGN ON S FH DR AT INTERSECTION IS FALLING OFF POLE.	Completed	6/23/23
6/20/2023 11:51:33	Griffin	109 Buie	Street Maintenance (including signs)	Resident Mr. Griffin came in to complain about huge pothole. said he spoke to Ramirez	Completed	
6/21/2023 9:11:46	Abdiel Quintero	900 block marlene dr	Street Maintenance (including signs)	There's a lot of water in the street and there may be a water leak	Completed	
6/24/2023 16:37:52	Troy Schrader	Police Bike	Bikes	Kick stand is broken. Doesn't keep bike up, stand is bent forward.		
6/25/2023 18:36:47	Troy Schrader	Patrol Bike	Bicycle	Carrier rack, a locking nut/screw had fallen off while in use at Celebrate America. Rack rod is zip tied to prevent it from rubbing on tire.		

6/27/2023 12:58:13	William Glock	Police department, rear door	Building Maintenance	The back door no longer closes properly. In order for the door to latch, you either have push on the door or pull on the door for it to fully close. I'm not sure if the door closer needs to be adjusted, or if the door is catching on the door frame.	Completed	Double checked the door and seems to be working fine now, maybe is the building moving a bit when the ground shifts. 10/16/23
6/28/2023 7:14:27	Windy McGarrey	BELL AND RACE ST	Street Maintenance (including signs)	DO NOT ENTER SIGN HAS BEEN KNOCKED DOWN PER E221	Completed	7/5/23
6/28/2023 9:08:34	Jared Quintero	Corner block of 3752 Columbine	Street Maintenance (including signs)	The side of the road is caved in and there is no parking spaces nor space for cars to go thru		
6/28/2023 15:58:23	Abdiel Quintero	Ridge and Georgetown	Street Maintenance (including signs)	There is a leak on the street on the corner of Ridge and Georgetown.	Completed	Super minor lead, sometimes due to movement it causes leak and sometimes its dry.
6/29/2023 8:03:26	Jared Quintero	1001 Marlene, both sides of the	Street Maintenance (including signs)	There is water flowing from 1001, 1005, etc	Completed	
6/29/2023 14:25:51	Scott Dabbs	Southeast corner N. Race St at V	Street signage	Unknown person(s) knocked over the Do Not Enter street sign at the corner of N Race and W Bell St.	Completed	7/5/23
6/29/2023 14:27:43	Scot Dbbs	Computer	Computer/IT	Unable to access shared (Y) drive from my computer.		
6/30/2023 8:09:38	Jared Quintero	in the corner of Bluebell drive at	Street Maintenance (including signs)	Speed limit sign is in the ground due to someone running over it last night.	Completed	7/17/23
6/30/2023 15:57:13	Windy	dispatch	Computer/IT	The new computer set up at POS-5 has a monitor malfunctioning. It looks like it has starburst across the screen. The screen on the bottom right.		
7/1/2023 7:46:46	WINDY	forest hill dr near blue bell	Street Maintenance (including signs)	SPEED LIMIT SIGN DOWN	Completed	7/17/23
7/7/2023 2:50:39	ERICA SOTO	CAMERAS	Computer/IT	EVERMAN SECURITY CAMERAS ALL CAMERAS OUT FOR ABOUT 30 MINUTES. IT KEEPS SAYING IT WILL RECONNECT BUT THEN SAYS UNABLE TO CONNECT.		
7/7/2023 3:02:02	ERICA SOTO	CONSOLE ID 6320 MONITOR 3	Computer/IT	MONITOR 3 IS COMPLETELY BLACK		
7/8/2023 10:08:32	WINDY MCGARREY	DISPATCH	Computer/IT	The printer in dispatch is making a semi loud ringing noise when it is actively printing. Also just in case, we still can't scan.		
7/8/2023 16:01:07	C. Rhea	Patrol computer	Computer/IT	CPL Patton ad an issue downloading media via USB on the patrol computers. I am unable to login to Windows due to a password issue.		
7/8/2023 18:50:26	WINDY MCGARREY	police	Computer/IT	The cameras keep going out. when you go in to restart the system it says there is something going on with the files or hard drive. It may crash soon.		
7/10/2023 9:43:02	Scott Dabbs	Computer	Computer/IT	Need software install for Dymo Label Writer 550. Software already downloaded from site, but administrator required for install.		
7/10/2023 23:41:53	SGT J. THOMPSON	Wichita @ West exit for Civic Ce	Street Maintenance (including signs)	Stop sign at the west exit for the Civic Center has been knocked down.	Completed	7/17/23
7/11/2023 14:39:07	Abdiel Quintero	520 ANDENWOOD CT	Street Maintenance (including signs)	There's 2 big pot holes in front of the residents home.	Completed	7/27/23
7/13/2023 6:05:04	Officer B. Pender #271	Engine Compartment - Battery	Vehicle/Fleet	Battery is emitting a rotten egg smell which is generally associated with needing a battery replacement.		
7/13/2023 16:08:26	Abdiel Quintero	King St and Holley St	Street Maintenance (including signs)	There's a water leak in the corner of King and Holley St	Completed	
7/17/2023 22:46:51	SGT THOMPSON	Civic Center	Building Maintenance	Window on westside of building shattered.	Completed	Replaced
7/19/2023 22:53:31	Loy Raper #716	NW Ballroom door	Building Maintenance	NW Ballroom door is not entirely locking. Officers were able to open the door with ease after dispatch remotely locked it. CPL Bolliger #270 also mentioned there is a wasp nest next to the door as well.	Completed	
7/21/2023 22:03:55	ERICA SOTO	JAIL A/C NOT FUNCTIONING	Building Maintenance	JAIL ADVISED THAT THE A/C UNIT IS NOT WORKING AND ITS GETTING VERY HOT OUT THERE.	Completed	
7/22/2023 2:02:04	B Pender #271	Unit #127	Vehicle/Fleet	Check/Service Engine Light	Completed	Taken to C&A to have the check engine light checked.
7/25/2023 14:02:09	ENRIQUE MORADO	BACK PASSENGER AND FRONT	Vehicle/Fleet	BACK PASSENGER AND FRONT DRIVER TIRES REPLACED DUE TO NAIL DAMAGE.	Completed	Fixed
7/28/2023 8:20:51	Jared Quintero	In front of 624 Windsor St	Street Maintenance (including signs)	A tree branch fell off in the road.	Completed	
7/28/2023 10:44:48	Jared Quintero	Water Hydrant on the corner of F	Water Hydrant	The Water Hydrant is leaking a lot	Completed	08-06-23 11 A.M called in and took care of it.
7/31/2023 15:48:56	721 vaughn ave	vaughn and floyd	Street Maintenance (including signs)	pothole in front of the property	Completed	9/19/23
8/2/2023 13:04:36	Al Brooks	PD	Building Maintenance	Gate latch on west side of PD is broken	Completed	
8/2/2023 18:23:03	R. Alonzo #221	Police Patrol Unit #123	Vehicle/Fleet	Brakes need maintenance. Starting to squeak.	Completed	Taken to Bruce Lowrie
8/2/2023 18:49:54	Al Brooks	PD	Building Maintenance	Gate latch on west side of PD is broken	Completed	
8/3/2023 11:52:19	resident	shelby and enon	Street Maintenance (including signs)	huge pot hole on enon and forest hill	Completed	8/17/23

8/7/2023 11:15:07	Jared Quintero	220 Buie Dr sidewalk	Street Maintenance (including signs)	The resident states the sidewalk in front of his yard has bumps and hills making big cracks and hard to walk thru there.		
8/8/2023 17:25:08	Troy Schrader	Unit 126	Vehicle/Fleet	Check engine light flash. Engine cylinder one misfire. Was confirmed by C & A inspection by OBD2 scanner.	Completed	Taken to Bruce Lowrie
8/9/2023 8:37:09	Jared Quintero	417 Chambers CK DR SO the st	Street Maintenance (including signs)	The resident stated there is a pot hole that is growing in the street in front of her driveway.	Completed	8/22/23
8/9/2023 12:33:06	Robinson	Animal control	Building Maintenance	Air conditioner leaking into hallway.	Completed	Unclogged the drain pan which was full and leaking, any Problems let us know.
8/10/2023 3:28:42	Jeremy Joiner	PD Kitchen	Building Maintenance	The water filters in the Dispatchers and Officers refrigerators need replaced, down to 3% life left. Part number is GE filter XWFE	Completed	8/24/23
8/14/2023 21:51:48	Troy Schrader	Unit #127	Vehicle/Fleet	Large coolant leak, leaked all of the coolant out of vehicle.	Completed	Taken to Bruce Lowrie
8/16/2023 12:39:06	Jared Quintero	Between Thompson St and Tran	Street Maintenance (including signs)	A tree branch fell in the side of the road, resident wants it to be removed.	Completed	8/17/23
8/19/2023 18:09:16	LAURENT RAPER	CIVIC CENTER - MOTION DETE	Computer/IT	LOW BATTERY DETECTION IN THE NORTH BALLROOM MOTION DETECTOR	Completed	8/21/23
8/22/2023 8:33:31	C. Rhea	119	Vehicle/Fleet	Back passenger tire flat, changed to spare.		
8/22/2023 9:39:45	Jared Quintero	Between Coury Rd and when yo	Street Maintenance (including signs)	There is a Pot Hole Between these streets very hard to not miss them.	Completed	10/31/23
8/22/2023 16:00:06	Troy Schrader	Unit 122	Vehicle/Fleet	AC was cam charged 08/21/23, took about 20 or so minutes to have cold air. Was cold for maybe several hours and then started to warm up. Air continued to be a warm/cool all the way till end of shift at 0300 at almost full at the lowest temp possible. 08/22/23, took approximately 10 minutes to cool down, does not push cold air but warm/cool air.	In Progress	At Bruce Lowrie
8/26/2023 0:03:37	LAURENT RAPER	NW BALLROOM DOOR	Building Maintenance	NW BALLROOM DOOR NOT SECURING AND SENSOR BROKEN	Completed	8/28/23- The Door lock secures, the sensor is being trigger by doors not being even caused by sun or building shifting, which is normal, they are about 1/8 to 1/4 offset, which with small movement will trigger motion sensors.
8/26/2023 6:19:37	A. Bolliger	Unit #127	Vehicle/Fleet	Front suspension is popping when turning the vehicle	Completed	Taken to Bruce Lowrie
8/29/2023 2:47:31	Randy Harris	Dispatch	Computer/IT	Position 3 CAD freezing up more and more, restart takes 5-10 minutes. Seems to freeze up more after midnight each night		
9/4/2023 10:29:44	Colby Rhea	Network	Computer/IT	Changed my password, but something went work and it doesn't recognize my new or old password now. Can you reset it ASAP please!		
9/11/2023 16:29:31	Abdiel Quintero	509 Holley ST	Street Maintenance (including signs)	There is water flowing in the street in front of 509 Holley St	Completed	
9/13/2023 14:27:48	Colby Rhea	119 laptop	Computer/IT	NetMobility is not installed on my laptop after Windows re-installed		
9/13/2023 22:08:22	Jon Dezaruba	Fire Department	Computer/IT	Internet LAN connection not working in dayroom under table or wall under projector.		
9/14/2023 9:42:11	Jared Quintero	In the corner of Deer creek and	Street Maintenance (including signs)	There are several pot holes that are making traffic due to trying to avoid it. It gets worse when it rains, because it fills up with water	Completed	10/19/23
9/15/2023 10:09:46	Jared Quintero	In the corner of Michael Dr and F	Huge piece of metal on the road	There is a huge piece of metal that may give a flat tire to a car, a neighbor put the broken metal piece to the side of the street.	Completed	9/19/23 - Did not see anything on the road, residents probably took care of it.
9/19/2023 11:22:02	Colby Rhea	Laptop for unit 119	Computer/IT	After updating Windows, I found that the application for NetMobility did not redownload. Due to this I have been unable to connect to the internet and complete reports on my assigned laptop.		
9/22/2023 9:56:50	Abdiel Quintero	Christopher and Marlene	Street Maintenance (including signs)	There's a big pot hole on Marlene and Christopher		
9/22/2023 14:25:22	Jared Quintero	404 Steeple Ridge Rd in front of	Street Maintenance (including signs)	There is a big pot hole in front of her house that accumulates water.	Completed	10/19/23
9/25/2023 11:26:15	Abdiel Quintero	Coury Rd and W Enon	Street Maintenance (including signs)	There's a plot hole on the corner of Coury Rd and W Enon Ave	Completed	10/31/23
9/25/2023 15:17:52	Jared Quintero	School zone in front of Roger E.	Street Maintenance (including signs)	The school zone is not working properly and many people are speeding in the elementary school zone	Completed	9/26/23
9/27/2023 2:03:04	Laura Lopez	Women's Public Restroom / PD	Building Maintenance	Strong smell of sewer	Completed	10/3/23
10/5/2023 14:06:02	Jared Quintero	The creek near 441 Christie Ave	possible flood	Mr. Binion, lives in 441 Christie Ave, wants someone to take a look at the creek because it is completely stopped by trash, it is a miracle the bridge didn't overflow.	Completed	11/1/23 Taken Care off.

10/6/2023 9:55:58	Jared Quintero	Christie Ave and S Race St	Creek	Another resident is complaining about all the debris the creek has. The resident doesn't want the bridge to over flow or flood their neighborhood.	Completed	11/1/23 Taken Care off.
10/6/2023 15:39:57	Jared Quintero	the 4 stop intersection of Shelby	Street Maintenance (including signs)	The grass is tall that you cannot see Stop sign	Completed	10-18-23, Checked, already Mowed
10/6/2023 22:03:09	LAURENT RAPER	CIVIC CENTER - NORTH AND	Building Maintenance	PER 271 PENDEER, THE NORTH AND WEST BALLROOM DOORS ARE NOT LOCKING	Completed	10/17/23, Looks like its working good.
10/10/2023 9:19:57	Jared Quintero	624 Windsor side walk	Street Maintenance (including signs)	A tree damaged the sidewalk on 624 Windsor Dr		
10/10/2023 11:39:17	LAURENT RAPER	DISPATCH TV-K	Computer/IT	FH CAMERAS FROZEN, KEYBOARD AND MOUSE NOT WORKING EITHER		
10/10/2023 11:40:07	LAURENT RAPER	FH AVL	Computer/IT	FH AVL IS FROZEN, NO CHANGE IN COLOR, PINGS, ETC.		
10/10/2023 19:33:45	Troy Schrader	Patrol Room.	Computer/IT	Patrol 2 computer has full disk space, cannot download files.		
10/11/2023 6:28:48	SGT J. Thompson #235	N. Forest Hill & Columbine	Street Maintenance (including signs)	School zone sign/pole knocked down. Needs to be replaced. Once replaced need to contact Oncor to restore power.		
10/12/2023 19:14:17	Tyler Peel	Jail	Computer/IT	Cameras for jail staff not working in their office		
10/19/2023 13:26:26	Jared Quintero	Creek on S race St and Christie	Street Maintenance (including signs)	A resident says there is debris and logs in the creek	Completed	11/1/23 Taken Care off.
10/20/2023 16:39:48	Jared Quintero	plymouth and Buie	Street Maintenance (including signs)	Pothole that will mess up someone's car tires		
10/23/2023 15:24:48	Troy Schrader	Unit #126	Vehicle/Fleet	Check Engine light is on, went to C & A Inspection at 107 Wichita, code was read and said it was "P0358 Ignition coil H primary/secondary circuit".		
10/25/2023 9:31:00	Enrique Morado	SRO Morado Laptop	Computer/IT	I can not login my laptop. However I can login on dell computers at the Police Department.		
10/26/2023 15:11:48	Jared Quintero	Everman PKWY turns to Shelby	Street Maintenance (including signs)	A resident complained about the patch that was done like 3 or 4 months back, that the patch is too high and you need to dodge it or drive super slow to go over it.	Completed	11/1/23 Checked, Not our Jurisdiction its Fort Worth.
10/28/2023 22:31:40	ERICA SOTO	EVERMAN CIVIC CENTER-NW	Building Maintenance	NW BALLROOM DOOR NOT SECURING/ MOTION SENSOR NOT WORKING PROPERLY.		
11/1/2023 10:53:58	Clifford Thrasher	Body cam	Computer/IT	None of the body cameras work correctly.		
11/6/2023 14:27:19	Jared Quintero	500 block down to the 600 block	Street Maintenance (including signs)	A very big pot hole, not hard to miss where it is		



STORMWATER MANAGEMENT PROGRAM

ANNUAL REPORT FORM

MCM: **Illicit Discharge Detection and Elimination**

BMP Title: **Source Investigation and Elimination**

Responsible Department: Public Works

Measurable Goal: Year 4 – Conduct 100% of illicit discharge inspections.
Investigate 100% of illicit discharges reported.

1. Was the measurable goal accomplished for this permit year? Yes No
(a) If so, explain what was done to accomplish the measurable goal.

The City conducts regular maintenance throughout the City, but unfortunately did not record inspections.

(b) If not, why was the measurable goal not accomplished?

2. Was this BMP appropriate to meet the intended MCM(s)? Yes No
3. Was this BMP considered to be successful? Yes No
(a) Please explain.

The BMP is considered partially successful. The City understands the importance for residents to be informed on how to respond to a spill or an illicit discharge. Reporting and acting when discharges happen can result in minimizing pollution to lakes and streams.

4. Are any changes to this BMP recommended for the next permit term? Yes No
(a) If so, please explain.

5. Will a Notice of Change (NOC) be issued for this BMP? Yes No



STORMWATER MANAGEMENT PROGRAM

ANNUAL REPORT FORM

MCM: **Construction Site Stormwater Runoff Control**

BMP Title: **Erosion & Sediment Control Ordinance**

Responsible Department: Public Works

Measurable Goal: Year 4 – Inspect 100% of construction sites each year. Inspect 100% of complaints driven site each year.

1. Was the measurable goal accomplished for this permit year? Yes No
(a) If so, explain what was done to accomplish the measurable goal.

The City continues to enforce the construction erosion and sediment control ordinance. There has been no active construction of 1 acre or more in the City, and no reports were received.

- (b) If not, why was the measurable goal not accomplished?

2. Was this BMP appropriate to meet the intended MCM(s)? Yes No
3. Was this BMP considered to be successful? Yes No
(a) Please explain.

It is important for the City to be able to enforce the requirements for erosion and sediment control on construction sites. Proper stormwater practices on construction sites reduces the amount of pollution from site runoff.

4. Are any changes to this BMP recommended for the next permit term? Yes No
(a) If so, please explain.

5. Will a Notice of Change (NOC) be issued for this BMP? Yes No



STORMWATER MANAGEMENT PROGRAM

ANNUAL REPORT FORM

MCM: **Construction Site Stormwater Runoff Control**

BMP Title: **Construction Plan Review Procedures**

Responsible Department: Public Works

Measurable Goal: Year 4 – Administer the construction plan review process for 100% of new regulated construction projects.

1. Was the measurable goal accomplished for this permit year? Yes No
(a) If so, explain what was done to accomplish the measurable goal.

The City administered a review process for erosion and sediment control for civil plans of several new and redevelopment. The City engineer reviewed the Hanna Ranch subdivision, Carter Park East, Axiom Concrete Plant, and Carter Park Ice Cream Plant.

- (b) If not, why was the measurable goal not accomplished?

2. Was this BMP appropriate to meet the intended MCM(s)? Yes No
3. Was this BMP considered to be successful? Yes No
(a) Please explain.

It is important to ensure the City's erosion control plan review procedures are in compliance with the renewed TCEQ permit in order to prevent pollution.

4. Are any changes to this BMP recommended for the next permit term? Yes No
(a) If so, please explain.

5. Will a Notice of Change (NOC) be issued for this BMP? Yes No

Year 4

Construction Plan Review



The City reviewed the following construction plans:

Construction Plans:

1. Carter Park East
2. Hanna Ranch Phase 3
3. Hanna Ranch Phase 4
4. Axiom Concrete Plant
5. Carter Park Ice Cream Plant

Plan reviews are filed at the City of Everman. Plan reviews are available upon request.



STORMWATER MANAGEMENT PROGRAM

ANNUAL REPORT FORM

MCM: **Construction Site Stormwater Runoff Control**

BMP Title: **Construction Site Inspections and Enforcement**

Responsible Department: Public Works

Measurable Goal: Year 4 – Inspect 100% of construction sites each year. Inspect 100% of complaints driven site each year.

1. Was the measurable goal accomplished for this permit year? Yes No
(a) If so, explain what was done to accomplish the measurable goal.

There has been no active construction of 1 acre or more in the City for Year 4.

(b) If not, why was the measurable goal not accomplished?

2. Was this BMP appropriate to meet the intended MCM(s)? Yes No
3. Was this BMP considered to be successful? Yes No
(a) Please explain.

Implementing the erosion and sediment controls prevent pollutants from entering storm drains and waterways.

4. Are any changes to this BMP recommended for the next permit term? Yes No
(a) If so, please explain.

5. Will a Notice of Change (NOC) be issued for this BMP? Yes No

Overall Site Issues

BMP/Activity	Implemented?	Maintenance Required?	Corrective Action Needed & Notes (include location)
1. Have all disturbed areas requiring temporary or permanent stabilization been stabilized?	<input type="checkbox"/> Yes <input type="checkbox"/> No <input type="checkbox"/> N/A	<input type="checkbox"/> Yes <input type="checkbox"/> No	
2. Seeded? <input type="checkbox"/> Yes <input type="checkbox"/> No Mulched? <input type="checkbox"/> Yes <input type="checkbox"/> No Graveled? <input type="checkbox"/> Yes <input type="checkbox"/> No	<input type="checkbox"/> Yes <input type="checkbox"/> No <input type="checkbox"/> N/A	<input type="checkbox"/> Yes <input type="checkbox"/> No	
3. Are soil stock piles adequately stabilized with seeding and/or sediment trapping measures?	<input type="checkbox"/> Yes <input type="checkbox"/> No <input type="checkbox"/> N/A	<input type="checkbox"/> Yes <input type="checkbox"/> No	
4. Does permanent vegetation provide adequate stabilization?	<input type="checkbox"/> Yes <input type="checkbox"/> No <input type="checkbox"/> N/A	<input type="checkbox"/> Yes <input type="checkbox"/> No	
5. Have sediment trapping facilities been constructed as a first step in Land Disturbing Activities?	<input type="checkbox"/> Yes <input type="checkbox"/> No <input type="checkbox"/> N/A	<input type="checkbox"/> Yes <input type="checkbox"/> No	
6. For perimeter sediment trapping measures, are earthen structures stabilized?	<input type="checkbox"/> Yes <input type="checkbox"/> No <input type="checkbox"/> N/A	<input type="checkbox"/> Yes <input type="checkbox"/> No	
7. Are sediment basins installed where needed?	<input type="checkbox"/> Yes <input type="checkbox"/> No <input type="checkbox"/> N/A	<input type="checkbox"/> Yes <input type="checkbox"/> No	
8. Are finished cut and fill slopes adequately stabilized?	<input type="checkbox"/> Yes <input type="checkbox"/> No <input type="checkbox"/> N/A	<input type="checkbox"/> Yes <input type="checkbox"/> No	
9. Are on-site channels and outlets adequately stabilized?	<input type="checkbox"/> Yes <input type="checkbox"/> No <input type="checkbox"/> N/A	<input type="checkbox"/> Yes <input type="checkbox"/> No	
10. Do all operational storm sewer inlets have adequate inlet protection?	<input type="checkbox"/> Yes <input type="checkbox"/> No <input type="checkbox"/> N/A	<input type="checkbox"/> Yes <input type="checkbox"/> No	
11. Are stormwater conveyance channels adequately stabilized with channel lining and/or outlet protection?	<input type="checkbox"/> Yes <input type="checkbox"/> No <input type="checkbox"/> N/A	<input type="checkbox"/> Yes <input type="checkbox"/> No	

Overall Site Issues continued...

BMP/Activity	Implemented?	Maintenance Required?	Corrective Action Needed & Notes (include location)
12. Is in-stream construction conducted using measures to minimize channel damage?	<input type="checkbox"/> Yes <input type="checkbox"/> No <input type="checkbox"/> N/A	<input type="checkbox"/> Yes <input type="checkbox"/> No	
13. Are temporary stream crossings of non-erodible material installed where applicable?	<input type="checkbox"/> Yes <input type="checkbox"/> No <input type="checkbox"/> N/A	<input type="checkbox"/> Yes <input type="checkbox"/> No	
14. Is necessary restabilization on in-stream construction complete?	<input type="checkbox"/> Yes <input type="checkbox"/> No <input type="checkbox"/> N/A	<input type="checkbox"/> Yes <input type="checkbox"/> No	
15. Are utility trenches stabilized properly?	<input type="checkbox"/> Yes <input type="checkbox"/> No <input type="checkbox"/> N/A	<input type="checkbox"/> Yes <input type="checkbox"/> No	
16. Are soil and mud kept off public roadways at intersections with site access roads?	<input type="checkbox"/> Yes <input type="checkbox"/> No <input type="checkbox"/> N/A	<input type="checkbox"/> Yes <input type="checkbox"/> No	
17. Have all temporary control structures that are no longer needed been removed?	<input type="checkbox"/> Yes <input type="checkbox"/> No <input type="checkbox"/> N/A	<input type="checkbox"/> Yes <input type="checkbox"/> No	
18. Have all control structures repairs and sediment removal been performed?	<input type="checkbox"/> Yes <input type="checkbox"/> No <input type="checkbox"/> N/A	<input type="checkbox"/> Yes <input type="checkbox"/> No	
19. Are properties and waterways downstream from development adequately protected from Erosion and sediment deposition due to increases in peak stormwater runoff?	<input type="checkbox"/> Yes <input type="checkbox"/> No <input type="checkbox"/> N/A	<input type="checkbox"/> Yes <input type="checkbox"/> No	



STORMWATER MANAGEMENT PROGRAM

ANNUAL REPORT FORM

MCM: **Construction Site Stormwater Runoff Control**

BMP Title: **Construction Stormwater Training**

Responsible Department: Public Works

Measurable Goal: Year 4 – Conduct annual construction stormwater training at least once a year for designated City staff and new hires.

1. Was the measurable goal accomplished for this permit year? Yes No
(a) If so, explain what was done to accomplish the measurable goal.

(b) If not, why was the measurable goal not accomplished?

The City of Everman did not conduct construction stormwater training for designated staff or new hires. The City will conduct construction stormwater training in Year 5.

2. Was this BMP appropriate to meet the intended MCM(s)? Yes No
3. Was this BMP considered to be successful? Yes No
(a) Please explain.

City understands the importance of properly educating and training on construction stormwater to prevent stormwater pollution from active construction sites.

4. Are any changes to this BMP recommended for the next permit term? Yes No
(a) If so, please explain.

5. Will a Notice of Change (NOC) be issued for this BMP? Yes No



STORMWATER MANAGEMENT PROGRAM

ANNUAL REPORT FORM

MCM: **Post-Construction Stormwater Management in New Development and Redevelopment**

BMP Title: **Post-Construction Ordinance**

Responsible Department: Public Works

Measurable Goal: Year 4 – Investigate 100% of post-construction violations or complaints.

1. Was the measurable goal accomplished for this permit year? Yes No
(a) If so, explain what was done to accomplish the measurable goal.

The City continues to implement and enforce the post-construction ordinance. There have been no incidents to report.

- (b) If not, why was the measurable goal not accomplished?

2. Was this BMP appropriate to meet the intended MCM(s)? Yes No
3. Was this BMP considered to be successful? Yes No
(a) Please explain.

It is important the City be able to enforce the post-construction requirements for new development, and renewed development sites, so that stormwater pollutants are reduced for long term.

4. Are any changes to this BMP recommended for the next permit term? Yes No
(a) If so, please explain.

5. Will a Notice of Change (NOC) be issued for this BMP? Yes No



STORMWATER MANAGEMENT PROGRAM

ANNUAL REPORT FORM

MCM: **Post-Construction Stormwater Management in New Development and Redevelopment**

BMP Title: **Long-Term Maintenance of Post-Construction BMPs**

Responsible Department: Public Works

Measurable Goal: Year 4 – Implement maintenance plans for new owners or operators once post-construction BMPs is installed.

1. Was the measurable goal accomplished for this permit year? Yes No
(a) If so, explain what was done to accomplish the measurable goal.

The City has developed requirements for long-term maintenance and operations. However, there have been no construction of post-construction BMPs.

- (b) If not, why was the measurable goal not accomplished?

2. Was this BMP appropriate to meet the intended MCM(s)? Yes No
3. Was this BMP considered to be successful? Yes No
(a) Please explain.

It is important to maintain long-term BMPs as per City criteria to ensure proper drainage and prevent stormwater pollution.

4. Are any changes to this BMP recommended for the next permit term? Yes No
(a) If so, please explain.

5. Will a Notice of Change (NOC) be issued for this BMP? Yes No



STORMWATER MANAGEMENT PROGRAM

ANNUAL REPORT FORM

MCM: **Pollution Prevention and Good Housekeeping for Municipal Operations**

BMP Title: **Facility and Stormwater Control Inventory**

Responsible Department: Public Works

Measurable Goal: Year 4 – Maintain an inventory of City-owned and operated facilities and stormwater controls and update as necessary.

1. Was the measurable goal accomplished for this permit year? Yes No
(a) If so, explain what was done to accomplish the measurable goal.

The City has prepared an inventory of City-owned and operated facilities in the MS4. The facilities list includes, parks, maintenance shops, fire departments, and more.

- (b) If not, why was the measurable goal not accomplished?

2. Was this BMP appropriate to meet the intended MCM(s)? Yes No
3. Was this BMP considered to be successful? Yes No
(a) Please explain.

Preparing and maintaining an inventory of City-owned facilities tracks possible sources or pollutants within the MS4.

4. Are any changes to this BMP recommended for the next permit term? Yes No
(a) If so, please explain.

5. Will a Notice of Change (NOC) be issued for this BMP? Yes No



City of Everman

Facility and Stormwater Control Inventory

Parks

Maintenance Shop

Fire Department

Police Department

Library

Shelby Well Lots

Animal Shelter

Annex/City Hall

PD Well Lot

High School Well Lot

Elevated Tank Site

Splash Pad



STORMWATER MANAGEMENT PROGRAM

ANNUAL REPORT FORM

MCM: **Pollution Prevention and Good Housekeeping for Municipal Operations**

BMP Title: ***Municipal Employee Training Program***

Responsible Department: Public Works

Measurable Goal: Year 4 – Provide annual municipal employee training at least once a year for designated staff and new hires.

1. Was the measurable goal accomplished for this permit year? Yes No
(a) If so, explain what was done to accomplish the measurable goal.

(b) If not, why was the measurable goal not accomplished?

The City of Everman did not conduct Municipal Employee training for designated staff or new hires. The City will conduct Municipal Employee training in Year 5.

2. Was this BMP appropriate to meet the intended MCM(s)? Yes No
3. Was this BMP considered to be successful? Yes No
(a) Please explain.

The City understands the importance of educating staff about pollution prevention and good housekeeping can reduce pollution and possible pollutants.

4. Are any changes to this BMP recommended for the next permit term? Yes No
(a) If so, please explain.

5. Will a Notice of Change (NOC) be issued for this BMP? Yes No



STORMWATER MANAGEMENT PROGRAM

ANNUAL REPORT FORM

MCM: **Pollution Prevention and Good Housekeeping for Municipal Operations**

BMP Title: **Contractors Requirements and Oversight**

Responsible Department: Public Works

Measurable Goal: Year 4 – Implement contract requirements to new contractors. Maintain contract with current contractors and revise as necessary.

1. Was the measurable goal accomplished for this permit year? Yes No

(a) If so, explain what was done to accomplish the measurable goal.

The City has contractual agreements in place for contractors to comply with the City's stormwater requirements. However, the City only hire contractors for emergency maintenance only.

(b) If not, why was the measurable goal not accomplished?

2. Was this BMP appropriate to meet the intended MCM(s)? Yes No

3. Was this BMP considered to be successful? Yes No

(a) Please explain.

It is important to implement contractual requirements to ensure that contractors are using appropriate control measures and standard operating procedures when working within the MS4.

4. Are any changes to this BMP recommended for the next permit term? Yes No

(a) If so, please explain.

5. Will a Notice of Change (NOC) be issued for this BMP? Yes No



STORMWATER MANAGEMENT PROGRAM

ANNUAL REPORT FORM

MCM: **Pollution Prevention and Good Housekeeping for Municipal Operations**

BMP Title: ***Municipal Operation and Maintenance Activities***

Responsible Department: Public Works

Measurable Goal: Year 4 – Inspect 100% of municipal operations and facilities once a year.

1. Was the measurable goal accomplished for this permit year? Yes No
- (a) If so, explain what was done to accomplish the measurable goal.

(b) If not, why was the measurable goal not accomplished?

Unfortunately, the City did not conduct an assessment of municipal operations and facilities.

2. Was this BMP appropriate to meet the intended MCM(s)? Yes No
3. Was this BMP considered to be successful? Yes No
- (a) Please explain.

The BMP is considered unsuccessful because the City did not conduct inspections for municipal facilities or operations. The City understands the importance of developing pollution prevention measures for municipal O&M activities can reduce stormwater pollution within the MS4 facilities and maintenance.

4. Are any changes to this BMP recommended for the next permit term? Yes No
- (a) If so, please explain.

5. Will a Notice of Change (NOC) be issued for this BMP? Yes No