

Phase II MS4 Annual Report

For



Stormwater Management Program
Year 5
(January 1, 2023 – December 31, 2023)
Permit Authorization Number: TXR040103

Prepared For



Texas Commission on Environmental Quality

March 2024

Prepared By



5237 N. Riverside Drive, Suite 100
Fort Worth, TX 76137
(817) 336-5773

TNP PROJECT # EVR 22142



Phase II MS4 Annual Report Form TPDES General Permit Number TXR040000

A. General Information

Authorization Number: TXR040103

Reporting Year: Year 5

Annual Report Year: Calendar Year

Beginning and End Dates: January 1, 2023 – December 31, 2023

MS4 Operator Level: Level 1

Name of MS4/Permittee: City of Everman MS4

Contact Name: Mr. Gilberto Ramirez, Director of Public Works

Telephone Number: 817-293-0525

Mailing Address: 213 North Race Street
Everman, TX 76140

Email Address: gramirez@evermantx.net

A copy of the annual report was submitted to the TCEQ Region.

Yes

No

Region the annual report was submitted to: TCEQ Region 4.

B. Status of Compliance with the MS4 GP and SWMP (Part IV Section B.2(a))

1. Provide information on the status of complying with permit conditions: (TXR040000 Part IV.b.2)

	Yes	No	Explain
Permittee is currently in compliance with the SWMP as submitted to and approved by the TCEQ.	<input type="checkbox"/>	<input checked="" type="checkbox"/>	Progress has been made towards meeting the goal.
Permittee is currently in compliance with recordkeeping and reporting requirements.	<input type="checkbox"/>	<input checked="" type="checkbox"/>	Report is being submitted for Year 4 2022.
Permittee meets the eligibility requirements of the permit (e.g., TMDL requirements, Edward Aquifer limitations, compliance history, etc.).	<input type="checkbox"/>	<input checked="" type="checkbox"/>	Everman meets the eligibility requirements of the permit.
Permittee conducted an annual review of its SWMP in conjunction with preparation of the annual report.	<input checked="" type="checkbox"/>	<input type="checkbox"/>	Everman conducted an annual review of the City's SWMP.



Phase II MS4 Annual Report Form TPDES General Permit Number TXR040000

2. Provide a general assessment of the appropriateness of the selected BMPs. Use table below or attach a summary, as appropriate:

MCM	BMP	BMP is appropriate for reducing the discharge of pollutants in stormwater (yes or no). Explain.
1	Educational Brochures	Yes, educating the public about stormwater is an important part of reducing pollution that enters into stormwater runoff.
1	Park Cleanup	Yes, cleaning up litter, and educating residents about stormwater pollution reduces the amount of pollutants that may enter into storm drains.
1	Pet Waste Management	Yes, by teaching residents to pick up after their pets, the amount of bacteria entering local waterways can be decreased
1	Storm Drain Marking	Yes, a marker on the storm drains will remind residents that storm drains discharge directly to creeks and streams. This can and may prevent dumping and discharge of pollutants into the storm drain.
1	Youth Education	Yes, educating children about stormwater pollution increases awareness and reinforces what can be done to reduce it.
1	Stormwater Education	Yes, it is important to educate residents about the importance of the program.
1	SWMP Annual Review	Yes, it is important to review the program annually to ensure the program is clear, specific, and measurable.
2	Illicit Discharge Ordinance	Yes, regulating and enforcing illicit discharges is important in reducing pollution.
2	Storm Drainage Outfall Map	Yes, being able to easily identify the source of illicit discharges is vital to protecting stormwater quality.
2	Education & Training on Illicit Discharges	Yes, educating the City staff on identifying and taking corrective actions can eliminate future illicit discharges.
2	Public Reporting and Response Procedures	Yes, enabling citizens to report illicit discharges is very important for the City to locate and address the discharges in a timely manner.
2	Source Investigation & Elimination	Yes, determining the source of an illicit discharge is important in order to begin corrective actions and eliminate future discharges.



Phase II MS4 Annual Report Form

TPDES General Permit Number TXR040000

MCM	BMP	BMP is appropriate for reducing the discharge of pollutants in stormwater (yes or no). Explain.
3	Erosion and Sediment Control Ordinance	Yes, by allowing the City to enforce erosion and sediment control on construction sites, pollutants from stormwater runoff are reduced.
3	Construction Plan Review Procedures	Yes, by ensuring that construction sites are enacting appropriate erosion and sediment control BMPs.
3	Construction Site Inspections & Enforcement	Yes, performing the site inspections will ensure proper installation and maintenance of erosion and sediment controls and reduce transport of sediment load.
3	Construction Stormwater Training	Yes, stormwater pollution can be reduced by properly training staff to identify, report, and correct improper erosion control practices on construction sites.
4	Post-Construction Ordinance	Yes, allows the City to enforce post-construction and long term maintenance requirements, reducing the amount of pollution that might enter the storm drain from runoff.
4	Long-Term Maintenance of Post-Construction BMPs	Yes, developing long-term operation and maintenance requirements ensures that post-construction BMPs will be maintained according to the City's criteria.
5	Facility & Stormwater Control Inventory	Yes, maintaining an inventory of City-owned facilities and stormwater controls identifies facilities and controls of concern in order to establish pollution prevention measures and sources of pollution.
5	Municipal Employee Training Program	Yes, by training employees to identify, and properly record, and respond to any illicit discharges or illegal dumping around the city, stormwater pollution may be reduced.
5	Contractor Requirements & Oversight	Yes, developing contractual requirements will ensure that contractors are using appropriate control measures and standard operating procedures when working within the MS4.
5	Municipal Operation & Maintenance Activities	Yes, performing the assessment identifies possible pollutants and solutions to prevent pollution.



Phase II MS4 Annual Report Form TPDES General Permit Number TXR040000

3. Describe progress towards reducing the discharge of pollutants to the maximum extent practicable. Summarize any information used (such as visual observation, amount of materials removed or prevented from entering the MS4, or if required monitoring data, etc.) to evaluate reductions in the discharge of pollutants. Use a table or attach a narrative description as appropriate.

MCM	BMP	Information Used	Quantity	Units	Does BMP Demonstrate a Direct Reduction in Pollutants? (yes or no, explain)
1	Educational Brochures	City Event	1	Event	Yes, educating the public about stormwater pollution is an important part of the stormwater program.
1	Park Cleanup	Cleanup Event	0	Event	Yes, picking up litter is a direct reduction of pollutants
1	Pet Waste Management	City Event	1	Event	Yes, educating the public about stormwater pollution is necessary for a successful program.
1	Storm Drain Marking	Inlets Inspected	294	Inlets	Yes, by marking storm drains, it could deter residents/commercial businesses from putting waste down the storm drain, which leads to less pollution in the waterways.
1	Youth Education	Number of Educational Material Distributed	0	Educational Brochures	Yes, educating the youth on stormwater pollution is an important part of the stormwater program.
1	SWMP Annual Review	BMPs Reviewed	21	BMPs	Yes, reviewing the program and BMPs annually ensures the program is compliant with TPDES permit.
2	Illicit Discharge Ordinance	Number of Violations	1	Violations	Yes, the City needs to be able to enforce the ordinance to deter the public from putting pollutants in waterways.
2	Storm Drainage Outfall Map	Outfalls Mapped	100%	Outfalls	Yes, the BMP allows staff to easily track and respond to illicit discharges.
2	Education & Training on Illicit Discharges	Number of Training Attendees	10	Attendee	Yes, providing educational information allows the staff to identify and take corrective actions on illicit discharges.



Phase II MS4 Annual Report Form

TPDES General Permit Number TXR040000

MCM	BMP	Information Used	Quantity	Units	Does BMP Demonstrate a Direct Reduction in Pollutants? (yes or no, explain)
2	Public Reporting and Response Procedures	Number of Illicit Discharge Inspection	0	Illicit Discharge Inspection	Yes, public reporting allows the City to have a quicker response to any illicit discharges.
2	Source Investigation & Elimination	Number of Violations	1	Violations	Yes, it is important that the City follows proper procedures for addressing the source of an illicit discharge to prevent any future illicit discharges.
3	Erosion and Sediment Control Ordinance	Number of Construction Sites	0	Construction Inspections	Yes, placing requirements on construction sites reduces the amount of pollution in the storm drains from site runoff.
3	Construction Plan Review Procedures	Number of Construction Plans Reviewed	2	Construction Plans	Yes, it is important the City have proper review procedures to ensure that construction sites are enacting appropriate pollutant reducing BMPs.
3	Construction Site Inspections & Enforcement	Number of Construction Sites	0	Construction Inspections	Yes, it is important for the City to have proper inspection procedures to ensure the construction sites are complying the City's Erosion and Sediment Control Ordinance.
3	Construction Stormwater Training	Number of Training Attendees	0	Attendee	Yes, it is important that inspectors be trained such that they can identify and correct improper erosion control practices and prevent stormwater pollution from construction sites.
4	Post-Construction Ordinance	Number of Post-Construction Inspections	0	Post-Construction Inspections	Yes, requiring developers to install post-construction runoff control measures reduces the amount of pollution from the site long term
4	Long-Term Maintenance of Post-Construction BMPs	Number of Maintenance Plan Implemented	0	Maintenance Plans	Yes, developing long-term operation and maintenance requirements ensures post-construction BMPs will be maintained according to the City's criteria.



Phase II MS4 Annual Report Form

TPDES General Permit Number TXR040000

MCM	BMP	Information Used	Quantity	Units	Does BMP Demonstrate a Direct Reduction in Pollutants? (yes or no, explain)
5	Facility and Stormwater Control Inventory	Facilities & Stormwater Controls	12	Controls	Yes, it is important to identify City-owned facilities and stormwater controls in order to establish pollution prevention measures and sources of pollution.
5	Municipal Employee Training Program	Number of Training Attendees	10	Attendee	Yes, training the employees is important so that stormwater pollution may be prevented or reduced.
5	Contractor Requirements & Oversight	Number of Contractual Requirements	0	Contractual Requirements	Yes, implementing contractual requirements and oversight ensures that MS4-hired contractors are accountable to the MS4'd pollution reduction goals.
5	Municipal Operations & Maintenance Activities	Number of Inspections	0	Inspections	Yes, performing the assessment on municipal operations and maintenance activities identifies possible pollutants and will help develop standard operating procedures to reduce and minimize pollutant discharges.



Phase II MS4 Annual Report Form TPDES General Permit Number TXR040000

4. Provide the measurable goals for each of the MCMs, and an evaluation of the success of the implementation of the measurable goals.

MCM	Measurable Goal	Success
1	Provide brochures to the public at City facilities. Distribute brochures to at least one City event each year.	Partially Met Goal – The City distributed brochures at the National Night Out event, but they are currently not available at City Facilities
1	Advertise the cleanup at least once on the City's website.	Did Not Meet Goal – The City did not advertise a cleanup event this year.
1	Coordinate at least once annual cleanup event.	Did Not Meet Goal – The City did coordinate an annual cleanup event.
1	Provide educational material about pet waste at 1 City event annually.	Met Goal – The City provided information about Pet Waste Management at the National Night Out event.
1	Annually inspect 20% of marked inlets. Perform any maintenance.	Met Goal – the City inspected 294 inlets in Year 5.
1	Distribute educational material to local schools.	Did Not Meet Goal – The City did not provide educational material to local schools.
1	Post SWMP on City's website no later than 30 days after the approval date.	Met goal – The City has posted the SWMP on the website.
1	Post annual report on City's website no later than 30 days after the due date.	Met Goal – The City has posted the Year 4 Annual Report on the website.
1	Annually review SWMP to ensure compliance.	Met Goal – The City reviewed the program and deemed no changes necessary.
2	Conduct 100% of illicit discharge inspections.	Met Goal – No illicit discharges were reported from the public.
2	Investigate 100% of illicit discharges reported.	Met Goal – One illicit discharge occurred, the City reported it to TCEQ and followed up until it was resolved.
2	Annually update the storm drainage system maps as necessary.	Met Goal – 100% of the outfalls have been mapped.
2	Provide annual IDDE training at least once a year for designated City staff and new hires.	Met Goal – Annual IDDE training was conducted for designated City staff and new hires.
2	Investigate 100% of illicit discharges reported.	Met Goal – The City investigated 100% of illicit discharges reported.
2	Conduct 100% of illicit discharge inspections.	Met Goal – The City conducted 100% of illicit discharges inspections.
2	Investigate 100% of illicit discharges reported.	Met Goal – The City investigated 100% of illicit discharges reported.



Phase II MS4 Annual Report Form TPDES General Permit Number TXR040000

MCM	Measurable Goal	Success
3	Inspect 100% of construction sites each year.	Met Goal – There were no active construction sites greater than one acre in Year 5.
3	Inspect 100% of complaints driven site each year.	Met Goal – The City did not receive any construction complaints.
3	Administer the construction plan review process for 100% of new regulated construction projects.	Met Goal – The City engineer administered construction plan review for 2 new regulated construction projects.
3	Inspect 100% of construction sites each year.	Met Goal – There were no active construction sites greater than one acre in Year 5.
3	Inspect 100% of complaint driven site each year.	Met Goal – The City did not receive any construction complaints.
3	Conduct annual construction stormwater training at least once a year for designated City staff and new hires.	Did Not Meet Goal – The City did not conduct annual construction stormwater training.
4	Investigate 100% of post-construction violations or complaints.	Met Goal – There are currently no post-construction BMPs installed.
4	Implement maintenance plans for new owners or operators once post-construction BMPs is installed.	Met Goal – The City has requirements set in place for long-term maintenance and operations.
5	Maintain an inventory of City-owned and operated facilities and stormwater controls and update as necessary.	Met Goal – City maintains inventory of City-owned and operated facilities.
5	Provide annual municipal employee training at least once a year for designated staff and new hires.	Partially Met Goal – Good housekeeping training is partially included in the IDDE training, but needs to be more detailed.
5	Implement contractual requirements to new contractors.	Met Goal – The City has requirements set in place for contractors. However, the City only uses contractors for emergency maintenance.
5	Maintain contracts with current contractors and revise as necessary.	Met Goal – The City has requirements in place for contractors to comply with current stormwater requirements.
5	Inspect 100% of municipal operations and facilities once a year.	Did Not Meet Goal – The City did not annually inspect municipal operations and/or facilities.



Phase II MS4 Annual Report Form TPDES General Permit Number TXR040000

C. Stormwater Data Summary (Part IV Section B.2. (b))

1. Provide a summary of all information used, including any lab results (if sampling was conducted) to assess the success of the SWMP at reducing the discharge of pollutants to the MEP.

The following BMPs were used to evaluate the success of the SWMP at reducing pollutants to the maximum extent practicable.

- Public Reporting & Response Procedures
 - The City actively encourages, tracks, and responds to residents' observations of illicit discharges. While this does not require City forces to actively monitor, it allows for more "boots on the ground", more visual coverage, and city awareness and response.
- Source Investigation and Elimination
 - The City has developed written procedures for responding to illicit discharges including inspections, investigations, and corrective actions. Additionally, City staff that are routinely exposed to pollutant sources are trained to monitor and observe conditions as part of their day-to-day operations.
- Construction Site Inspections and Enforcement
 - This BMP requires city stormwater personnel to be actively monitoring construction sites for stormwater pollutants.
- Municipal Operation and Maintenance Activities
 - Observing the municipal operations and maintenance activities identifies possible pollutants that can be discharged into storm drains. In future years, the City has identified a BMP that will define monitoring and inspection frequencies which will result in active monitoring and observance of potential pollution.

D. Impaired Waterbodies (Part IV Section B.2. (c))

1. **Identify whether an impaired water within the permitted area was added to the latest EPA-approved 303(d) list of the Texas Integrated Report of Surface Water Quality for CWA Sections 305(b) and 303(d). List any newly-identified impaired waters below by including the name of the waterbody and cause of impairment.**

- The City of Everman discharges into North Fork Chambers Creek, South Fork Chambers Creek which are tributaries of Village Creek. The state classified waterbody that ultimately receives the discharge from Everman is Lake Arlington (#0828). While this waterbody is not located within a TMDL watershed, Village Creek is listed as impaired on the TCEQ 2022 303d Impaired Waterbodies list for bacteria. The City of Everman has implemented BMPs specifically targeting bacteria, including Pet Waste Management and Park Cleanups. The City will monitor and determine the effectiveness of these BMPs throughout the permit term and make any changes as needed.

2. **If applicable, explain below any activities taken to address the discharge to impaired waterbodies, including any sampling results and a summary of the small MS4's BMPs used to address the pollutant of concern.**

- Not applicable. The City of Everman discharges into an impaired water body (Village Creek) without an approved TMDL by TCEQ or EPA.



Phase II MS4 Annual Report Form TPDES General Permit Number TXR040000

3. Describe the implementation of targeted controls if the small MS4 discharges to an impaired waterbody with an approved TMDL.

- Not applicable. The City of Everman discharges into an impaired water body (Village Creek) without an approved TMDL by TCEQ or EPA.

4. Report the benchmark identified by the MS4 and assessment activities:

- Not applicable. The City of Everman discharges into an impaired water body (Village Creek) without an approved TMDL by TCEQ or EPA.

5. Provide an analysis of how the selected BMPs will be effective in contributing to achieving the benchmark:

- Not applicable. The City of Everman discharges into an impaired water body (Village Creek) without an approved TMDL by TCEQ or EPA.

6. If applicable, report on focused BMPs to address impairment for bacteria:

Description of bacteria-focused BMP	Comments/ Discussion
Park Cleanup	The program reduces the amount of trash in the local waterways.
Pet Waste Management	Informing residents about picking up after their pets can decrease the amount of bacteria entering local waterways.
Source Investigation and Elimination	The City has developed written procedures for responding to illicit discharges including inspections, investigations, and corrective actions. Additionally, City staff that are routinely exposed to pollutant sources are trained to monitor and observe conditions as part of their day-to-day operations.

7. Assess the progress to determine BMP's effectiveness in achieving the benchmark.

- Not applicable. The City of Everman discharges into an impaired water body (Village Creek) without an approved TMDL by TCEQ or EPA.



Phase II MS4 Annual Report Form TPDES General Permit Number TXR040000

E. Stormwater Activities (Part IV Section B.2. (d))

Describe any stormwater activities the MS4 operator has planned for the next reporting year.

The City is currently evaluating the requirements of the upcoming permit renewal and identifying which activities to continue and what new activities they plan to implement. The following is based on preliminary discussions and will be refined with development of their new SWMP. This information is summarized and paraphrased and it is understood that more detail will be provided with the upcoming SWMP.

MCM	BMP	Measurable Goal	Description/Comments
1: Public Education and Outreach	Information on the MS4 Operator's Website	Maintain a webpage with current and accurate information and working links.	The City will continue to post it's SWMP and Annual Reports on its website.
	Social Media Posts, Social Media Campaign	Post a minimum of 4 times per year; variety of impacts and practices; seasonally appropriate; quarterly	The City will develop a series of seasonally appropriate social media posts to post at least quarterly.
	Maintain or Mark Storm Drains and Inlets with "No Dumping – Drains to Creek" or similar Message	Install markings for at least 10% of inlets and maintain at least 15% once all markings are installed.	The City has currently marked 100% of its inlets and will maintain at least 15% annually.
2: Public Involvement /Participation	Stream/lake or watershed clean-up events; litter/trash clean-up events such as Texas Stream Team, Adopt-A-Highway, Adopt-A-Spot, Adopt-A-Street, Adopt-A-Stream, etc.	Host a minimum of two events annually.	The City will host 2 events and are currently planning events at Johnson Park and a Stream Clean Up.
	Educational display/booth at a school, public event, or similar event to provide information or displays that work to improve public understanding of issues related to water quality.	Provide one booth or display at minimum annually. The booth or display must be staffed during the time which the event is open to the public.	The City will provide bags with stormwater information at its National Night Out event.



Phase II MS4 Annual Report Form

TPDES General Permit Number TXR040000

MCM	BMP	Measurable Goal	Description/Comments
3: Illicit Discharge Detection and Elimination (IDDE)	Maintain a current and accurate MS4 map as described in Part IV.D.3.(c)(1)	Review and update, as necessary, at least one time annually to include features which have been added, removed, or changed.	The City will continue to maintain its outfall map
	Conduct training for all the permittee's field staff.	Conduct a minimum of one training annually for 100% of MS4 field staff that may come into contact with or otherwise observe an illicit discharge, illegal dumping, or illicit connection.	The City will continue to host training for its relevant staff.
	Maintain and publicize a public reporting method for the public to report illicit discharges, illegal dumping, or water quality impacts.	Maintain a minimum of one public reporting mechanism 100% of the time during the permit term. Publicize the public reporting mechanism a minimum of two times annually.	The City will continue to provide reporting forms and phone numbers on its website and will publicize reporting methods at least twice a year.
	Develop and maintain procedures for responding to illicit discharges, illegal dumping and spills.	Review and update the procedures at least one time annually to address changes and make improvements to the established procedures where applicable.	The City will develop and maintain standard operating procedures (SOPs) for IDDE Response.
	Source investigation and elimination of illicit discharges and illegal dumping.	Respond to 100% of known illicit discharges and illegal dumping incidents each year to investigate sources	The City will respond to 100% of reports of illicit discharges and illegal dumping.
	Corrective action to eliminate illicit discharges and illegal dumping.	For 100% of illicit discharges or illegal dumping where a source has been determined, notify the responsible party of the problem within 24 hours.	The City will continue to enforce its IDDE Ordinance and hold responsible parties accountable.
	Inspection Procedures.	Review and update the procedures at least one time annually to address changes and make improvements to the established procedures where applicable.	The City will review its standard operating procedures and update and improve as needed.
	Inspections in response to complaints	Conduct inspections in response to 100% of complaints each year according to the established procedures.	The City will continue to inspect 100% of complaints.



Phase II MS4 Annual Report Form

TPDES General Permit Number TXR040000

MCM	BMP	Measurable Goal	Description/Comments
4: Construction Site Stormwater Runoff Control	Develop and maintain an ordinance or other regulatory mechanism	Review and update the ordinance or other regulatory mechanism at least one time during the permit term	The City will continue to enforce and review its Erosion and Sediment Control Ordinance.
	Prohibit discharges	Review and update the ordinance or other regulatory mechanism at least one time during the permit term	The City will review its ordinance to make sure it meets the requirements of the permit and includes appropriate prohibited discharges.
	Maintain and implement site plan review procedures that describe which plans will be reviewed as well as when an operator may begin construction	Review and update site plan review procedures at least one time annually. Implement site plan review procedures for 100% of new construction site plans received each year.	The City will continue its site plan review procedures and review the procedures annually for compliance with the permit.
	Implement procedures for inspecting large and small construction projects	Conduct inspections at 80% of active construction sites annually according to the established procedures.	The City will continue to inspect 100% of construction sites.
	Develop, implement and maintain procedures for receipt and consideration of information submitted by the public	Maintain one webpage, hotline, or similar method for receipt of information submitted by the public throughout the permit term.	The City will continue to provide links and phone numbers for public reporting.
	Conduct training for all the MS4 staff whose primary job duties are related to implementing the construction stormwater program	Conduct a minimum of one training annually for 100% of MS4 staff whose primary job duties are related to implementing the construction stormwater program.	The City will continue to provide training to relevant staff at least once a year.



Phase II MS4 Annual Report Form

TPDES General Permit Number TXR040000

MCM	BMP	Measurable Goal	Description/Comments
5: Post-Construction Stormwater Management in New Development and Redevelopment	Develop and maintain an ordinance or other regulatory mechanism	Review and update the ordinance or other regulatory mechanism at least one time during the permit term to address changes and make improvements to the ordinance where applicable.	The City will continue to enforce its ordinance and will review it at least once during the upcoming permit term.
	Document and maintain records of enforcement actions and make them available for review by the TCEQ	Maintain records of 100% of enforcement actions taken each year.	The City will continue to maintain enforcement records and make them readily available to TCEQ upon request.
	Ensure the long term operation and maintenance of structural stormwater control measures installed	Maintain 100% of stormwater control measures each year where the MS4 operator is responsible for maintenance. Require 100% of the owners or operators of any new development or redeveloped sites to develop and implement a maintenance plan addressing maintenance requirement for any structural control measures installed on site.	The City will continue to maintain public stormwater control measures and enforce the maintenance of private stormwater control measures.
6. Pollution Prevention and Good Housekeeping for Municipal Operations	Permittee-owned Facilities and Control Inventory	Develop and maintain an annual inventory for 100% of the small MS4 owned and operated facilities and controls in the small MS4 area. Review and update the inventory at least one time annually	The City will continue to maintain a list of inventory and will review and update it at least annually.
	Training and Education	Conduct a minimum of one training annually for 100% of employees involved in implementing pollution prevention and good housekeeping practices.	The City will continue to provide training for relevant staff and city contractors.



Phase II MS4 Annual Report Form TPDES General Permit Number TXR040000

MCM	BMP	Measurable Goal	Description/Comments
6. Pollution Prevention and Good Housekeeping for Municipal Operations	Disposal of Waste Material	Ensure that 100% of waste from the MS4 is disposed of in accordance with 30 TAC Chapters 330 or 335, as applicable each year.	The City will ensure that its waste disposal is in accordance with the requirements.
	Contractor Requirements and Oversight	Each year, ensure that 100% of contractors hired by the MS4 to perform maintenance activities on permittee-owned facilities is contractually required to comply with all of the stormwater control measures, good housekeeping practices, and facility-specific stormwater management operating procedures	The City will continue to ensure that its contractors are complying with all stormwater regulations.
	Assessment of permittee-owned operations	Evaluate 100% of O&M activities for their potential to discharge pollutants in stormwater annually	The City will continue to evaluate its facilities and activities and adjust behaviors as needed.
	Identify pollutants of concern	Identify pollutants of concern that could be discharged from all of the O&M activities.	The City will review its prior assessments and adjust for new facilities or changes in operation and identify pollutants of concern.
	Pollution Prevention Measures	Develop and implement a set of pollution prevention measures that will reduce the discharge of pollutants in stormwater from the permittee-owned operations. Implement at least two of the pollution prevention measures identified in the permit.	The City will review its current implementation and ensure that it is meeting the permit requirements for pollution prevention measures on City owner facilities.
	Inspection of Pollution Prevention Measures	At least one time annually, visually inspect 100% of pollution prevention measures implemented at permittee-owned facilities to ensure they are working properly.	The City will inspect its facilities annually and will evaluate and adjust its inspection procedures at that time.



Phase II MS4 Annual Report Form TPDES General Permit Number TXR040000

F. Stormwater Modifications (Part IV Section B.2.(e))

1. The SWMP and MCM implementation procedures are reviewed each year.

Yes No

2. Changes have been made or are proposed to the SWMP since the NOI or the last annual report, including changes in response to TCEQ's review.

Yes No

If "Yes", report on changes made to measurable goals and BMPs:

G. Additional BMPs (Part IV Section B.2.(f))

Provide a description and schedule for implementation of additional BMPs that may be necessary, based on monitoring results, to ensure compliance with applicable TMDLs and implementation plans.

- No additional BMPs are anticipated for the City of Everman at this time.

H. Additional Information (Part IV Section B.2.(g))

1. Is the permittee relying on another entity/ies to satisfy some of its permit obligations?

Yes No

2.a. Is the named permittee sharing a SWMP with other entities?

Yes No

2.b. If 'yes,' is this a system-wide annual report including information for all permittees?

Yes No

I. Construction Activities (Part IV Section B.2.(h-i))

1. The number of construction projects in the jurisdiction of the MS4 where the permittee was not the construction site operator (as provided in submittals to the MS4 operator via notices of intent or site notices). 0

2. Does the permittee utilize the optional seventh MCM related to construction?

Yes No

2.b. If 'yes' then provide the following info for this permit year:



Phase II MS4 Annual Report Form TPDES General Permit Number TXR040000

The number of municipal construction activities authorized under this general permit	N/A
The total number of acres disturbed for municipal construction projects	N/A

J. Certification

I certify under penalty of law that this document and all attachments were prepared under my direction or supervision in accordance with a system designed to assure that qualified personnel properly gathered and evaluated the information submitted. Based on my inquiry of the person or persons who manage the system, or those person directly responsible for gathering the information, the information submitted is, to the best of my knowledge and belief, true, accurate, and complete. I am aware that there are significant penalties for submitting false information, including the possibility of fine and imprisonment for knowing violations.

Name: Craig W. Spencer

Title: City Manager

Signature:  _____

Date: 01/04/2024



STORMWATER MANAGEMENT PROGRAM

ANNUAL REPORT FORM

MCM: **Public Education, Outreach, & Involvement**

BMP Title: **Educational Brochures**

Responsible Department: Public Works

Measurable Goal: Year 5 – Provide brochures to the public at City facilities. Distribute brochures to at least one City event each year.

1. Was the measurable goal accomplished for this permit year? Yes No

(a) If so, explain what was done to accomplish the measurable goal.

On October 3, 2023, The City of Everman held the National Night Out event and distributed 100 each of "Stormwater: Keep Everman Water Clean", "6 Ways to Go Green with your Pet", and "Stormwater: What is it?" brochures.

(b) If not, why was the measurable goal not accomplished?

Stormwater brochures have not been placed at City Facilities.

2. Was this BMP appropriate to meet the intended MCM(s)? Yes No

3. Was this BMP considered to be successful? Yes No

(a) Please explain.

The BMP is considered partially successful. The City understands that educating the public about stormwater pollution is paramount to a successful program and raises awareness of stormwater pollution.

4. Are any changes to this BMP recommended for the next permit term? Yes No

(a) If so, please explain.

5. Will a Notice of Change (NOC) be issued for this BMP? Yes No

Storm Water: Keep Everman Water Clean!!



What is Stormwater?

Stormwater is rain that falls on roofs or paved areas like driveways and roads. It picks up chemicals and materials that are not naturally found in our waterways, i.e. fertilizers, cigarette butts, leaves, oil, soaps, etc., and carries them directly into the surrounding lakes and rivers. Stormwater is separate from the sewage system. Unlike wastewater, rainwater is not treated, and flows directly into the bodies of water that we use for swimming, fishing, and those that provide drinking water. Polluted runoff is the nation's greatest threat to clean water.

What are the impacts?

Sediment - Sediment enters stormwater when rainwater flows across bare soil. Sediment reduces water clarity, impedes aquatic plant growth and destroys aquatic habitats

Nutrients - In urban environments the two largest contributors to nutrients in stormwater runoff are pet waste and fertilizer. Excess nutrients cause algae overgrowths which may be toxic to humans and pets and reduce water oxygen levels for fish and other aquatic organisms

Human and animal waste (pets and wildlife)- contribute bacteria and pathogens to stormwater. These bacteria and pathogens cause illness and result in closing of swimming areas and impairment of streams that limits other recreational use.

Trash and debris - Stormwater runoff picks up trash and pollutants from streets and parking lots. These are carried through the storm sewer system and into our waterways. Trash may choke or suffocate wildlife and is unsightly.

Oils, chemicals, and other pollutants - From leaking automotive fluids to paint brushes rinsed out in the driveway, any chemical that is not properly stored, used, or disposed of has the potential to end up in the storm drain. Pollutants and chemicals alter water chemistry, diminishing water quality that supports many aquatic organisms.

DEFINITION OF ILLICIT DISCHARGE

Texas Commission on Environmental Quality (TCEQ) defines an illicit discharge as: any discharge to a municipal separate storm sewer that is not entirely composed of storm water, except discharges pursuant to this general permit (TXR04000) or a separate authorization and discharges resulting from emergency fire fighting activities.

What this means is that illicit discharge is anything that enters our storm drainage system that is not completely storm water.

Examples:

- Fertilizers & Pesticides
- Vehicle Fluid Leaks
- Loose Soil, Leaves, and Grass Clippings
- Paint and Household Chemical Spills

How can the community help?

These simple at home measures can help protect our natural resources:

- Sweep your gutters and driveways instead of hosing them down
- Put leaves in the compost or the garden as mulch
- Use commercial carwashes instead of washing your car in your driveway
- Have routine maintenance performed on your cars to prevent leaks and properly dispose of fluids.
- Clean up pet waste
- Use chemical pesticides as a last resort, know your pest, and narrowly target it
- Do not apply fertilizers in excess or if rain is forecasted
- Plant grass where soil is exposed and enclose your garden beds to contain soil and other substances
- Properly dispose of hazardous household products



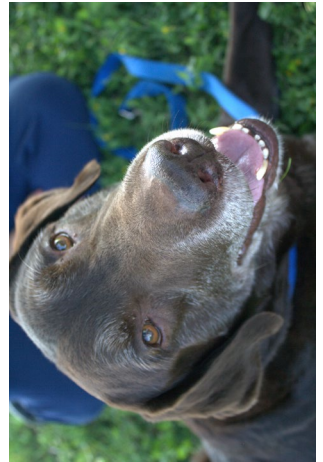
212 Race St
Everman TX 76140

817-293-0525 (OFFICE)
817-551-7549 (FAX)



Take Care of Texas is a statewide campaign from the Texas Commission on Environmental Quality (TCEQ). TCEQ—the state’s environmental agency—created Take Care of Texas in 2007 to provide helpful information about our collective role in environmental protection in our homes, workplaces, and communities.

For more information visit:
<https://takecareoftexas.org/>



CITY OF EVERMAN:
 212 N Race St
 Everman TX 76140
<http://www.evermantx.us/>



CITY OF EVERMAN:
6 WAYS TO GO GREEN WITH YOUR PET





Go GREEN!

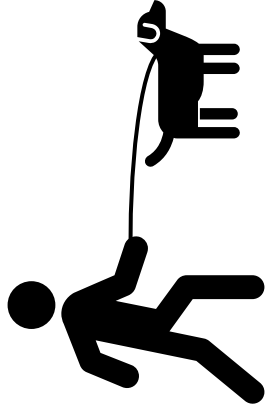
1. Make the Safer Choice

Use eco-friendly products to clean up after your pet. Items with Safer Choice label contain ingredients that are safer for your family, pets, and the environment.



2. Take a Walk:

Instead of driving to the dog park, locate a park or nature trail that is within walking distance. You and your pet will get in extra steps, plus you will save money on gas!



3. Reuse Old Bedding and Towels

Use your old towels as rags to clean up your pet's messes or to dry them off after a bath. Old bedding or blankets can make great liners for pet crates or beds.

4. Pick up Pet Waste

Whether you are on a walk or in your own backyard, always pick up your pet's waste.



Pet waste does not make a good fertilizer for your lawn, and stormwater can carry into waterways.

5. Buy Eco-Friendly Pet Toys

If you plan to buy a new toy, look for one made from recycled rubber or other recycled materials.

6. Donate Items to Reuse

If there are items that your pet no longer uses or has grown out of, consider donating them to your local animal shelter to be reused. These can include items such as crates, beds, sheets, towels, or toys.



STORMWATER MANAGEMENT PROGRAM

ANNUAL REPORT FORM

MCM: **Public Education, Outreach, & Involvement**

BMP Title: **Park Cleanup**

Responsible Department: Public Works

Measurable Goal: Year 5 – Advertise the cleanup at least once on the City’s website. Coordinate at least once annual cleanup event.

1. Was the measurable goal accomplished for this permit year? Yes No
(a) If so, explain what was done to accomplish the measurable goal.

(b) If not, why was the measurable goal not accomplished?

The City of Everman did not host an annual cleanup event for Year 5. There has been a staff transition.

2. Was this BMP appropriate to meet the intended MCM(s)? Yes No
3. Was this BMP considered to be successful? Yes No
(a) Please explain.

The BMP is considered unsuccessful because it was not completed. The City understands that keeping the City’s stream and channels clear from trash and debris lead to better water quality.

4. Are any changes to this BMP recommended for the next permit term? Yes No
(a) If so, please explain.

5. Will a Notice of Change (NOC) be issued for this BMP? Yes No



STORMWATER MANAGEMENT PROGRAM

ANNUAL REPORT FORM

MCM: **Public Education, Outreach, & Involvement**

BMP Title: **Pet Waste Management**

Responsible Department: Public Works

Measurable Goal: Year 5 – Provide educational material about pet waste at 1 City events annually.

1. Was the measurable goal accomplished for this permit year? Yes No

(a) If so, explain what was done to accomplish the measurable goal.

On October 3, 2023, the City of Everman held the National Night Out event and distributed 100 of the "6 Ways to Go Green with Your Pet" brochures.

(b) If not, why was the measurable goal not accomplished?

2. Was this BMP appropriate to meet the intended MCM(s)? Yes No

3. Was this BMP considered to be successful? Yes No

(a) Please explain.

The BMP is partially successful because educational material is provided at City Hall and the public library, but not distributed at City events. The City understands the importance of educating the public about how pet waste impacts stormwater quality.

4. Are any changes to this BMP recommended for the next permit term? Yes No

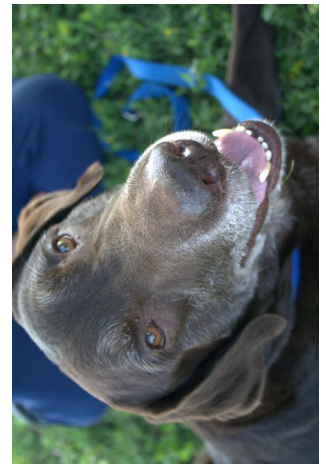
(a) If so, please explain.

5. Will a Notice of Change (NOC) be issued for this BMP? Yes No



Take Care of Texas is a statewide campaign from the Texas Commission on Environmental Quality (TCEQ). TCEQ—the state’s environmental agency—created Take Care of Texas in 2007 to provide helpful information about our collective role in environmental protection in our homes, workplaces, and communities.

For more information visit:
<https://takecareoftexas.org/>



CITY OF EVERMAN:
6 WAYS TO GO
GREEN WITH
YOUR PET



CITY OF EVERMAN:
 212 N Race St
 Everman TX 76140
<http://www.evermantx.us/>





Go GREEN!

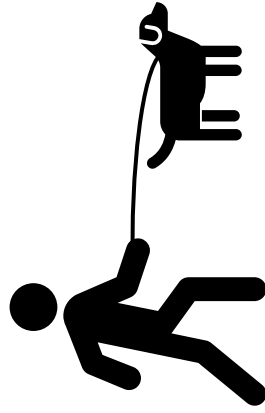
1. Make the Safer Choice

Use eco-friendly products to clean up after your pet. Items with Safer Choice label contain ingredients that are safer for your family, pets, and the environment.



2. Take a Walk:

Instead of driving to the dog park, locate a park or nature trail that is within walking distance. You and your pet will get in extra steps, plus you will save money on gas!



3. Reuse Old Bedding and Towels

Use your old towels as rags to clean up your pet's messes or to dry them off after a bath. Old bedding or blankets can make great liners for pet crates or beds.

4. Pick up Pet Waste

Whether you are on a walk or in your own backyard, always pick up your pet's waste.



Pet waste does not make a good fertilizer for your lawn, and stormwater can carry into waterways.

5. Buy Eco-Friendly Pet Toys

If you plan to buy a new toy, look for one made from recycled rubber or other recycled materials.

6. Donate Items to Reuse

If there are items that your pet no longer uses or has grown out of, consider donating them to your local animal shelter to be reused. These can include items such as crates, beds, sheets, towels, or toys.



STORMWATER MANAGEMENT PROGRAM

ANNUAL REPORT FORM

MCM: **Public Education, Outreach, & Involvement**

BMP Title: **Storm Drain Marking**

Responsible Department: Public Works

Measurable Goal: Year 5 – Annually inspect 20% of marked inlets. Perform any maintenance if necessary.

1. Was the measurable goal accomplished for this permit year? Yes No
(a) If so, explain what was done to accomplish the measurable goal.

In 2023, the City inspected 294 inlets and included in that inspection is ensuring that the markings are still intact and making repairs or replacements as necessary. None of the inlet inspection records indicated issues with the markings.

- (b) If not, why was the measurable goal not accomplished?

2. Was this BMP appropriate to meet the intended MCM(s)? Yes No
3. Was this BMP considered to be successful? Yes No
(a) Please explain.

Marking storm drains is a great way to deter residents or commercial businesses from dumping waste or pollutants. Storm drain message reminds residents the storm drain goes straight to the creek, not a wastewater treatment plant.

4. Are any changes to this BMP recommended for the next permit term? Yes No
(a) If so, please explain.

5. Will a Notice of Change (NOC) be issued for this BMP? Yes No

STORM DRAINS LOG

NAME: Marcos Aguirre

Location:	Amount:	Date:	Notes:
✓ 301 Chambers / Allison	3	12/15/23	
✓ 551 Chambers Creek / Georgetown	2	12/15/23	
✓ 701 Chambers Creek / Steeple Ridge	1	12/15/23	
✓ 400 Colonial	2	12/15/23	
✓ 313 Allison	# 2	12/15/23	
✓ 329-333 Christie	1	12/15/23	light Brush blockage
✓ 541 Russell	2	12/15/23	
✓ 420 Edna Dr / Michael Dr 4705	3	12/15/23	
✓ Michael / Everman Pkwy	2	12/15/23	
✓ 1000 Coury	1	12/15/23	
✓ 409 Chambers Creek	2	12/15/23	
✓ 300 Thomas Place	1	12/15/23	
✓ Christopher / Everman Pkwy	2	12/15/23	
✓ Everman Pkwy – between Dollar General & Christopher	2	12/15/23	
✓ Kelley / Michael	3	12/15/23	light brush blockage (1)
✓ 700 Russell – This is the creek	Creek	12/15/23	
✓ Russell / Kelley	Creek	12/15/23	blockage on one side
✓ Everman Pkwy – Across field #3	1	12/15/23	
✓ Rosings Pl / Sussex Dr	2	12/15/23	black TARE/light Pooling
✓ Rosings Pl / Thompson Pl	4	12/15/23	
✓ Thompson Pl / Dunswood Dr	2	12/15/23	
✓ Sussex Dr / Dunswood Dr	6	12/15/23	
✓ Woodhouse Way / Dunswood Dr	5	12/15/23	
✓ Woodhouse way / Arango way	2	12/15/23	

STORM DRAINS LOG

NAME: _____

✓ Mugsgroove Rd / Roy C Brooks	2	12/15/23	
✓ Arango Way / Sussex Dr	4	12/15/23	
✓ E Bell / Thompson Pl	2	12/15/23	Black Tarp / light Pooling
✓ Kelso / Thompson Pl	2	12/15/23	Black Tarp / Pooling

2023

Storm Drains Log

Fernando Touar

Location:	Amount:	Date:	Notes:
301 Chambers / Allison	3	10-24	
551 Chambers Creek / Georgetown	2	10-24	
701 Chambers Creek / Steeple Ridge	1	10-24	
400 Colonial	2	10-24	
313 Allison	1	10-24	
329-333 Christie	1	10-24	HAS PROBLEM ^{no} Gate
541 Russell	2	10-24	
420 Edna Dr / Michael Dr	3	10-24	
Michael / Everman Pkwy - by Nina restaurant	2		
1000 Coury	1	10-24	
409 Chambers Creek	2	10-24	
700 Russell - This is the creek	Creek	10-24	HAS DEBRIS
Rosings Pl / Woodhouse way	4		ALL HAVEN'T BEEN OPENED
Rosings Pl / Sussex Dr	2		
Rosings Pl / Thompson Pl	4		
Thompson Pl / Dunswood Dr	2		
Sussex Dr / Dunswood Dr	6		
Woodhouse Way / Dunswood Dr	5		
Woodhouse way / Arango way	2		
Mugsgroove Rd / Roy C Brooks	2		
Arango Way / Sussex Dr	4		
E Bell / Thompson Pl	2		
Kelso / Thompson Pl	2		

Taken care off 10-25-23

Removed



300 THOMAS PLACE I check drain

STORM DRAINS LOG

NAME: David / Tony

Location:	Amount:	Date:	Notes:
301 Chambers / Allison	3	10-25-23	
551 Chambers Creek / Georgetown	2	10-25-23	Branch Removed
701 Chambers Creek / Steeple Ridge	1	10-25-23	
400 Colonial	2	10-25-23	
313 Allison ¹ 300 ₁	(2) *	10-25-23	Trash Bag and Branch - Removed
329-333 Christie	1	10-25-23	
541 Russell	2	10-25-23	
420 Edna Dr / Michael Dr	3	10-25-23	
Michael / Everman Pkwy - by Nina restaurant	2	10-25-23	
1000 Coury	1	10-25-23	
409 Chambers Creek	2	10-25-23	
700 Russell - This is the creek	Creek	10-25-23	grass - Brush - limbs - leaves Removed
Rosings Pl / Woodhouse way	4	10-25-23	
Rosings Pl / Sussex Dr	2	10-25-23	
Rosings Pl / Thompson Pl	4	10-25-23	
Thompson Pl / Dunswood Dr	2	10-25-23	
Sussex Dr / Dunswood Dr	6	10-25-23	
Woodhouse Way / Dunswood Dr	5	10-25-23	
Woodhouse way / Arango way	2	10-25-23	
Mugsgroove Rd / Roy C Brooks	2	10-25-23	
Arango Way / Sussex Dr	4	10-25-23	la agua esta estancada
E Bell / Thompson Pl	2	10-25-23	
Kelso / Thompson Pl	2	10-25-23	
300 Thomas Place	1	10-25-23	Removed Branch

300
Grass 1

Same Intersection

1000 (Kelley/~~Rossett~~ Michael)
Michael/Kelley

* 3
2

Brush and Grass
Brush Trash



STORM DRAINS LOG

NAME: Fernando / Rodolfo

Location:	Amount:	Date:	Notes:
301 Chambers / Allison	3	10-26-23	
551 Chambers Creek / Georgetown	2	10-26-23	
701 Chambers Creek / Steeple Ridge	1	10-26-23	
400 Colonial	2	10-26-23	
313 Allison	* 2	10-26-23	
329-333 Christie	1	10-26-23	
541 Russell	2	10-26-23	
420 Edna Dr / Michael Dr	3	10-26-23	
Michael / Everman Pkwy - by Wine Restaurant	2	10-26-23	
1000 Coury	* 2	10-26-23	
409 Chambers Creek	2	10-26-23	
700 Russell - This is the creek	Creek	10-26-23	Debris TRAP
Rosings Pl / Woodhouse way	4	10-26-23	SCREENS
Rosings Pl / Sussex Dr	2	10-26-23	SCREENS
Rosings Pl / Thompson Pl	4	10-26-23	SCREENS
Thompson Pl / Dunswood Dr	2	10-26-23	SCREENS
Sussex Dr / Dunswood Dr	6	10-26-23	SCREENS
Woodhouse Way / Dunswood Dr	5	10-26-23	SCREENS WITH Debris
Woodhouse way / Arango way	2	10-26-23	SCREENS
Mugsgroove Rd / Roy C Brooks	2	10-26-23	* 1
Arango Way / Sussex Dr	4	10-26-23	SCREENS
E Bell / Thompson Pl	2	10-26-23	SCREENS
Kelso / Thompson Pl	2	10-26-23	SCREENS
300 Thomas Place	1	10-26-23	

Everman Parkway Across Field 3##

Chirs to Phoe / Everman Pkwy
②

Kelley / Michael
③

EVERMAN PARKWAY
Doller Gen / Christopher
②

REMOVED
SISH

STORM DRAINS LOG

NAME: Fernando

Location:	Amount:	Date:	Notes:
301 Chambers / Allison	3	11-9	HAD wood removed
551 Chambers Creek / Georgetown	2	11-9	
701 Chambers Creek / Steeple Ridge	1	11-9	
400 Colonial	2	11-9	
313 Allison	1	11-9	
329-333 Christie	1	11-9	
541 Russell	2	11-9	
420 Edna Dr / Michael Dr	3	11-9	
Michael / Everman Pkwy	2	11-9	
1000 Coury	1	11-9	
409 Chambers Creek	2	11-9	
300 Thomas Place	1	11-9	
Christopher / Everman Pkwy	2	11-9	
Everman Pkwy – between Dollar General & Christopher	2	11-9	
Kelley / Michael	3	11-9	
700 Russell – This is the creek	Creek	11-9	
Russell / Kelley	Creek	11-9	
Everman Pkwy – Across field #3	1	11-9	
Rosings Pl / Sussex Dr	2	11-9	
Rosings Pl / Thompson Pl	4	11-9	
Thompson Pl / Dunswood Dr	2	11-9	
Sussex Dr / Dunswood Dr	6	11-9	
Woodhouse Way / Dunswood Dr	5	11-9	
Woodhouse way / Arango way	2	11-9	

STORM DRAINS LOG

NAME: _____

<i>Mugsgroove Rd / Roy C Brooks</i>	2	11-9	
<i>Arango Way / Sussex Dr</i>	4	11-9	
<i>E Bell / Thompson Pl</i>	2	11-9	
<i>Kelso / Thompson Pl</i>	2	11-9	



STORMWATER MANAGEMENT PROGRAM

ANNUAL REPORT FORM

MCM: **Public Education, Outreach, & Involvement**

BMP Title: **Youth Education**

Responsible Department: Public Works

Measurable Goal: Year 5 – A minimum of 20% of all schools will be educated every year on stormwater pollution by providing local schools in the City with materials, including brochures, coloring books, and other media.

1. Was the measurable goal accomplished for this permit year? Yes No
(a) If so, explain what was done to accomplish the measurable goal.

(b) If not, why was the measurable goal not accomplished?

The City did not distribute educational material to local schools. They did distribute materials at National Night Out as indicated in prior BMPs which included youth attendees.

2. Was this BMP appropriate to meet the intended MCM(s)? Yes No
3. Was this BMP considered to be successful? Yes No
(a) Please explain.

The City understands providing stormwater education for youth audiences is an important part of the stormwater program. The more people that are educated, the more likely a reduction in pollutants in stormwater will occur.

4. Are any changes to this BMP recommended for the next permit term? Yes No
(a) If so, please explain.

5. Will a Notice of Change (NOC) be issued for this BMP? Yes No



STORMWATER MANAGEMENT PROGRAM

ANNUAL REPORT FORM

MCM: **Public Education, Outreach, & Involvement**

BMP Title: **SWMP Annual Review**

Responsible Department: Public Works

Measurable Goal: Year 5 – Annually review SWMP to ensure compliance.

1. Was the measurable goal accomplished for this permit year? Yes No
(a) If so, explain what was done to accomplish the measurable goal.

The City of Everman reviewed the Stormwater Management Program along with the current BMPs. No revisions were deemed necessary.

- (b) If not, why was the measurable goal not accomplished?

2. Was this BMP appropriate to meet the intended MCM(s)? Yes No
3. Was this BMP considered to be successful? Yes No
(a) Please explain.

It is important to review the SWMP annually to ensure BMPs are clear, specific, and measurable.

4. Are any changes to this BMP recommended for the next permit term? Yes No
(a) If so, please explain.

5. Will a Notice of Change (NOC) be issued for this BMP? Yes No



STORMWATER MANAGEMENT PROGRAM

ANNUAL REPORT FORM

MCM: **Illicit Discharge Detection and Elimination**

BMP Title: **Illicit Discharge Ordinance**

Responsible Department: Public Works

Measurable Goal: Year 5 – Conduct 100% of illicit discharge inspections. Investigate 100% of illicit discharges reported.

1. Was the measurable goal accomplished for this permit year? Yes No

(a) If so, explain what was done to accomplish the measurable goal.

The City continues to enforce the illicit discharge ordinance. There was one violation reported in Year 5 that was also reported to TCEQ. The initial report occurred on August 17 and was addressed by September 1.

(b) If not, why was the measurable goal not accomplished?

2. Was this BMP appropriate to meet the intended MCM(s)? Yes No

3. Was this BMP considered to be successful? Yes No

(a) Please explain.

Having an ordinance to enforce illicit discharges is an important aspect of the stormwater management program. It allows the City to act on potentially harmful impacts to water quality.

4. Are any changes to this BMP recommended for the next permit term? Yes No

(a) If so, please explain.

5. Will a Notice of Change (NOC) be issued for this BMP? Yes No



(817) 293-0525 (Main)
(817) 551-9495 (Fax)
www.evermantx.us

CITY OF EVERMAN

212 N. Race St.
Everman, TX 76140

On August 17th of 2023 at 1:07 PM, a possible illicit discharge stormwater violation was notified by Rick Fuller. That same day, at 1:54 PM, the City of Everman investigated and reported this issue to TCEQ.

On August 30th of 2023, the City of Everman informed the business owner of “D & S Glass” that there was a spill on the street and it should be cleaned up immediately.

On September 1st of 2023, the owner addressed the situation and it was no longer an issue.

Before:



After:





STORMWATER MANAGEMENT PROGRAM

ANNUAL REPORT FORM

MCM: **Illicit Discharge Detection and Elimination**

BMP Title: **Storm Drainage Outfall Map**

Responsible Department: Public Works

Measurable Goal: Year 5 – Annually update the map to include any new outfall from development or redevelopment

1. Was the measurable goal accomplished for this permit year? Yes No
(a) If so, explain what was done to accomplish the measurable goal.

The City has mapped 100% of the outfalls. The City annually reviews and updates the outfall map to include any outfalls from development or redevelopment. There was one new development completed this year – Hanna Ranch, Phase 4. Inlets and outfalls from Hanna Ranch, Phase 4 have been added to the map.

- (b) If not, why was the measurable goal not accomplished?

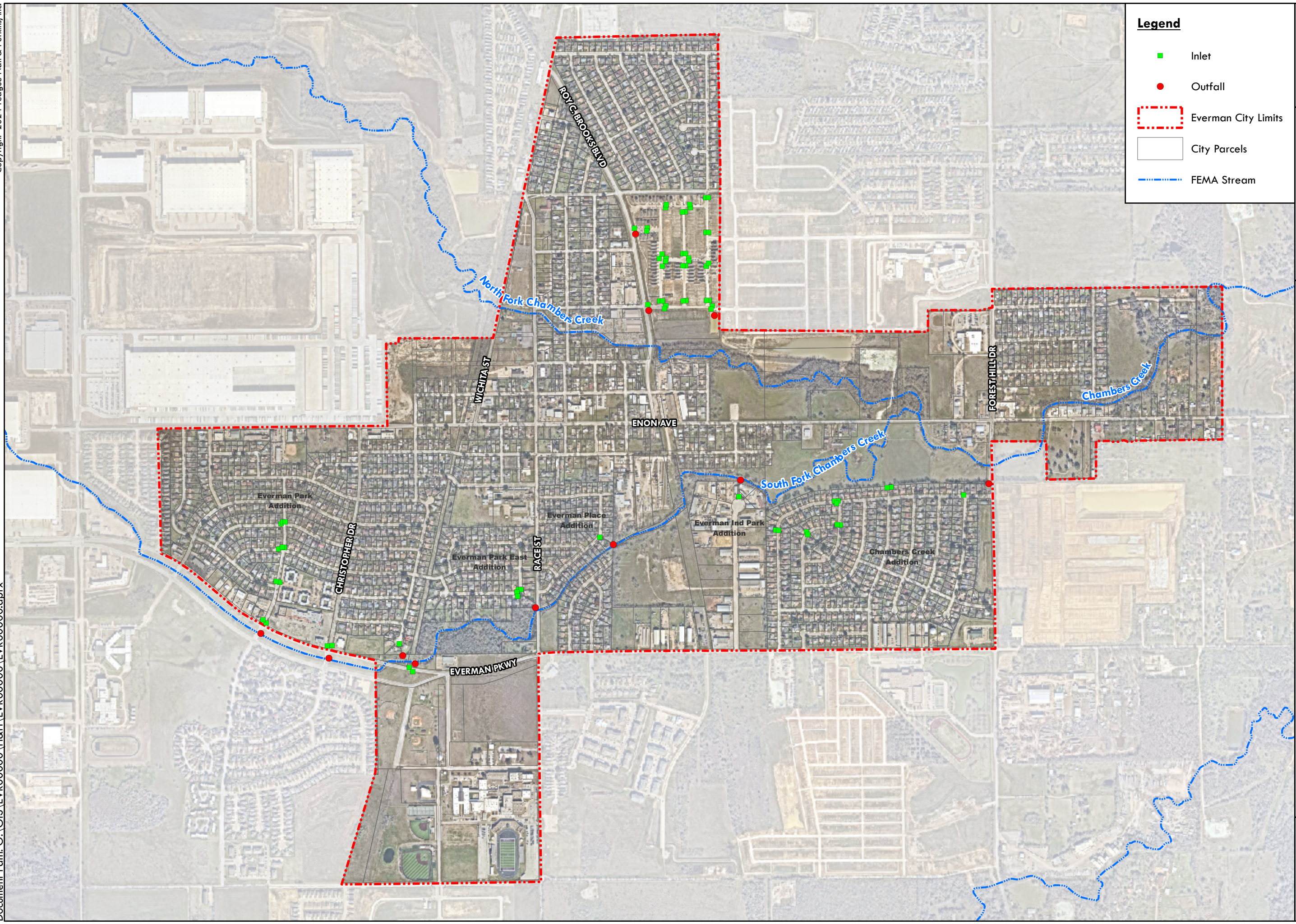
2. Was this BMP appropriate to meet the intended MCM(s)? Yes No
3. Was this BMP considered to be successful? Yes No
(a) Please explain.

The storm drainage outfall map is vital to the success of the illicit discharge detection and elimination program. The map is used to track the location of upstream pollutant discharges when performing the dry weather field inspections.

4. Are any changes to this BMP recommended for the next permit term? Yes No

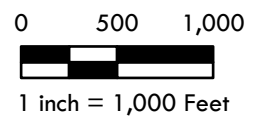
- (a) If so, please explain.

5. Will a Notice of Change (NOC) be issued for this BMP? Yes No



Legend

- Inlet
- Outfall
- Everman City Limits
- City Parcels
- FEMA Stream



Everman, Texas
Everman Stormwater Management Program
EXHIBIT 1
OUTFALL MAP
February 2024





STORMWATER MANAGEMENT PROGRAM

ANNUAL REPORT FORM

MCM: **Illicit Discharge Detection and Elimination**

BMP Title: **Education and Training on Illicit Discharges**

Responsible Department: Public Works

Measurable Goal: Year 5 – Provide annual IDDE training at least once a year for designated City staff and new hires.

1. Was the measurable goal accomplished for this permit year? Yes No
(a) If so, explain what was done to accomplish the measurable goal.

The City conducted training on December 20, 2023. It was a Safety Meeting, but a TCEQ Stormwater Video was shown at the beginning of the training.

- (b) If not, why was the measurable goal not accomplished?

2. Was this BMP appropriate to meet the intended MCM(s)? Yes No
3. Was this BMP considered to be successful? Yes No
(a) Please explain.

The City understands educating and training the staff on illicit discharges is important because it identifies any possible illicit discharges and how to resolve them. Reporting and acting when discharges happen can result in minimizing pollution to lakes and streams.

4. Are any changes to this BMP recommended for the next permit term? Yes No
(a) If so, please explain.

5. Will a Notice of Change (NOC) be issued for this BMP? Yes No

Safety Meetings Sign-In Sheet

Date: 12/20/2023

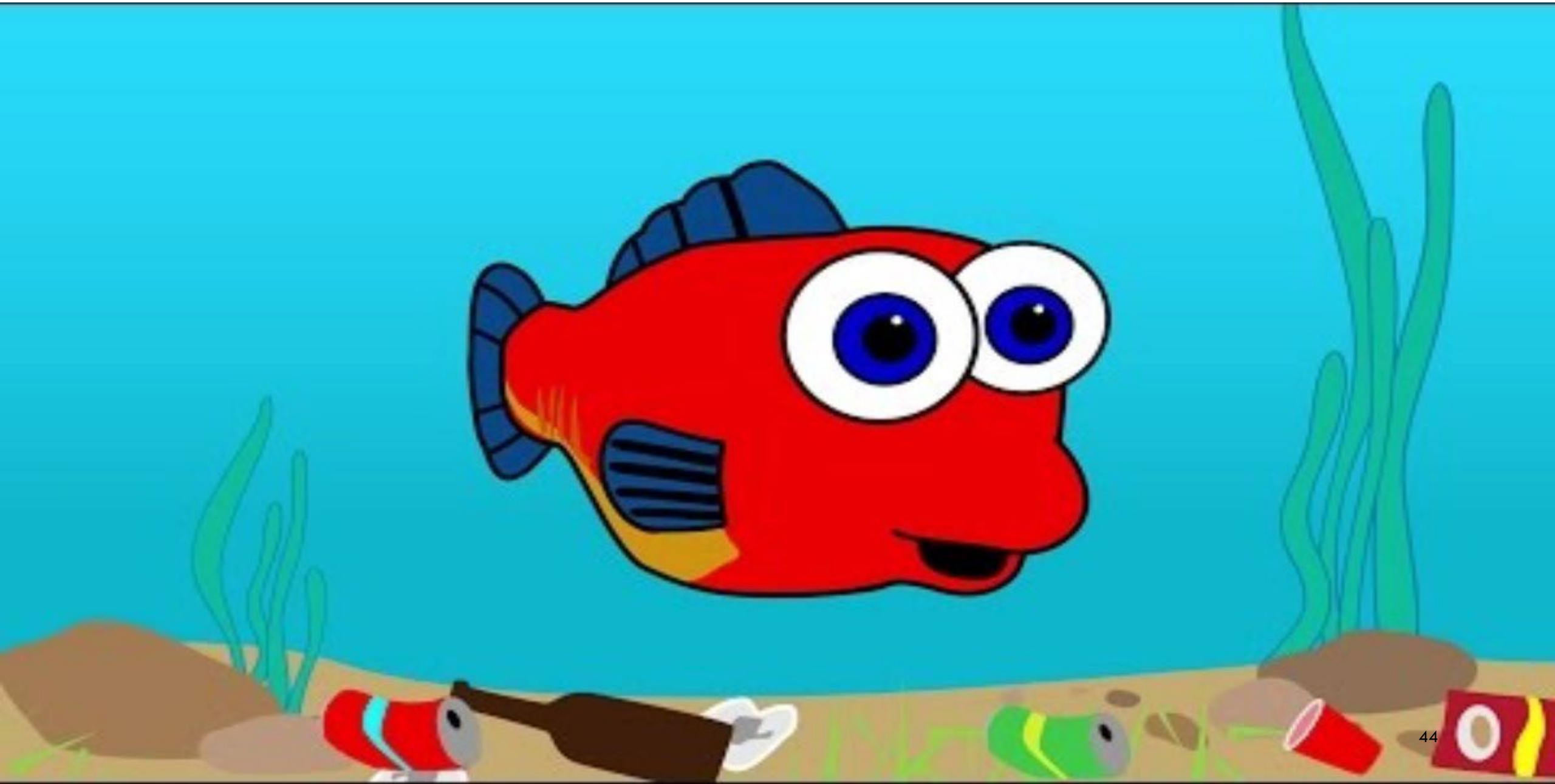
Location: Civic Center

<u>Name</u>	<u>Date</u>	<u>Time In</u>	<u>Time Out</u>
Marcos Aguirre	12/20/23	4:00 pm	
Anthony Chavez	12/20/23	4:11 pm	
Rodolfo Gonzalez	12/20/23	4:00 pm	
Fernando Tovar	12/20/23	4:11 pm	
Jose Zedillo	12/20/23	4:12 pm	
David Alvarez	12/20/23	4:12 pm	
Ryan Torres	12/20/23	4:12:55 pm	
Ryan Mostace	12/20/23	4:13:24 pm	
Evelyn Romero	12/20/23	4:00 pm	
Gilbert Ramirez	12/20/23	4:00 pm	

SAFETY MEETING



STORMWATER VIDEO



ARTICLE XII. SAFETY REGULATIONS

- Sec. 12.01. Purpose. The purpose of this article is to establish the safest possible working conditions for city employees and to assure that employees exercise due care for the safety of the public.
- Sec. 12.02. Responsibilities. The responsibility for a successful safety program in the work place rests with every employee. All levels of city management and supervision shall demonstrate commitment in and support of city safety regulations.

SEC. 12.03. DUTIES OF EMPLOYEES.

- Every employee has the duty to be knowledgeable of safety rules applicable to the employee's work.
- An employee shall:
 - (1) follow all safety rules, posted safety signs, job safety training, and operating procedures applicable to the employee's work;
 - (2) immediately report accidents and injuries to the employee's supervisor, regardless of how minor;
 - (3) immediately report unsafe conditions, equipment, or acts, or fire or suspicion of fire to the employee's supervisor;
 - (4) maintain the employee's work area and work facility in a clean, healthful, and sanitary condition;
 - (5) maintain city equipment under the care of the employee in accordance with accepted safety practices applicable to the specific equipment and perform required safety checks of the equipment both before and following operation of the equipment;
 - (6) comply with the city's ordinance regarding use of tobacco;
 - (7) consume food and beverages in designated areas only.

SEC. 12.05. PROTECTIVE EQUIPMENT.

- (a) Required; signs posted. Employees shall use or wear protective equipment in areas of the city work place and in the performance of tasks for which it is required. Designated areas will be posted with a conspicuous sign that describes when and what type of protective equipment is required.
- (b) Types. Protective equipment includes, but is not limited to: head protection, ear protection, face and eye protection, respiratory equipment, safety belts, protective footwear, and special work clothing.
- (c) Purchase through payroll deductions. The city will not furnish steel-toed shoes although some departments may require them as conditions of employment. The personnel clerk may provide for purchase of steel-toed shoes and other required safety equipment through payroll deduction.

OPEN DISCUSSION

Discuss ways to improve our department and continue to work as a team and implement better safety in Public Works.





STORMWATER MANAGEMENT PROGRAM

ANNUAL REPORT FORM

MCM: **Illicit Discharge Detection and Elimination**

BMP Title: **Public Reporting & Response Procedures**

Responsible Department: Public Works

Measurable Goal: Year 5 – Investigate 100% of illicit discharges reported.

1. Was the measurable goal accomplished for this permit year? Yes No
(a) If so, explain what was done to accomplish the measurable goal.

The City has a posted number for residents and businesses to report illegal dumping and illicit discharges on the City website. This year, no reports were received, but the City encourages residents to report any type of illicit discharge. The attached work orders report was reviewed to determine if any tasks were related to illicit discharge and there were none.

(b) If not, why was the measurable goal not accomplished?

2. Was this BMP appropriate to meet the intended MCM(s)? Yes No
3. Was this BMP considered to be successful? Yes No
(a) Please explain.

Allowing the public to be part of a reporting system helps target and address illicit discharges in a timely manner. City staff alone, is not large enough to be monitoring all waterways at all times.

4. Are any changes to this BMP recommended for the next permit term? Yes No
(a) If so, please explain.

5. Will a Notice of Change (NOC) be issued for this BMP? Yes No



Timestamp	Submitter's Name	Location of problem	Type	Describe the problem	Status	Notes
2/14/2023 9:14:57	Doug Kilgore	Unit 125	Vehicle/Fleet	Registration is expired/Vehicle has new TSI	In Progress	
3/14/2023 13:00:23	Colby Rhea	Unit 120	Vehicle/Fleet	Vehicle is running rough and overheating almost constantly despite being full of coolant.	In Progress	Reported to need new engine- 190 5-26-23
3/17/2023 5:08:24	L. RAPER 716	NORTH PARKING LOT CAMERA	Computer/IT	NOTICED THE CAMERA SYSTEM WILL NOW SHOW THE NORTH PARKING LOT AND UPON WALKING OUTSIDE TO TEH DRIVEWAY, THE CAMERA APPEARS TO BE OFF, NONE OF ITS NORMAL LIGHTS ARE ON.	Completed	Camera has been replaced
3/19/2023 19:26:50	Jeremy Joiner	Communications position 3	Furniture	The cable that connects to the left handle to raise and lower the keyboard tray on the desk has popped out the bracket side and the tray can't be adjusted.	In Progress	
4/7/2023 11:45:51	Jon Dezaruba	Fire Department	National Telesystem	National Telesystems never returned to fire station to connect the day room phone up.	In Progress	
4/7/2023 13:28:22	Windy McGarrey	Dispatch	Computer/IT	Position 3 - The phone box on the right side of the console is not working properly. The left port seems to have gone out.	In Progress	Both ports have been checked and settings were adjusted. Follow up to occur- BP 6/8
4/13/2023 7:41:19	Erica Soto	DISPATCH-need more brown folders	Dispatch	Need more brown folders	Completed	Manila folders will be used moving forward with new Mansfield and scanning processes - BP 6/8
4/22/2023 12:18:26	C. RHEA # 258	Laptop	Computer/IT	Laptop wont allow login and says that there are too many users when I try to connect with net mobility. The laptop is in the patrol room with 258 attached on a sticky note. The serial number IC number is 216A-CFWL12A	In Progress	
4/23/2023 13:52:21	randy harris	Dispatch	Computer/IT	CAD freezes as you're typing, logging entries, or switching functions	In Progress	
4/23/2023 19:49:11	SGT J. Thompson	Patrol Office	Computer/IT	WatchGuard Video EL4 need to be reinstall on Patrol-01 computer	In Progress	
4/27/2023 15:38:45	Ofc. Bobby Pender #271	Unit #122	Vehicle/Fleet	Leaking washer fluid tank (Needs Replacement)	In Progress	At Bruce Lowrie
4/27/2023 15:41:51	Ofc. Bobby Pender	Unit #122	Vehicle/Fleet	Randomly shifting hard when coming to stop. Check engine light flashing off and on. It then goes off.	In Progress	At Bruce Lowrie
3/27/2023 6:50:50	M. TREPPA	UNIT #122	Computer/IT	AVL NOT WORKING / #235 REQUEST WORK ORDER	Completed	Fixed
4/9/2023 14:03:47	L. RAPER 716	TLETS Printer	Computer/IT	The printer does not seem to be connecting to the TLETS on Everman side. Position 4	In Progress	
4/29/2023 19:20:10	Beverly chavez	Radio/phone jack port	Phone jack/ radio port	Callers/radio are not able to hear dispatcher, switched port to left side, somewhat better, echoes.	In Progress	Adjustments have been made will do a follow up-BP 6/8
5/2/2023 21:31:49	Laura L Lopez	Communications Center	Computer/IT	Unable to read PDF files due to Adobe wanting me to log in. When closing out the sign in box, Adobe closes the entire document. This is on the work computer under my log in. Unsure if others are having same issue. This issue started appx two weeks ago. Beverly was notified via email about the issue when it started.	In Progress	
5/5/2023 11:12:30	Windy McGarrey	Dispatch	Computer/IT	the standalone printer Samsung ML 3312ND needs ink/toner	In Progress	
5/8/2023 5:16:43	SGT Thompson	Street intersections	Street Maintenance (including signs)	The flashing red lights are not working at the following locations. Roy C. Brooks & Enon Roy C. Brooks & Wichita Race and Enon Westbound Race & Enon Northbound Race & Enon Southbound	Completed	Bought and replaced all faulty lights. 11/1/23
5/9/2023 23:46:07	Dispatch/Teresa	Police Department	Computer/IT	Requesting login credentials for Forest hill cameras, the monitor updated and system restarted.	In Progress	
5/10/2023 13:50:59	Jared Quintero	720 VAUGHN AVE	Street Maintenance (including signs)	A big hole in the street and her Driveway	Completed	9/19/23

5/11/2023 15:11:58	Bobby Pender	Unit 123	Vehicle/Fleet	Came in on 05/10 to find the front push bumper rubber was offset on one side like the push bumper had been used. The push bumper was loose. Only needs tightening. Verified with Cpl. Bolliger. The windshield washer fluid tank was filled completely at the beginning of the shift. Upon getting fuel at the end of shift, the tank was almost completely empty if not empty. The fluid was actively leaking on the ground underneath the tank. In addition, it is missing the cap. The tank needs to be replaced. Confirmed on Bodycam.	Completed	Taken to Bruce Lowrie
5/12/2023 14:05:43	Jared Quintero	The entire road of Wichita St all the way to the Freeway 20	Street Maintenance (including signs)	A lot of Pot holes	Completed	This is not our jurisdiction
5/13/2023 9:10:44	randy harris	Dispatch	Computer/IT	The new Utility5 wifi network has a weak signal and very low speeds less than 5mbps	In Progress	
5/14/2023 7:43:31	ERICA SOTO	SWITCH BOX FOR KEYBOARD AND MOUSE	Computer/IT	NEAR CONSOLE 6319	In Progress	
5/15/2023 12:13:27	Scott Dabbs	Corner of W Trammell and N Race St	Landscaping	The trees and shrubs at the city owned house, on the corner of W Trammell and N Race Street, are blocking view of the stop sign. You can't see the stop sign until you're almost on top of it.	Completed	
5/16/2023 13:26:50	Craig Spencer	Roy C Brooks	Street Maintenance (including signs)	Appears that a vehicle lost control, ran off the roadway, and ran over a speed limit sign.	Completed	6/14/23
5/20/2023 21:18:51	SGT J. THOMPSON	PITTMAN BASKETBALL COURT	BASKETBALL COURT LIGHTS	BASKETBALL COURT LIGHTS DO NOT COME ON AT NIGHT	Completed	
5/24/2023 13:44:38	Jared Quintero	433 Chambers Creek Dr	Street Maintenance (including signs)	Tree branch about to fall to the street, the branch is soo low that the firetruck would not go thru	Completed	
5/25/2023 10:36:04	Jared Quintero	700 block Heathcliff	Street Maintenance (including signs)	Tree branches are covering the street light, making it difficult to know if it is green or red.	Completed	Completed 723 and 717 Heathcliff whice was the worse ones. Everything else was decent. If I missed something let me know to take care of it.
5/26/2023 20:40:27	L. RAPER 716	JAIL CELL PHONES	Computer/IT	Jailers have sent over an email stating that 2 of the male jail cell phones are not working. Cell 53 and Seg 103.	In Progress	
5/27/2023 19:14:23	Erica Soto	MONITOR 4 CONSOLE 6319	Computer/IT	MONITOR 4 CONSOLE- BLACK SCREEN	In Progress	
5/28/2023 6:59:20	Randy Harris	Dispatch	Computer/IT	A Pos 4 CAD monitor is not connecting, leaving the CAD with only three functioning monitors	In Progress	
6/1/2023 12:43:18	Windy McGarrey	Police Department Sallyport	Building Maintenance	While outside I noticed a roller on the ground from the west sallyport door. I looked up and noticed one of the hinges broke in half. The door may cave in.	In Progress	
6/2/2023 7:02:54	Windy McGarrey	Police Department	Building Maintenance	The air conditioner is not working in the main building nor the jail.	Completed	Ac Company went out and repaired
6/2/2023 9:01:14	Jared Quintero	501 Georgetown Dr right in the ir	Street Maintenance (including signs)	Big hole in front of her house	Completed	7/11/23
6/2/2023 20:27:20	Ashley Bolliger	Pittman Park	Basketball courts	Lights at the basketball courts are going out.	Completed	
6/5/2023 7:07:37	Erica Soto	KUV SWITCH NEAR CONSOLE	Computer/IT	THE KUV SWITCH IS NOT RECOGNIZING ANY USB CONNECTED. KEYBOARD/MOUSE NOT WORKING.	In Progress	
6/5/2023 11:42:24	Jared Quintero	405 and 401 Christie Ave	Street Maintenance (including signs)	Street cracked and sometimes there is water visible	Completed	Have investigated no water leak
6/5/2023 19:53:03	Laura L Lopez	Communications POS4	Computer/IT	Epson scanner not connecting again. Made several attempts at correcting the problem unsuccessfully. PDF files still closing out on working computer. Unable to bring up a PDF file and read it. I can PRINT them if I'm fast enough, but the box comes up wanting me log on to my Adobe account in which I have none and will not be purchasing said program for my personal use. Several attempts with City Manager/Chief Spencer upon first submitting request were also unsuccessful. Switcher for TLETS / Working Computer is no longer working again.	In Progress	
1/29/2023 0:28:39	Jon Dezaruba	Fire Department	Computer/IT	Printers in day room not printing, IT issue.	Completed	
2/15/2023 2:40:53	TROY SCHRADER	PATROL 2 COMPUTER	Computer/IT	LOCAL DISC MEMORY IS FULL. PROBLEMS WITH LOOKING AT ATTACHMENTS FROM EMAILS DUE TO IT.	Completed	

3/11/2023 17:00:54	TROY SCHRADER	#126	Vehicle/Fleet	BATTERY FOR IN CAR MIC DOESN'T LAST AS LONG AND IS MISSING CLIP.	Completed	Belt clip replaced.
3/29/2023 15:02:17	WINDY MCGARREY	Mens Restroom	Building Maintenance	The men's bathroom sink near patrol is leaking water onto the floor. There is a large puddle there.	Completed	
4/3/2023 19:05:38	Pender #271	Patrol Unit 127 - Police Department	Vehicle/Fleet	Brakes squealing/grinding, Ignition coil misfire (check engine light)	Completed	Brakes replaced and no codes were found. back in service-190
4/27/2023 15:39:58	Ofc. Bobby Pender #271	Unit #122	Vehicle/Fleet	Take down emergency equipment flickering when activated	Completed	Issue would not replicate with siddons tech
5/1/2023 9:01:52	Irene Medina	517 edna ct	Street Maintenance (including signs)	pot holes on edna ct in front of 517 edna ct	Completed	5/26/23
5/10/2023 11:35:11	Jared Quintero	Shelby Dr and Forest Hill Dr	Street Maintenance (including signs)	Pot holes making traffic in the intersection	Completed	5/26/23
5/24/2023 12:34:41	Tyler Peel	Everman Pkwy and S Race St	Street Maintenance (including signs)	Pothole	Completed	5/26/23
5/25/2023 12:25:58	Cynthia Newell	500 blk Edna Ct	Street Maintenance (including signs)	Residents complaining about pot holes all over Edna Ct	Completed	Took care of all the ones we saw. There is a few that may pop up soon if it keeps on raining.
1/28/2023	Gilbert Ramirez	Peppermill & Deer Creek Rd	Street Maintenance (including signs)	Pothole in the middle of the street	Completed	
3/11/2023 18:54:29	TROY SCHRADER	837 COURY AND CHRISTPOHER	Street Maintenance (including signs)	LARGE POT HOLE	Completed	
3/23/2023 8:46:09	Jon Dezaruba	Fire Department	Computer/IT	Wifi continues to crash even after resetting router.	Completed	User error
4/4/2023 19:27:53	TROY SCHRADER	UNIT 126	Vehicle/Fleet	BRAKES STARTING TO SQUEEL CONSTANTLY. BELIEVE ITS TIME FOR NEW BRAKES.	Completed	Vehicle taken to Gault's and brake job completed.
4/28/2023 8:16:27	Resident	Kelly and Christie Ct	Street Maintenance (including signs)	Big hole, Pot holes	Completed	
3/11/2023 18:41:40	TROY SCHRADER	516 EDNA CT	Street Maintenance (including signs)	MULTIPLE SMALL, MED, LARGE POT HOLES IN ROADWAY.	Completed	Actually the multiple Small potholes are at 500 EdnaCt and Celeste St, those are done, the one
4/14/2023 21:38:01	L Lopez	Jailer Office / Old Dispatch	Building Maintenance	Jailer came into dispatch advising that the office was unusually hot. Said the thermostat in hallway set on 68, yet the temperature was showing 75 degrees in hallway.	Completed	Ac Company inspected the system low on freon has been fixed
4/15/2023 10:35:48	Windy McGarrey	Air Conditioner - Main Building	Building Maintenance	I don't believe the air conditioning is working in the main building. It is warm out there. The thermostat is set at 68 since yesterday but reads to be 74 in the building.	Completed	Ac Company inspected the system low on freon has been fixed
3/24/2023 10:07:20	ESOTO 717	PD BACK DOOR NEAR PATROL ROOM	Building Maintenance	PD BACK DOOR NOT CLOSING SINCE LAST NIGHT 3/23/23 7PM	Completed	Has been checked found nothing wrong with the door
1/28/2023	Laurent Raper	Police Department	Building Maintenance	North Gate has not been closing since the cold weather week	Completed	Both gates can be open
2/3/2023 10:33:59	Craig Spencer	City Hall	Building Maintenance	The glass window on the south side of the council chambers has a large crack in it from the ice storm. There is also a window in Susanne's office that has a crack in it. Need to be replaced.	Completed	Has been accomplished 4/28/2023
2/24/2023 8:33:14	CARLOS VELASQUEZ	Shelby and Georgetown UNIT 123. FRONT PASSENGER SIDE OF THE VEHICLE	Street Maintenance (including signs)	Pothole	Completed	4/3/23
2/28/2023 8:42:05	ENRIQUE MORADO	THOMPSON AND HEATEHR	Vehicle/Fleet	Unit 123 has a noticeable leak under the passenger side of the vehicle. reddish/brown color liquid	Completed	Taken to Bruce Lowrie
3/7/2023 19:48:14	TROY SCHRADER	CHRISTIE CT & KELLEY	Street Maintenance (including signs)	MASSIVE POT HOLE IN INTERSECTION. LARGE, DEEP POT HOLE IN MIDDLE OF ROADWAY.	Completed	4/3/23
3/11/2023 18:37:18	TROY SCHRADER	500 EDNA CT	Street Maintenance (including signs)	TWO LARGE POT HOLES IN ROADWAY.	Completed	4/5/23
3/11/2023 18:40:31	TROY SCHRADER	COURY AT MICHAEL	Street Maintenance (including signs)	MULTIPLE MED/LRG POT HOLES.	Completed	4/13/23
3/11/2023 18:50:25	TROY SCHRADER	1101 COURY RD EVERMAN TX	Street Maintenance (including signs)	BIG POTHOLE ON STREETSIDE OF DRIVEWAY	Completed	4/5/23---2 Potholes
3/14/2023 14:10:46	BRENDA RODRIGUEZ				Completed	4/5/23
1/29/2023 16:49:21	Craig Spencer	Everman Police Department	Building Maintenance	There has been a significant amount of construction in the Police Department over the past year. As a result, there is a tremendous amount of dust and debris in the building. Would like to have all ducts professionally cleaned and filters replaced as soon as possible to limit the impact on employees.	Completed	C and S has been contacted they will give me a call.
3/11/2023 9:13:23	Randy Harris	Jail Office	Computer/IT	The camera system is not displaying for jail staff	Completed	Fixed by Spencer
3/17/2023 7:45:29	Windy McGarrey	PD	Computer/IT	Everman Pd Camera 15 shows to be disconnected.	Completed	Duplicate Report
3/19/2023 15:14:47	Randy Harris	PD Cameras	Computer/IT	The camera that looks towards the north gate is no longer working	Completed	Duplicate Report
1/29/2023 17:28:00	Craig Spencer	Dispatch	Computer/IT	Need ethernet cables ran from the old radio system (Telex) to Position 5 in order to hook-up the Telex radio console. This console is needed in order to activate the outdoor warning sirens and as a back-up radio position.	Completed	

2/5/2023 23:26:08	SGT J. Thompson	Unit 127	Vehicle/Fleet	The docking mount will not charge tablet. When you try and turn on the tablet you get the following error message. Alert! The AC power adapter wattage type cannot be determined. The battery may not charge. The system will adjust the performance to match the power available.	Completed	Vehicle is at Defender. They advised there was a loose pin and they had to order the part.
2/9/2023 19:05:30	C. Rhea # 258	Brazos Ticket Writers	Computer/IT	When issuing CTWs the Ticket writer populates White Settlement PD as the issuing agency and doesn't give any options to change it.	Completed	E-mail sent to Tyler Technologies.
2/12/2023 16:48:49	TROY SCHRADER	ROY C BROOKS	Street Maintenance (including signs)	40 MPH SIGN IN THE 600 BLK RCB, LETTERING AND NUMBERS ARE PEELING OFF.	Completed	3/15/23 Replaced both signs on the side of the new house construction side because both were peeling off.
2/27/2023 18:07:20	Doug Kilgore	1000 S Race	Street Maintenance (including signs)	Northbound school zone light inop.	Completed	3/15/23 Replaced New Assembly
2/6/2023 8:58:56	Susan Mackey	100 Blk N. Forest Hill Drive (southbound side)	Street Maintenance (including signs)	Large pothole - between doughnut shop & gas station. Very deep.	Completed	If is the one going southbound, and on the edge of the street to the right then its been taken care of.
2/10/2023 17:18:29	Roberto Alonzo	Unit 123	Vehicle/Fleet	passenger side light is out, as well as the light switch, when it's placed on auto the headlights don't come on, on unit 123	Completed	Headlight has been replaced.
1/28/2023	Mike Treppa	Pittman Park Ladies Room	Building Maintenance	UPON INSPECTING AND SECURING THE PARKS, I OBSERVED THE PITTMAN PARK LADIES RESTROOM HAD BEEN VIOLATED. BOTH TOILETS ARE PACKED WITH FECAL MATTER AND THE RR IS UNUSABLE IN IT'S CURRENT CONDITION. I LEFT THE RESTROOM LOCKED UNTIL THE MATTER CAN BE ADDRESSED BY THE APPROPRIATE PERSON.	Completed	Restroom is cleaned and ready to use. Finished on 2-7-23. Ready to be closed and open.
1/28/2023	Troy Schrader	Pittman Park Men's Bathroom	Building Maintenance	Sink inside men's bathroom was destroyed and the stall divider was also destroyed. Report was made, 22PD025730.	Completed	The sink has been replaced and is operational. Divider was fixed. Finished on 2-8-23. Ready to be closed and open everyday.
2/6/2023 9:00:20	Susan Mackey	Everman Public Library Parking Lot	Street Maintenance (including signs)	Parking stop is broken and pulled out into the parking space. It is located on the south side of the building.	Completed	2-9-23- Has been reposition to its correct location
2/6/2023 9:01:06	Craig Spencer	Everman Parkway (Eastbound) @ S. Race St	Street Maintenance (including signs)	Large pothole at the stop sign - main eastbound lane	Completed	2/7/23
2/6/2023 18:29:21	TROY SCHRADER	MEMORIAL PARK	PARKS	USAF AND EFD19 FLAGS WERE CONNECTED BY ONE LOOP. PULLY SYSTEMS FOR BOTH POLES FAILED/BROKE. FLAGS HAVE BEEN REMOVED TO BE STORED UNTIL THEY CAN BE PLACED ON FLAG POLES AGAIN. USAF IN SGT OFFICE, EFD AT FD.	Completed	2/10/23- Fixed broken pulley on Air Force flag pole, Fixed rope in Police Dept flag, Fixed pulley on the Fire Dept flag.
1/29/2023 0:22:45	Jon Dezaruba	Fire Department	Phone System	LT Office phone not work with day room phone still needing to be connected.	Completed	02/02 - Technician will be on site Friday morning to resolve. 01/30 - Reported to National Telesystems Support - Ticket #409368
1/28/2023	Mike Treppa	Georgetown & Peppermill	Street Maintenance (including signs)	OVERHANGING LIMBS FROM 420 GEORGETOWN, WERE CLIPPED BY A DELIVERY TRUCK GOING THROUGH THE INTERSECTION SB ON GEORGETOWN @ PEPPERMILL. THE LIMBS WERE PULLED OUT OF THE ROADWAY AND PLACED ALONG THE CURB AT THE INTERSECTION, UNTIL THEY CAN BE REMOVED BY THE CITY CREW.	Completed	1/3/23 It has been investigated, and there are no limbs on the curb. Someone has picked them up.
1/29/2023 14:55:52	TROY SCHRADER #260	UNIT 126	Computer/IT	AVL IS MOSTLY EITHER DOWN OR ATTEMPTING TO LOCATE. AVL HAS ME IN HOUSTON AT THE CRIMES HQ WHEN SEARCHING LOCATION. SOMETIMES ITLL WORK THEN STOP DURING THE SHIFT OR WEEK. MY AVL IS MOSTLY THE ONE THAT DOESNT WORK WHEN OTHER UNITS AVL DO. HAVE BEEN AN ISSUE FOR SOMETIME.	Completed	01/31 - Sgt. Thompson sent an e-mail to CRIMES advising that the AVL seemed to have corrected itself. Will advise CRIMES if any further issues arise. 01/29 - Forwarded to CRIMES Help Desk for solution.
1/28/2023	Colby Rhea	Unit 122	Vehicle/Fleet	Front Push bumper is extremely loose	Completed	Vehicle was taken to Gault's Auto Shop and fixed. Front Push bumper is no longer loose
1/28/2023	Colby Rhea	PD Unit 120	Computer/IT	Need an aircard for wifi and fuel card that can be assigned to this unit	Completed	Fuel Card Ordered 01/28 - New air cards have arrived and will be programmed this next week
1/28/2023	James Thompson	Police Department	Computer/IT	The WiFi at the PD is not working	Completed	Doug replaced the router
1/28/2023	James Thompson	Wichita & Enon	Street Maintenance (including signs)	The pole with the Do Not Enter & Left Turn Only signs was hit by a vehicle and knocked over.	Completed	Pole & Signs were replaced by Public Works.
1/28/2023	T. Schrader #260	Unit 126	Vehicle/Fleet	Unit 126 does not have a fuel card assigned.	Completed	Replacement card ordered 01/28
1/30/2023 16:19:33	Phillip Rogers	Fire station Kitchen gas Range	Gas stove	Needing two new igniters for stove	Completed	Ordered 1/30/22 A-shift to complete install
2/13/2023 7:10:21	Doug Kilgore	Laptop Unit 125	Computer/IT	CAL 7 won't open. I need ASAP to run reports	Completed	Put in contact with CRIMES
3/7/2023 11:14:50	BRENDA RODRIGUEZ	Pittman Park	Building Maintenance	Restroom at Pittman Park has been locked for a couple of days.	Completed	Got them unlocked. Open for public.

3/23/2023 15:40:56	Linda Sanders	Georgetown & Shelby Rd	Street Maintenance (including signs)	Large Pothole in the intersection that needs to be filled.	Completed	4/3/23
3/27/2023 7:07:55	Pender	Unit #123-Engine Compartment	Vehicle/Fleet	Driver-side motor mount going out. Confirmed with Power-brake method. Slapped bottom of hood.	Completed	At Bruce Lowrie. Replaced motor mount
3/27/2023 9:13:59	Brenda Rodriguez	KELLY ST AND CHRISTI CT	Street Maintenance (including signs)	HUGE POT HOLE PER RESIDENT	Completed	4/5/23
3/31/2023 14:00:21	BRENDA RODRIGUEZ	3713 COLUMBINE AND 3717 COLUMBINE	Street Maintenance (including signs)	BIG POT HOLE AND STREET SIGN NOT READABLE	Completed	4/3/23
4/3/2023 14:51:51	TROY SCHRADER	1000 S RACE ST	Street Maintenance (including signs)	NB SCHOOL ZONE INDICATOR FLASHING LIGHT DOESN'T FLASH DURING HOURS.	Completed	4/3/23. The school zone light switch was off, but made sure time was programmed correctly just to be on safe side.
4/4/2023 17:53:04	TROY SCHRADER	PITTMAN PARK WALKING TRAIL	P.W, PARKS.	BENCH SEAT IS DISCONNECTED FROM THE FRAME. BENCH IS LOCATED ON THE WICHITA SIDE NEXT TO THE DRIVEWAY FOR THE CIVIC CENTER.	Completed	4/5/23 Missing bolts, but already taken care of.
4/8/2023 15:58:11	TROY SCHRADER	TICKET WRITERS	Computer/IT	ATTEMPTED TO LOGIN WITH 2 DIFFERENT LOGINS, BOTH TIMES IT SAID INVALID USERNAME/PASSWORD. ATTEMPTED SEVERAL TIMES.	Completed	Officers are able to log in now. They needed to put in the correct info to log in.
4/13/2023 7:39:20	Kilgore	School zone light at Forest Hill and Columbine	Street Maintenance (including signs)	School zone lights on Forest Hill and Columbine are inop. At least during the morning hours	Completed	4/17/23
5/6/2023 15:58:33	Bobby Pender #271	Patrol unit #126	Vehicle/Fleet	Dashcam monitor needs to be remounted in unit. Windshield washer fluid tank needs to be replaced. Cap missing and not holding fluids correctly.	Completed	Dashcam mount fixed. Washer fluid cap has been replaced. Tank is fine and hold fluid.
5/20/2023 4:00:40	Bolliger #270	Unit #126	Vehicle/Fleet	Passenger side headlight is out.	Completed	Replaced
5/20/2023 4:02:11	Bolliger #270	Patrol body cameras	Computer/IT	Body cam #8 only shows to be booting in the doc. It does not appear on watchguard to checkout.	Completed	Reset camera. It is now showing in the VISTA dashboard
5/21/2023 15:37:08	randy harris	PD Sally Port	Building Maintenance	Considerable amount of ANTS on the east side of the sally port along the outside wall working their way into the sally port. I was able to spray what I could with household ant spray	Completed	Poured some Ant Killer on 5/23/23
6/7/2023 14:56:12	Jared Quintero	In the intersection of Peppermill &	Street Maintenance (including signs)	Big pot hole	Completed	7/11/23
6/8/2023 5:14:47	Laurent Raper	Forest Hill Public Works	Building Maintenance	I've received two calls in the past 3 months from the Forest Hill PB Supervisor stating there has been alarms going off, but we haven't responded. He said that the Alarm Comp. is supposed to contact dispatch when an alarm goes off. We haven't received anything.		
6/8/2023 15:29:51	Jared Quintero	in the intersection Southway and	Street Maintenance (including signs)	Hard to miss 4 inch holes that has a lot of water running in the road.	Completed	Did not see 4 in potholes
6/10/2023 17:27:03	WINDY MCGARREY	PD -- JAIL	Building Maintenance	The AC in the jail is still not working. I was just advised by the staff that it is very hot and not coming on.	Completed	Fixed on 6/12/23 Ac guy came over to check it out and it got taken care off. Came back on 6-15-23 because it had issues again.
6/10/2023 17:32:45	ERICA SOTO	KUV SWITCH NEAR CONSOLE	Computer/IT	THE KUV SWITCH IS NOT RECOGNIZING ANY USB CONNECTED. KEYBOARD/MOUSE NOT WORKING.		
6/14/2023 14:37:12	Abdiel Quintero	410 Holley St	Street Maintenance (including signs)	There is a tree branch near the road.	Completed	Owner has to take care of it.
6/15/2023 7:01:20	Justin Zacek	Jail	Building Maintenance	AC appears to not be working or keeping up. Last night the jail was very warm and humid.	Completed	
6/18/2023 16:50:15	TROY SCHRADER	126	Vehicle/Fleet	WASHER FLUID PUMPS MIGHT BE OUT, FLUID IS TOPPED OFF BUT NOTHING SHOOTS OUT TO THE FRONT OR REAR WINDOW.		
6/18/2023 16:51:15	TROY SCHRADER	126	Vehicle/Fleet	WIPER BLADES NEED TO BE REPLACED, REQUESTING TO ORDER OR BUY FROM AUTOSTORE. THEYRE CRACKED AND STARTING TO DRY ROT.	Completed	Wiper blades replaced
6/18/2023 18:25:56	TROY SCHRADER	S FH DR @ SHELBY	Street Maintenance (including signs)	STOP SIGN ON S FH DR AT INTERSECTION IS FALLING OFF POLE.	Completed	6/23/23
6/20/2023 11:51:33	Griffin	109 Buie	Street Maintenance (including signs)	Resident Mr. Griffin came in to complain about huge pothole. said he spoke to Ramirez	Completed	
6/21/2023 9:11:46	Abdiel Quintero	900 block marlene dr	Street Maintenance (including signs)	There's a lot of water in the street and there may be a water leak	Completed	
6/24/2023 16:37:52	Troy Schrader	Police Bike	Bikes	Kick stand is broken. Doesn't keep bike up, stand is bent forward.		
6/25/2023 18:36:47	Troy Schrader	Patrol Bike	Bicycle	Carrier rack, a locking nut/screw had fallen off while in use at Celebrate America. Rack rod is zip tied to prevent it from rubbing on tire.		

6/27/2023 12:58:13	William Glock	Police department, rear door	Building Maintenance	The back door no longer closes properly. In order for the door to latch, you either have push on the door or pull on the door for it to fully close. I'm not sure if the door closer needs to be adjusted, or if the door is catching on the door frame.	Completed	Double checked the door and seems to be working fine now, maybe is the building moving a bit when the ground shifts. 10/16/23
6/28/2023 7:14:27	Windy McGarrey	BELL AND RACE ST	Street Maintenance (including signs)	DO NOT ENTER SIGN HAS BEEN KNOCKED DOWN PER E221	Completed	7/5/23
6/28/2023 9:08:34	Jared Quintero	Corner block of 3752 Columbine	Street Maintenance (including signs)	The side of the road is caved in and there is no parking spaces nor space for cars to go thru		
6/28/2023 15:58:23	Abdiel Quintero	Ridge and Georgetown	Street Maintenance (including signs)	There is a leak on the street on the corner of Ridge and Georgetown.	Completed	Super minor lead, sometimes due to movement it causes leak and sometimes its dry.
6/29/2023 8:03:26	Jared Quintero	1001 Marlene, both sides of the	Street Maintenance (including signs)	There is water flowing from 1001, 1005, etc	Completed	
6/29/2023 14:25:51	Scott Dabbs	Southeast corner N. Race St at V	Street signage	Unknown person(s) knocked over the Do Not Enter street sign at the corner of N Race and W Bell St.	Completed	7/5/23
6/29/2023 14:27:43	Scot Dbbs	Computer	Computer/IT	Unable to access shared (Y) drive from my computer.		
6/30/2023 8:09:38	Jared Quintero	in the corner of Bluebell drive at	Street Maintenance (including signs)	Speed limit sign is in the ground due to someone running over it last night.	Completed	7/17/23
6/30/2023 15:57:13	Windy	dispatch	Computer/IT	The new computer set up at POS-5 has a monitor malfunctioning. It looks like it has starburst across the screen. The screen on the bottom right.		
7/1/2023 7:46:46	WINDY	forest hill dr near blue bell	Street Maintenance (including signs)	SPEED LIMIT SIGN DOWN	Completed	7/17/23
7/7/2023 2:50:39	ERICA SOTO	CAMERAS	Computer/IT	EVERMAN SECURITY CAMERAS ALL CAMERAS OUT FOR ABOUT 30 MINUTES. IT KEEPS SAYING IT WILL RECONNECT BUT THEN SAYS UNABLE TO CONNECT.		
7/7/2023 3:02:02	ERICA SOTO	CONSOLE ID 6320 MONITOR 3	Computer/IT	MONITOR 3 IS COMPLETELY BLACK		
7/8/2023 10:08:32	WINDY MCGARREY	DISPATCH	Computer/IT	The printer in dispatch is making a semi loud ringing noise when it is actively printing. Also just in case, we still can't scan.		
7/8/2023 16:01:07	C. Rhea	Patrol computer	Computer/IT	CPL Patton ad an issue downloading media via USB on the patrol computers. I am unable to login to Windows due to a password issue.		
7/8/2023 18:50:26	WINDY MCGARREY	police	Computer/IT	The cameras keep going out. when you go in to restart the system it says there is something going on with the files or hard drive. It may crash soon.		
7/10/2023 9:43:02	Scott Dabbs	Computer	Computer/IT	Need software install for Dymo Label Writer 550. Software already downloaded from site, but administrator required for install.		
7/10/2023 23:41:53	SGT J. THOMPSON	Wichita @ West exit for Civic Ce	Street Maintenance (including signs)	Stop sign at the west exit for the Civic Center has been knocked down.	Completed	7/17/23
7/11/2023 14:39:07	Abdiel Quintero	520 ANDENWOOD CT	Street Maintenance (including signs)	There's 2 big pot holes in front of the residents home.	Completed	7/27/23
7/13/2023 6:05:04	Officer B. Pender #271	Engine Compartment - Battery	Vehicle/Fleet	Battery is emitting a rotten egg smell which is generally associated with needing a battery replacement.		
7/13/2023 16:08:26	Abdiel Quintero	King St and Holley St	Street Maintenance (including signs)	There's a water leak in the corner of King and Holley St	Completed	
7/17/2023 22:46:51	SGT THOMPSON	Civic Center	Building Maintenance	Window on westside of building shattered.	Completed	Replaced
7/19/2023 22:53:31	Loy Raper #716	NW Ballroom door	Building Maintenance	NW Ballroom door is not entirely locking. Officers were able to open the door with ease after dispatch remotely locked it. CPL Bolliger #270 also mentioned there is a wasp nest next to the door as well.	Completed	
7/21/2023 22:03:55	ERICA SOTO	JAIL A/C NOT FUNCTIONING	Building Maintenance	JAIL ADVISED THAT THE A/C UNIT IS NOT WORKING AND ITS GETTING VERY HOT OUT THERE.	Completed	
7/22/2023 2:02:04	B Pender #271	Unit #127	Vehicle/Fleet	Check/Service Engine Light	Completed	Taken to C&A to have the check engine light checked.
7/25/2023 14:02:09	ENRIQUE MORADO	BACK PASSENGER AND FRONT	Vehicle/Fleet	BACK PASSENGER AND FRONT DRIVER TIRES REPLACED DUE TO NAIL DAMAGE.	Completed	Fixed
7/28/2023 8:20:51	Jared Quintero	In front of 624 Windsor St	Street Maintenance (including signs)	A tree branch fell off in the road.	Completed	
7/28/2023 10:44:48	Jared Quintero	Water Hydrant on the corner of F	Water Hydrant	The Water Hydrant is leaking a lot	Completed	08-06-23 11 A.M called in and took care of it.
7/31/2023 15:48:56	721 vaughn ave	vaughn and floyd	Street Maintenance (including signs)	pothole in front of the property	Completed	9/19/23
8/2/2023 13:04:36	Al Brooks	PD	Building Maintenance	Gate latch on west side of PD is broken	Completed	
8/2/2023 18:23:03	R. Alonzo #221	Police Patrol Unit #123	Vehicle/Fleet	Brakes need maintenance. Starting to squeak.	Completed	Taken to Bruce Lowrie
8/2/2023 18:49:54	Al Brooks	PD	Building Maintenance	Gate latch on west side of PD is broken	Completed	
8/3/2023 11:52:19	resident	shelby and enon	Street Maintenance (including signs)	huge pot hole on enon and forest hill	Completed	8/17/23

8/7/2023 11:15:07	Jared Quintero	220 Buie Dr sidewalk	Street Maintenance (including signs)	The resident states the sidewalk in front of his yard has bumps and hills making big cracks and hard to walk thru there.		
8/8/2023 17:25:08	Troy Schrader	Unit 126	Vehicle/Fleet	Check engine light flash. Engine cylinder one misfire. Was confirmed by C & A inspection by OBD2 scanner.	Completed	Taken to Bruce Lowrie
8/9/2023 8:37:09	Jared Quintero	417 Chambers CK DR SO the st	Street Maintenance (including signs)	The resident stated there is a pot hole that is growing in the street in front of her driveway.	Completed	8/22/23
8/9/2023 12:33:06	Robinson	Animal control	Building Maintenance	Air conditioner leaking into hallway.	Completed	Unclogged the drain pan which was full and leaking, any Problems let us know.
8/10/2023 3:28:42	Jeremy Joiner	PD Kitchen	Building Maintenance	The water filters in the Dispatchers and Officers refrigerators need replaced, down to 3% life left. Part number is GE filter XWFE	Completed	8/24/23
8/14/2023 21:51:48	Troy Schrader	Unit #127	Vehicle/Fleet	Large coolant leak, leaked all of the coolant out of vehicle.	Completed	Taken to Bruce Lowrie
8/16/2023 12:39:06	Jared Quintero	Between Thompson St and Tran	Street Maintenance (including signs)	A tree branch fell in the side of the road, resident wants it to be removed.	Completed	8/17/23
8/19/2023 18:09:16	LAURENT RAPER	CIVIC CENTER - MOTION DETE	Computer/IT	LOW BATTERY DETECTION IN THE NORTH BALLROOM MOTION DETECTOR	Completed	8/21/23
8/22/2023 8:33:31	C. Rhea	119	Vehicle/Fleet	Back passenger tire flat, changed to spare.		
8/22/2023 9:39:45	Jared Quintero	Between Coury Rd and when yo	Street Maintenance (including signs)	There is a Pot Hole Between these streets very hard to not miss them.	Completed	10/31/23
8/22/2023 16:00:06	Troy Schrader	Unit 122	Vehicle/Fleet	AC was cam charged 08/21/23, took about 20 or so minutes to have cold air. Was cold for maybe several hours and then started to warm up. Air continued to be a warm/cool all the way till end of shift at 0300 at almost full at the lowest temp possible. 08/22/23, took approximately 10 minutes to cool down, does not push cold air but warm/cool air.	In Progress	At Bruce Lowrie
8/26/2023 0:03:37	LAURENT RAPER	NW BALLROOM DOOR	Building Maintenance	NW BALLROOM DOOR NOT SECURING AND SENSOR BROKEN	Completed	8/28/23- The Door lock secures, the sensor is being trigger by doors not being even caused by sun or building shifting, which is normal, they are about 1/8 to 1/4 offset, which with small movement will trigger motion sensors.
8/26/2023 6:19:37	A. Bolliger	Unit #127	Vehicle/Fleet	Front suspension is popping when turning the vehicle	Completed	Taken to Bruce Lowrie
8/29/2023 2:47:31	Randy Harris	Dispatch	Computer/IT	Position 3 CAD freezing up more and more, restart takes 5-10 minutes. Seems to freeze up more after midnight each night		
9/4/2023 10:29:44	Colby Rhea	Network	Computer/IT	Changed my password, but something went work and it doesn't recognize my new or old password now. Can you reset it ASAP please!		
9/11/2023 16:29:31	Abdiel Quintero	509 Holley ST	Street Maintenance (including signs)	There is water flowing in the street in front of 509 Holley St	Completed	
9/13/2023 14:27:48	Colby Rhea	119 laptop	Computer/IT	NetMobility is not installed on my laptop after Windows re-installed		
9/13/2023 22:08:22	Jon Dezaruba	Fire Department	Computer/IT	Internet LAN connection not working in dayroom under table or wall under projector.		
9/14/2023 9:42:11	Jared Quintero	In the corner of Deer creek and	Street Maintenance (including signs)	There are several pot holes that are making traffic due to trying to avoid it. It gets worse when it rains, because it fills up with water	Completed	10/19/23
9/15/2023 10:09:46	Jared Quintero	In the corner of Michael Dr and F	Huge piece of metal on the road	There is a huge piece of metal that may give a flat tire to a car, a neighbor put the broken metal piece to the side of the street.	Completed	9/19/23 - Did not see anything on the road, residents probably took care of it.
9/19/2023 11:22:02	Colby Rhea	Laptop for unit 119	Computer/IT	After updating Windows, I found that the application for NetMobility did not redownload. Due to this I have been unable to connect to the internet and complete reports on my assigned laptop.		
9/22/2023 9:56:50	Abdiel Quintero	Christopher and Marlene	Street Maintenance (including signs)	There's a big pot hole on Marlene and Christopher		
9/22/2023 14:25:22	Jared Quintero	404 Steeple Ridge Rd in front of	Street Maintenance (including signs)	There is a big pot hole in front of her house that accumulates water.	Completed	10/19/23
9/25/2023 11:26:15	Abdiel Quintero	Coury Rd and W Enon	Street Maintenance (including signs)	There's a plot hole on the corner of Coury Rd and W Enon Ave	Completed	10/31/23
9/25/2023 15:17:52	Jared Quintero	School zone in front of Roger E.	Street Maintenance (including signs)	The school zone is not working properly and many people are speeding in the elementary school zone	Completed	9/26/23
9/27/2023 2:03:04	Laura Lopez	Women's Public Restroom / PD	Building Maintenance	Strong smell of sewer	Completed	10/3/23
10/5/2023 14:06:02	Jared Quintero	The creek near 441 Christie Ave	possible flood	Mr. Binion, lives in 441 Christie Ave, wants someone to take a look at the creek because it is completely stopped by trash, it is a miracle the bridge didn't overflow.	Completed	11/1/23 Taken Care off.

10/6/2023 9:55:58	Jared Quintero	Christie Ave and S Race St	Creek	Another resident is complaining about all the debris the creek has. The resident doesn't want the bridge to over flow or flood their neighborhood.	Completed	11/1/23 Taken Care off.
10/6/2023 15:39:57	Jared Quintero	the 4 stop intersection of Shelby	Street Maintenance (including signs)	The grass is tall that you cannot see Stop sign	Completed	10-18-23, Checked, already Mowed
10/6/2023 22:03:09	LAURENT RAPER	CIVIC CENTER - NORTH AND	Building Maintenance	PER 271 PENDEER, THE NORTH AND WEST BALLROOM DOORS ARE NOT LOCKING	Completed	10/17/23, Looks like its working good.
10/10/2023 9:19:57	Jared Quintero	624 Windsor side walk	Street Maintenance (including signs)	A tree damaged the sidewalk on 624 Windsor Dr		
10/10/2023 11:39:17	LAURENT RAPER	DISPATCH TV-K	Computer/IT	FH CAMERAS FROZEN, KEYBOARD AND MOUSE NOT WORKING EITHER		
10/10/2023 11:40:07	LAURENT RAPER	FH AVL	Computer/IT	FH AVL IS FROZEN, NO CHANGE IN COLOR, PINGS, ETC.		
10/10/2023 19:33:45	Troy Schrader	Patrol Room.	Computer/IT	Patrol 2 computer has full disk space, cannot download files.		
10/11/2023 6:28:48	SGT J. Thompson #235	N. Forest Hill & Columbine	Street Maintenance (including signs)	School zone sign/pole knocked down. Needs to be replaced. Once replaced need to contact Oncor to restore power.		
10/12/2023 19:14:17	Tyler Peel	Jail	Computer/IT	Cameras for jail staff not working in their office		
10/19/2023 13:26:26	Jared Quintero	Creek on S race St and Christie	Street Maintenance (including signs)	A resident says there is debris and logs in the creek	Completed	11/1/23 Taken Care off.
10/20/2023 16:39:48	Jared Quintero	plymouth and Buie	Street Maintenance (including signs)	Pothole that will mess up someone's car tires		
10/23/2023 15:24:48	Troy Schrader	Unit #126	Vehicle/Fleet	Check Engine light is on, went to C & A Inspection at 107 Wichita, code was read and said it was "P0358 Ignition coil H primary/secondary circuit".		
10/25/2023 9:31:00	Enrique Morado	SRO Morado Laptop	Computer/IT	I can not login my laptop. However I can login on dell computers at the Police Department.		
10/26/2023 15:11:48	Jared Quintero	Everman PKWY turns to Shelby	Street Maintenance (including signs)	A resident complained about the patch that was done like 3 or 4 months back, that the patch is too high and you need to dodge it or drive super slow to go over it.	Completed	11/1/23 Checked, Not our Jurisdiction its Fort Worth.
10/28/2023 22:31:40	ERICA SOTO	EVERMAN CIVIC CENTER-NW	Building Maintenance	NW BALLROOM DOOR NOT SECURING/ MOTION SENSOR NOT WORKING PROPERLY.		
11/1/2023 10:53:58	Clifford Thrasher	Body cam	Computer/IT	None of the body cameras work correctly.		
11/6/2023 14:27:19	Jared Quintero	500 block down to the 600 block	Street Maintenance (including signs)	A very big pot hole, not hard to miss where it is		



STORMWATER MANAGEMENT PROGRAM

ANNUAL REPORT FORM

MCM: **Illicit Discharge Detection and Elimination**

BMP Title: **Source Investigation and Elimination**

Responsible Department: Public Works

Measurable Goal: Year 5 – Conduct 100% of illicit discharge inspections. Investigate 100% of illicit discharges reported.

1. Was the measurable goal accomplished for this permit year? Yes No
(a) If so, explain what was done to accomplish the measurable goal.

There was one illicit discharge reported in 2023 and it was also referred to the TCEQ. The issue occurred on August 17, 2023 and was resolved on September 1, 2023.

- (b) If not, why was the measurable goal not accomplished?

2. Was this BMP appropriate to meet the intended MCM(s)? Yes No
3. Was this BMP considered to be successful? Yes No
- (a) Please explain.

The BMP is considered partially successful. The City understands the importance for residents to be informed on how to respond to a spill or an illicit discharge. Reporting and acting when discharges happen can result in minimizing pollution to lakes and streams.

4. Are any changes to this BMP recommended for the next permit term? Yes No
- (a) If so, please explain.

5. Will a Notice of Change (NOC) be issued for this BMP? Yes No



(817) 293-0525 (Main)
(817) 551-9495 (Fax)
www.evermantx.us

CITY OF EVERMAN

212 N. Race St.
Everman, TX 76140

On August 17th of 2023 at 1:07 PM, a possible illicit discharge stormwater violation was notified by Rick Fuller. That same day, at 1:54 PM, the City of Everman investigated and reported this issue to TCEQ.

On August 30th of 2023, the City of Everman informed the business owner of “D & S Glass” that there was a spill on the street and it should be cleaned up immediately.

On September 1st of 2023, the owner addressed the situation and it was no longer an issue.

Before:



After:





STORMWATER MANAGEMENT PROGRAM

ANNUAL REPORT FORM

MCM: **Construction Site Stormwater Runoff Control**

BMP Title: **Erosion & Sediment Control Ordinance**

Responsible Department: Public Works

Measurable Goal: Year 5 – Inspect 100% of construction sites each year. Inspect 100% of complaints driven site each year.

1. Was the measurable goal accomplished for this permit year? Yes No
(a) If so, explain what was done to accomplish the measurable goal.

The City continues to enforce the construction erosion and sediment control ordinance. There has been no active construction of 1 acre or more in the City, and no reports were received.

- (b) If not, why was the measurable goal not accomplished?

2. Was this BMP appropriate to meet the intended MCM(s)? Yes No
3. Was this BMP considered to be successful? Yes No
(a) Please explain.

It is important for the City to be able to enforce the requirements for erosion and sediment control on construction sites. Proper stormwater practices on construction sites reduces the amount of pollution from site runoff.

4. Are any changes to this BMP recommended for the next permit term? Yes No
(a) If so, please explain.

5. Will a Notice of Change (NOC) be issued for this BMP? Yes No



STORMWATER MANAGEMENT PROGRAM

ANNUAL REPORT FORM

MCM: **Construction Site Stormwater Runoff Control**

BMP Title: **Construction Plan Review Procedures**

Responsible Department: Public Works

Measurable Goal: Year 5 – Administer the construction plan review process for 100% of new regulated construction projects.

1. Was the measurable goal accomplished for this permit year? Yes No
(a) If so, explain what was done to accomplish the measurable goal.

The City continues to enforce the construction erosion and sediment control ordinance. There were two developments exceeding 1 acre that were reviewed in accordance with the ordinances – 324 Thomas Place and Mesa Precast.

- (b) If not, why was the measurable goal not accomplished?

2. Was this BMP appropriate to meet the intended MCM(s)? Yes No
3. Was this BMP considered to be successful? Yes No
(a) Please explain.

It is important to ensure the City's erosion control plan review procedures are in compliance with the renewed TCEQ permit in order to prevent pollution.

4. Are any changes to this BMP recommended for the next permit term? Yes No
(a) If so, please explain.

5. Will a Notice of Change (NOC) be issued for this BMP? Yes No



STORMWATER MANAGEMENT PROGRAM

ANNUAL REPORT FORM

MCM: **Construction Site Stormwater Runoff Control**

BMP Title: **Construction Site Inspections and Enforcement**

Responsible Department: Public Works

Measurable Goal: Year 5 – Inspect 100% of construction sites each year. Inspect 100% of complaints driven site each year.

1. Was the measurable goal accomplished for this permit year? Yes No
(a) If so, explain what was done to accomplish the measurable goal.

There has been no active construction of 1 acre or more in the City for Year 5.

- (b) If not, why was the measurable goal not accomplished?

2. Was this BMP appropriate to meet the intended MCM(s)? Yes No
3. Was this BMP considered to be successful? Yes No
(a) Please explain.

Implementing the erosion and sediment controls prevent pollutants from entering storm drains and waterways.

4. Are any changes to this BMP recommended for the next permit term? Yes No
(a) If so, please explain.

5. Will a Notice of Change (NOC) be issued for this BMP? Yes No



Stormwater Pollution Prevention Plan Construction Site Inspection Report

<i>General Information</i>
Project Name:
Location:
Date of Inspection:
Developer:
Developer's Contact Information:
SWPPP Contractor/Inspector:
Inspector's Contact Information:
Describe present phase-activities of construction:
Type of Inspection: <input type="checkbox"/> Regular <input type="checkbox"/> Pre-storm event <input type="checkbox"/> During storm event <input type="checkbox"/> Post-storm event
<i>Weather Information</i>
Has there been a storm event since the last inspection? <input type="checkbox"/> Yes <input type="checkbox"/> No If yes, provide: Storm Start Date & Time: _____ Storm Duration (hrs): _____ Approximate Precipitation (in): _____
Weather at time of this inspection? <input type="checkbox"/> Clear <input type="checkbox"/> Cloudy <input type="checkbox"/> Rain <input type="checkbox"/> Sleet <input type="checkbox"/> Fog <input type="checkbox"/> Snowing <input type="checkbox"/> High Winds <input type="checkbox"/> Other: _____ Temperature: _____
Have any discharges occurred since the last inspection? <input type="checkbox"/> Yes <input type="checkbox"/> No If yes, describe: _____
Are there any discharges at the time of inspection? <input type="checkbox"/> Yes <input type="checkbox"/> No If yes, describe: _____

Overall Site Issues

BMP/Activity	Implemented?	Maintenance Required?	Corrective Action Needed & Notes (include location)
1. Have all disturbed areas requiring temporary or permanent stabilization been stabilized?	<input type="checkbox"/> Yes <input type="checkbox"/> No <input type="checkbox"/> N/A	<input type="checkbox"/> Yes <input type="checkbox"/> No	
2. Seeded? <input type="checkbox"/> Yes <input type="checkbox"/> No Mulched? <input type="checkbox"/> Yes <input type="checkbox"/> No Graveled? <input type="checkbox"/> Yes <input type="checkbox"/> No	<input type="checkbox"/> Yes <input type="checkbox"/> No <input type="checkbox"/> N/A	<input type="checkbox"/> Yes <input type="checkbox"/> No	
3. Are soil stock piles adequately stabilized with seeding and/or sediment trapping measures?	<input type="checkbox"/> Yes <input type="checkbox"/> No <input type="checkbox"/> N/A	<input type="checkbox"/> Yes <input type="checkbox"/> No	
4. Does permanent vegetation provide adequate stabilization?	<input type="checkbox"/> Yes <input type="checkbox"/> No <input type="checkbox"/> N/A	<input type="checkbox"/> Yes <input type="checkbox"/> No	
5. Have sediment trapping facilities been constructed as a first step in Land Disturbing Activities?	<input type="checkbox"/> Yes <input type="checkbox"/> No <input type="checkbox"/> N/A	<input type="checkbox"/> Yes <input type="checkbox"/> No	
6. For perimeter sediment trapping measures, are earthen structures stabilized?	<input type="checkbox"/> Yes <input type="checkbox"/> No <input type="checkbox"/> N/A	<input type="checkbox"/> Yes <input type="checkbox"/> No	
7. Are sediment basins installed where needed?	<input type="checkbox"/> Yes <input type="checkbox"/> No <input type="checkbox"/> N/A	<input type="checkbox"/> Yes <input type="checkbox"/> No	
8. Are finished cut and fill slopes adequately stabilized?	<input type="checkbox"/> Yes <input type="checkbox"/> No <input type="checkbox"/> N/A	<input type="checkbox"/> Yes <input type="checkbox"/> No	
9. Are on-site channels and outlets adequately stabilized?	<input type="checkbox"/> Yes <input type="checkbox"/> No <input type="checkbox"/> N/A	<input type="checkbox"/> Yes <input type="checkbox"/> No	
10. Do all operational storm sewer inlets have adequate inlet protection?	<input type="checkbox"/> Yes <input type="checkbox"/> No <input type="checkbox"/> N/A	<input type="checkbox"/> Yes <input type="checkbox"/> No	
11. Are stormwater conveyance channels adequately stabilized with channel lining and/or outlet protection?	<input type="checkbox"/> Yes <input type="checkbox"/> No <input type="checkbox"/> N/A	<input type="checkbox"/> Yes <input type="checkbox"/> No	

Overall Site Issues continued...

BMP/Activity	Implemented?	Maintenance Required?	Corrective Action Needed & Notes (include location)
12. Is in-stream construction conducted using measures to minimize channel damage?	<input type="checkbox"/> Yes <input type="checkbox"/> No <input type="checkbox"/> N/A	<input type="checkbox"/> Yes <input type="checkbox"/> No	
13. Are temporary stream crossings of non-erodible material installed where applicable?	<input type="checkbox"/> Yes <input type="checkbox"/> No <input type="checkbox"/> N/A	<input type="checkbox"/> Yes <input type="checkbox"/> No	
14. Is necessary restabilization on in-stream construction complete?	<input type="checkbox"/> Yes <input type="checkbox"/> No <input type="checkbox"/> N/A	<input type="checkbox"/> Yes <input type="checkbox"/> No	
15. Are utility trenches stabilized properly?	<input type="checkbox"/> Yes <input type="checkbox"/> No <input type="checkbox"/> N/A	<input type="checkbox"/> Yes <input type="checkbox"/> No	
16. Are soil and mud kept off public roadways at intersections with site access roads?	<input type="checkbox"/> Yes <input type="checkbox"/> No <input type="checkbox"/> N/A	<input type="checkbox"/> Yes <input type="checkbox"/> No	
17. Have all temporary control structures that are no longer needed been removed?	<input type="checkbox"/> Yes <input type="checkbox"/> No <input type="checkbox"/> N/A	<input type="checkbox"/> Yes <input type="checkbox"/> No	
18. Have all control structures repairs and sediment removal been performed?	<input type="checkbox"/> Yes <input type="checkbox"/> No <input type="checkbox"/> N/A	<input type="checkbox"/> Yes <input type="checkbox"/> No	
19. Are properties and waterways downstream from development adequately protected from Erosion and sediment deposition due to increases in peak stormwater runoff?	<input type="checkbox"/> Yes <input type="checkbox"/> No <input type="checkbox"/> N/A	<input type="checkbox"/> Yes <input type="checkbox"/> No	



STORMWATER MANAGEMENT PROGRAM

ANNUAL REPORT FORM

MCM: **Construction Site Stormwater Runoff Control**

BMP Title: **Construction Stormwater Training**

Responsible Department: Public Works

Measurable Goal: Year 5 – Conduct annual construction stormwater training at least once a year for designated City staff and new hires.

1. Was the measurable goal accomplished for this permit year? Yes No
(a) If so, explain what was done to accomplish the measurable goal.

(b) If not, why was the measurable goal not accomplished?

The City of Everman did not conduct construction stormwater training for designated staff or new hires. The City will conduct construction stormwater training in Year 1 of the new permit and training tools have been provided to them to perform the training.

2. Was this BMP appropriate to meet the intended MCM(s)? Yes No
3. Was this BMP considered to be successful? Yes No
(a) Please explain.

City understands the importance of properly educating and training on construction stormwater to prevent stormwater pollution from active construction sites.

4. Are any changes to this BMP recommended for the next permit term? Yes No
(a) If so, please explain.

5. Will a Notice of Change (NOC) be issued for this BMP? Yes No



STORMWATER MANAGEMENT PROGRAM

ANNUAL REPORT FORM

MCM: **Post-Construction Stormwater Management in New Development and Redevelopment**

BMP Title: **Post-Construction Ordinance**

Responsible Department: Public Works

Measurable Goal: Year 5 – Investigate 100% of post-construction violations or complaints.

1. Was the measurable goal accomplished for this permit year? Yes No
(a) If so, explain what was done to accomplish the measurable goal.

The City continues to implement and enforce the post-construction ordinance. There have been no incidents to report.

- (b) If not, why was the measurable goal not accomplished?

2. Was this BMP appropriate to meet the intended MCM(s)? Yes No
3. Was this BMP considered to be successful? Yes No
(a) Please explain.

It is important the City be able to enforce the post-construction requirements for new development, and renewed development sites, so that stormwater pollutants are reduced for long term.

4. Are any changes to this BMP recommended for the next permit term? Yes No
(a) If so, please explain.

5. Will a Notice of Change (NOC) be issued for this BMP? Yes No



STORMWATER MANAGEMENT PROGRAM

ANNUAL REPORT FORM

MCM: **Post-Construction Stormwater Management in New Development and Redevelopment**

BMP Title: **Long-Term Maintenance of Post-Construction BMPs**

Responsible Department: Public Works

Measurable Goal: Year 5 – Implement maintenance plans for new owners or operators once post-construction BMPs is installed.

1. Was the measurable goal accomplished for this permit year? Yes No
(a) If so, explain what was done to accomplish the measurable goal.

The City has developed requirements for long-term maintenance and operations. The Hannah Ranch, Phase 4 development includes a large detention pond. The detention pond is within a pond easement on a private lot with a specific note for HOA ownership and maintenance.

- (b) If not, why was the measurable goal not accomplished?

2. Was this BMP appropriate to meet the intended MCM(s)? Yes No
3. Was this BMP considered to be successful? Yes No
(a) Please explain.

It is important to maintain long-term BMPs as per City criteria to ensure proper drainage and prevent stormwater pollution.

4. Are any changes to this BMP recommended for the next permit term? Yes No
(a) If so, please explain.

5. Will a Notice of Change (NOC) be issued for this BMP? Yes No



STORMWATER MANAGEMENT PROGRAM

ANNUAL REPORT FORM

MCM: **Pollution Prevention and Good Housekeeping for Municipal Operations**

BMP Title: **Facility and Stormwater Control Inventory**

Responsible Department: Public Works

Measurable Goal: Year 5 – Maintain an inventory of City-owned and operated facilities and stormwater controls and update as necessary.

1. Was the measurable goal accomplished for this permit year? Yes No
(a) If so, explain what was done to accomplish the measurable goal.

The City has prepared an inventory of City-owned and operated facilities in the MS4. The facilities list includes, parks, maintenance shops, fire departments, and more.

- (b) If not, why was the measurable goal not accomplished?

2. Was this BMP appropriate to meet the intended MCM(s)? Yes No
3. Was this BMP considered to be successful? Yes No
(a) Please explain.

Preparing and maintaining an inventory of City-owned facilities tracks possible sources or pollutants within the MS4.

4. Are any changes to this BMP recommended for the next permit term? Yes No
(a) If so, please explain.

5. Will a Notice of Change (NOC) be issued for this BMP? Yes No



City of Everman

Facility and Stormwater Control Inventory

Parks

Maintenance Shop

Fire Department

Police Department

Library

Shelby Well Lots

Animal Shelter

Annex/City Hall

PD Well Lot

High School Well Lot

Elevated Tank Site

Splash Pad



STORMWATER MANAGEMENT PROGRAM

ANNUAL REPORT FORM

MCM: **Pollution Prevention and Good Housekeeping for Municipal Operations**

BMP Title: **Municipal Employee Training Program**

Responsible Department: Public Works

Measurable Goal: Year 5 – Provide annual municipal employee training at least once a year for designated staff and new hires.

1. Was the measurable goal accomplished for this permit year? Yes No
(a) If so, explain what was done to accomplish the measurable goal.

Partially addressed. There are components of Good Housekeeping Training in the IDDE training. More detailed Good Housekeeping Training will be provided in Year 1 of the new permit term.

- (b) If not, why was the measurable goal not accomplished?

See above.

2. Was this BMP appropriate to meet the intended MCM(s)? Yes No
3. Was this BMP considered to be successful? Yes No
(a) Please explain.

The City understands the importance of educating staff about pollution prevention and good housekeeping can reduce pollution and possible pollutants.

4. Are any changes to this BMP recommended for the next permit term? Yes No
(a) If so, please explain.

5. Will a Notice of Change (NOC) be issued for this BMP? Yes No



STORMWATER MANAGEMENT PROGRAM

ANNUAL REPORT FORM

MCM: **Pollution Prevention and Good Housekeeping for Municipal Operations**

BMP Title: **Contractors Requirements and Oversight**

Responsible Department: Public Works

Measurable Goal: Year 5 – Implement contract requirements to new contractors. Maintain contract with current contractors and revise as necessary.

1. Was the measurable goal accomplished for this permit year? Yes No

(a) If so, explain what was done to accomplish the measurable goal.

The City has contractual agreements in place for contractors to comply with the City's stormwater requirements. However, the City hires contractors for emergency maintenance only.

(b) If not, why was the measurable goal not accomplished?

2. Was this BMP appropriate to meet the intended MCM(s)? Yes No

3. Was this BMP considered to be successful? Yes No

(a) Please explain.

It is important to implement contractual requirements to ensure that contractors are using appropriate control measures and standard operating procedures when working within the MS4.

4. Are any changes to this BMP recommended for the next permit term? Yes No

(a) If so, please explain.

5. Will a Notice of Change (NOC) be issued for this BMP? Yes No



STORMWATER MANAGEMENT PROGRAM

ANNUAL REPORT FORM

MCM: **Pollution Prevention and Good Housekeeping for Municipal Operations**

BMP Title: ***Municipal Operation and Maintenance Activities***

Responsible Department: Public Works

Measurable Goal: Year 5 – Inspect 100% of municipal operations and facilities once a year.

1. Was the measurable goal accomplished for this permit year? Yes No
- (a) If so, explain what was done to accomplish the measurable goal.

(b) If not, why was the measurable goal not accomplished?

Unfortunately, the City did not conduct an assessment of municipal operations and facilities. They have developed a program for upcoming years which will be refined as part of Year 1 of the new permit term.

2. Was this BMP appropriate to meet the intended MCM(s)? Yes No
3. Was this BMP considered to be successful? Yes No
- (a) Please explain.

The BMP is considered unsuccessful because the City did not conduct inspections for municipal facilities or operations. The City understands the importance of developing pollution prevention measures for municipal O&M activities can reduce stormwater pollution within the MS4 facilities and maintenance.

4. Are any changes to this BMP recommended for the next permit term? Yes No
- (a) If so, please explain.

5. Will a Notice of Change (NOC) be issued for this BMP? Yes No